



*FX-2003-12XTDS in a BBX-1024XTR enclosure*

## Description

Mircom's FX-2003-12XTDS Intelligent Analog Fire Alarm Control Panel is designed to provide maximum flexibility of intelligent system requirements while also providing easy installation and operation at a cost-effective price.

The FX-2003-12XTDS base panel consists of one intelligent signaling line circuit (SLC) capable of supporting 99 intelligent sensors and 99 intelligent modules. In addition the base panel includes Four Class A/B (Style Z/Y) Notification Appliance Circuits rated at 1.7 Amps each, a large 4 x 20 back-lit alphanumeric LCD display and a 12 Amp power supply.

The FX-2003-12XTDS has provision to mount two programmable modules such as a RAX-1048TZDS LED annunciator, IPS-2424DS input switch module or an FDX-008 fan damper control module. In addition the FX-2003-12XTDS supports up to 9 adder modules such as the ALC-396S SLC loop adder module or SGM-1004A indicating circuit module.

The enclosure comes with a black backbox and is available with a beige or red door. A Fire Retardant Lexan window in the hinged door allows for viewing of the display and controls. The enclosure comes with a durable CAT-30 lock and key and space is provided for up to 17 AH Gel Cell batteries.

## Features

- One expandable to five Intelligent Signaling Line Circuits (SLC)
- Each SLC Loop is capable of supporting 99 Analog Sensors and 99 Addressable Modules which can be wired in Class A (Style 6 or 7) or Class B (Style 4)
- Four Class A/B (Style Z/Y) Notification Appliance Circuits rated at 1.7 Amps each
- Large 4 by 20 character Back-lit LCD Display with user friendly menu
- 12 Amp power supply
- Provision for two programmable modules and 9 internal adder modules
- Configurable for Two Stage operation
- Three level password protection with field programmable definition which enables the installer to determine what functions are accessible for each password level
- Panel Security to protect site configurations
- Manual Control Enable which allows password protection for all front panel function switches
- Correlatable Switch Inputs which allows for multi-functional outputs
- Four Alarm Queues with selector switches and LEDs for Alarm, Supervisory, Monitor and Trouble
- Auxiliary relay contacts for Common Alarm, Common Supervisory and Common Trouble
- RS-232 output for remote system printer or CRT
- Two Event History Logs comprised of a 1000 Alarm History Log for alarm related events and a 2000 Event Log for all events
- Front Panel Auto-Configure and/or Computer laptop Programmable
- Common Control switches and/or indicating LEDs for System Reset, Signal Silence, Fire Drill, Acknowledge, General Alarm, Lamp Test, A.C. On, Pre-Alarm and Ground Fault
- Built-in One Man Walk Test operation
- Configurable for Coded Operation
- Panel selection for UL or ULC requirements for smoke sensors (sensitivity) via computer laptop
- Capability to adjust Intelligent Smoke Detector sensitivity level

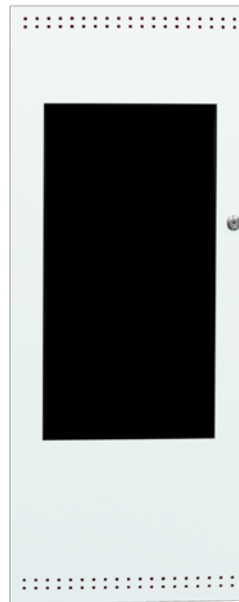


## FX-2003-12XTDS Standard Series Fire Alarm Control Panel



### FX-2003-12XTDS Expanded Main Control Unit

The FX-2003-12XTDS Expanded Main Control Unit comes complete with one intelligent signaling line circuit (99 Analog Sensors and 99 Addressable Modules), 4 Class A/B (Style Z/Y) Notification Appliance Circuits (1.7 Amps each), a 4 line by 20 character back-lit LCD display and a 12 Amp Power Supply which charges 17-55 AH batteries. The FX-2003-12XTDS has provision for two programmable modules and provides space for up to 9 adder modules. The FX-2003-12XTDS mounts in the BBX-1024XT(R) enclosure.



BBX-1024XT



BBX-1024XTR

### BBX-1024XT(R) Enclosure

The BBX-1024XT enclosure supports one FX-2003-12XTDS and up to 17 AH Batteries. The enclosure features the universal CAT-30 lock and a removable door for easy installation and servicing. The enclosure is available in a white (BBX-1024XT) or red exterior (BBX-1024XTR). The FA-XT-TRB Semi-Flush Trim Ring is required for semi-flush mounting.

**BBX-1024XT(R) Dimensions:** 35 1/2"H x 14 1/2"W x 5 1/4"D

## Adder Loop Controller Modules



### ALC-198S Single Analog Loop Controller Module

The ALC-198S Single Analog Loop Controller Module provides an additional analog loop to the FX-2000 consisting of 99 Analog Sensors and 99 Addressable Modules. The ALC-198S occupies one module slot in the FX-2003-12XTDS.



### ALC-396S Dual Analog Loop Controller Module

The ALC-396S Dual Analog Loop Controller Module provides two additional analog loops to the FX-2000 consisting of 99 Analog Sensors and 99 Addressable Modules per loop. The ALC-396S occupies one module slot in the FX-2003-12XTDS.



### ALC-H16 Hardwire Loop Controller Module

The ALC-H16 Hardwire Loop Controller Module allows the FX-2000 to support an additional sixteen (16) conventional hardwire adder modules. The hardwire modules consist of the DM-1008 Eight Initiating Circuit Module, SGM-1004 Four Indicating Circuit Module and the RM-1008 Eight Relay Circuit Module. The ALC-H16 occupies one module slot in the FX-2003-12XTDS.

## FX-2000 Standard Series System Maximums

- 500 Input Circuits
- 150 Output Circuits
- 5 Intelligent Addressable Loops
- 4 Remote LCD Annunciators
- 4 Main LED Annunciators
- 100 Manual Control Switches

## Adder Hardware Modules



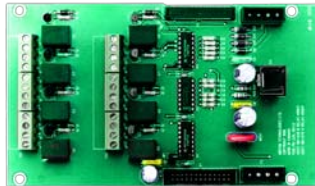
### DM-1008A Eight Initiating Circuit Module

The DM-1008A provides 8 Class B (Style B) or 4 Class A (Style D) Initiating Circuits configurable for Alarm, Supervisory or Trouble zones. The DM-1008A occupies one module slot in the FX-2003-12XTDS.



### SGM-1004A Four Indicating Circuit Module

The SGM-1004A provides 4 Class A/B (Style Z/Y) Notification Appliance Circuits configurable as Silenceable or Non-Silenceable. Each NAC circuit is rated at 1.7 Amps. The SGM-1004A occupies one module slot in the FX-2003-12XTDS.



### RM-1008A Eight Relay Circuit Module

The RM-1008A provides the FX-2003-12XTDS with eight individual configurable relays per module. Each relay provides one Form C contact rated at 28 VDC @1 Amp (resistive load) as well as a Green LED to indicate that the relay is active. The RM-1008A occupies one module slot in the FX-2003-12XTDS.

## Adder Auxiliary Modules



### UDACT-300A Digital Alarm Communicator Module

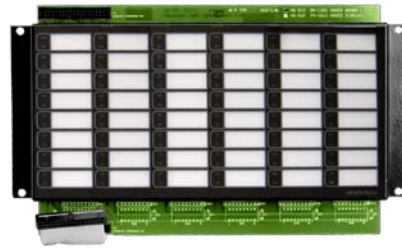
The UDACT-300A Digital Alarm Communicator Module allows the FX-2003-12N to transmit addressable point information to a central station. The UDACT-300A occupies one module slot in the FX-2003-12XTDS.



### PR-300 Polarity Reversal/City Tie Module

The PR-300 Polarity Reversal/City Tie Module provides the system with a supervised City Tie and Polarity Reversal connection. The PR-300 occupies one module slot in the FX-2003-12XTDS.

## Programmable Modules



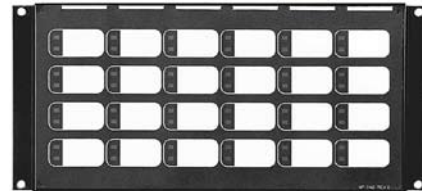
### RAX-1048TZDS Programmable LED Annunciator Module

The RAX-1048TZDS Programmable LED Annunciator Module provides 48 programmable bi-colored LEDs. The RAX-1048TZDS connects to the main panel or a RAX-LCD or RAM-1032TZDS when mounted remotely. The RAX-1048TZDS occupies one display position in the BBX-1024XT, BB-1000 or BB-5000 Series enclosures.



### FDX-008 Fan Damper Control Module

The FDX-008 Fan Damper Control Module provides individually programmed circuits which can be used for fan or damper control. The FDX-008 connects to the main panel or the RAX-LCD and occupies one display position in the BBX-1024XT, BB-1000 or BB-5000 Series enclosures.



### IPS-2424DS Programmable Input Switches Module

The IPS-2424DS provides 24 programmable switches that can be configured for ancillary functions such as zone bypass or added common control functions. The IPS-2424DS connects to main panel or the RAX-LCD when mounted remotely. The IPS-2424DS occupies one display position in the BBX-1024XT, BB-1000 or BB-5000 Series enclosures.

## FX-2003-12XTDS Electrical Specifications

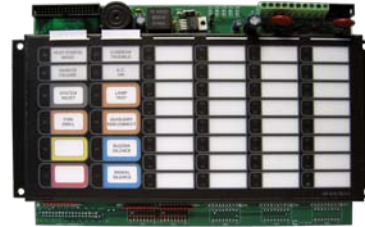
<b>AC Line Voltage</b>	120V 60Hz / 240V 50Hz 4 Amps. / 2 Amps. (primary)	
<b>Power Supply ratings</b>	12 Amps. Max. (secondary)	
<b>Indicating Circuits</b>	24VDC unfiltered 10 Amps. max.	
<b>Battery</b>	24VDC, Gel-Cell Lead-Acid	
<b>Charging Capability</b>	17-55 AH batteries	
<b>Current Consumption</b>	Standby	230 mA
	Alarm	380 mA

## Remote Annunciators



### RAX-LCD Remote LCD Annunciator

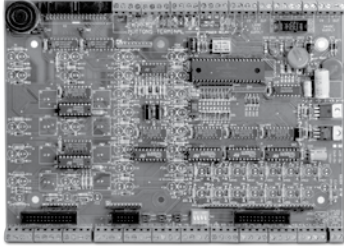
The RAX-LCD Remote LCD Annunciator provides the same functions as the main display on the fire alarm control panel. The RAX-LCD occupies one display position in the BB-1000 or BB-5000 Series enclosures.



### RAM-1032TZDS Main Remote LED Annunciator

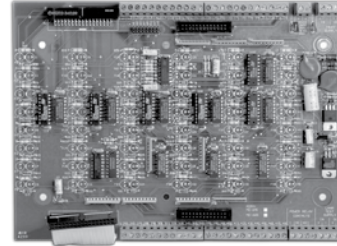
The RAM-1032TZDS Main Remote LED Annunciator provides common annunciator functions and 32 Bi-Coloured LEDs and 32 Trouble LEDs. The RAM-1032TZDS occupies one display position in the BB-1000 or BB-5000 enclosures.

## Graphic Annunciator Driver Modules



### MGD-32 Master Graphic Driver Module

The MGD-32 Master Graphic Driver Module provides common control inputs for the common control switches. The MGD-32 mounts in a graphic annunciator wallbox or in the BB-5000 enclosures. An external power supply required for incandescent lamps and lamp test.



### AGD-048 Adder Graphic Driver Module

The AGD-048 Adder Graphic Driver Module can be used with the MGD-32 to support an additional 48 supervised outputs. The AGD-048 mounts in a graphic annunciator wallbox or in the BB-5000 enclosures.

## Ordering Information

Model	Description
FX-2003-12XTDS	Expanded Main Control Unit c/w one Intelligent Signaling Line Circuit (SLC), 4x20 back-lit LCD display, 4 Class A/B (Style Z/Y) Notification Appliance Circuits and a 12 Amp power supply. Provides space for two programmable modules and 9 adder modules. Mounts in the BBX-1024XT(R) enclosure.
BBX-1024XT	Enclosure for FX-2003-12XTDS c/w removable white door, black backbox and CAT-30 lock and key. (Add suffix "R" for red door)
FA-XT-TRB	Black Semi-Flush Trim Ring for BBX-1024XT(R) enclosure.
<b>Adder Loop Controller Modules</b>	
ALC-198S	Single Loop Intelligent Analog Loop Controller Module (99 Analog Sensors and 99 Addressable Modules)
ALC-396S	Dual Loop Intelligent Analog Loop Controller Module (198 Analog Sensors and 198 Addressable Modules)
ALC-H16	Hardwire Loop Controller Module. Supports 16 Conventional Hardwired Modules.
<b>Adder Hardwire Modules</b>	
DM-1008A	Eight Class B (Style B) or 4 Class A (Style D) Initiating Circuit Module
SGM-1004A	Four Class A/B (Style Z/Y) Indicating Circuit Module (Rated at 1.7 Amps per circuit)
RM-1008A	Eight Relay Circuit Module c/w eight form C relays (Rated for 28 VDC @ 1 Amp max. per relay)
<b>Adder Auxiliary Modules</b>	
UDACT-300A	Digital Alarm Communicator Transmitter/Dialer Module
PR-300	Polarity Reversal and City Tie Module
<b>Programmable Modules</b>	
RAX-1048TZDS	Programmable Adder LED Annunciator Module c/w 48 bi-coloured LEDs and 48 Trouble LEDs
IPS-2424DS	Programmable Input Switches Module c/w 24 selector switches and 24 bi-coloured LEDs
FDX-008	Fan Damper Control Module c/w 8 programmable switches
<b>Remote Annunciators</b>	
RAX-LCD	Remote Shared Display LCD Annunciator c/w Display Queues and Common Controls.
RAM-1032TZDS	Main LED Annunciator Module c/w Common Control Features, Indicators and 32 Bi-Coloured LEDs and 32 Trouble LEDs
<b>Graphic Annunciator Driver Modules</b>	
MGD-32	Master Graphic Driver Module c/w Fire Alarm Common Control Switch Inputs and 32 Supervised Outputs
AGD-048	Adder Graphic Driver Module c/w 48 Supervised Outputs

NOT TO BE USED FOR INSTALLATION PURPOSES.



#### Canada

25 Interchange Way  
Vaughan, Ontario L4K 5W3  
Telephone: (905) 660-4655  
Fax: (905) 660-4113

#### U.S.A.

4575 Witmer Industrial Estates  
Niagara Falls, NY 14305  
Toll Free: (888) 660-4655  
Fax Toll Free: (888) 660-4113

Distributed by:

