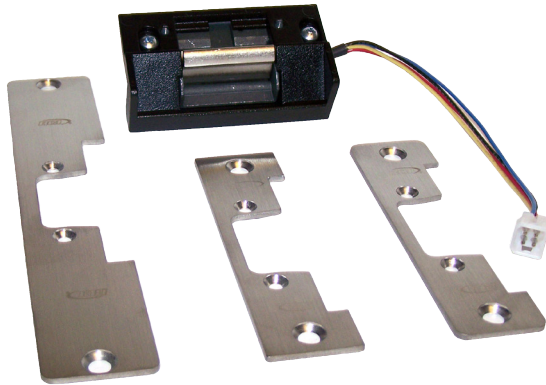


## S65U SERIES ELECTRIC STRIKE



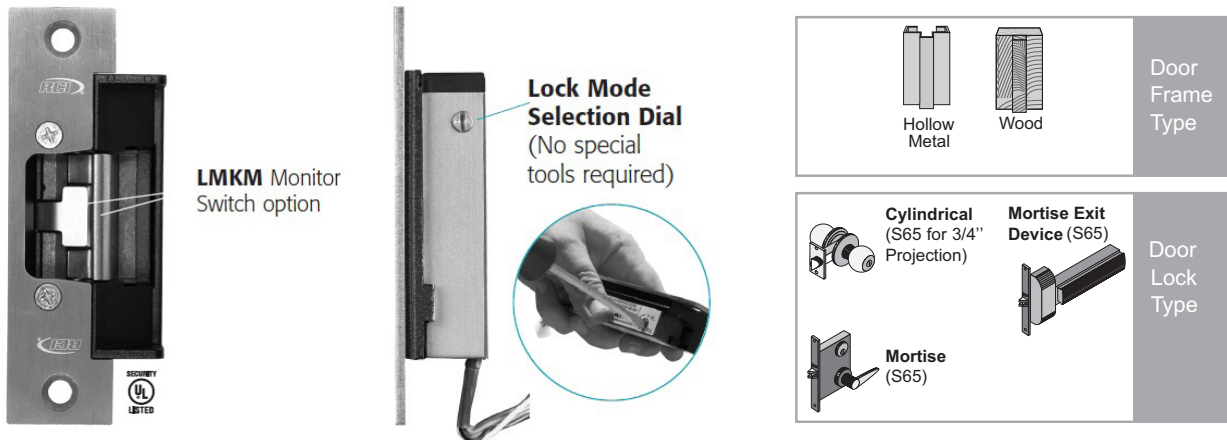
### Features

- All-in-One for hollow metal and wood frames.
- Field Selectable lock Mode: - Fail safe or Fail secure.
- Field Selectable Voltage
- UL1034 Burglary Resistant Listed
- UL Listed for 1,500 lbs static strength
- Plug-in wire connectors
- 3-Year Warranty
- Optional Latch Monitor/Keeper Monitor Status

### Description

The electric strike combines several key features such as; multi-voltage single solenoid, selectable lock mode (no tools required.), horizontal adjustment and plug-in wire connectors. The S65 is ideal when you require 3/4" latch projection.

The installations will be faster and easier and your inventory will be significantly less since one strike does it all; Cylindrical and Mortise



### Fail Unlocked

Rotate the adjustment screw so the dimple is fully rotated to the opposite the faceplate side of the strike (fully counter clockwise). Your strike is now fail unlocked and requires power to lock.

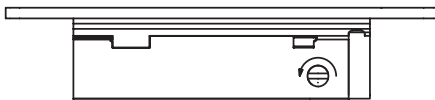


Fig. 1 Fail Unlocked = screw fully counter clockwise

### Fail locked

Rotate the adjustment screw so the dimple is fully rotated to the faceplate side of the strike (fully clockwise). Your strike is now fail locked and requires power to unlock the door.

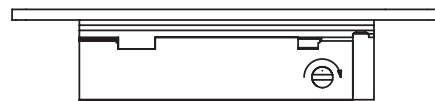
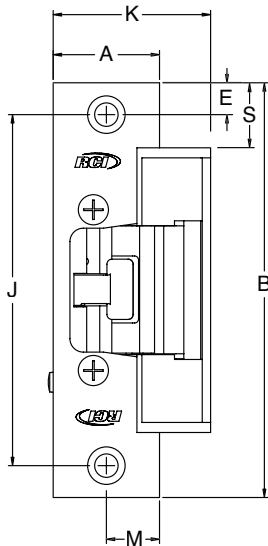


Fig. 2 Fail Locked = screw fully clockwise

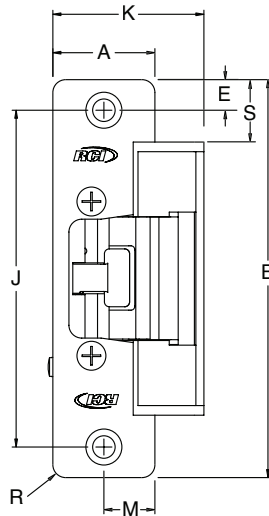
## Specifications



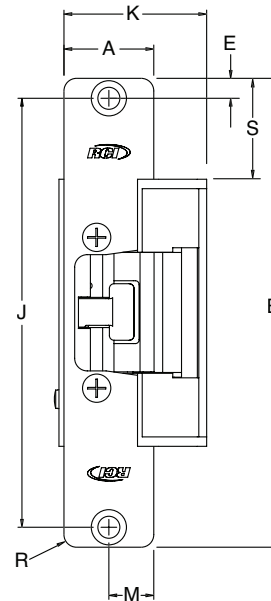
**S6514**  
(1-1/4"W x 4-7/8"H)  
Hollow Metal



**S6504**  
(1-1/4"W x 4-7/8"H)  
Aluminum



**S6505**  
(1-1/8"W x 5-7/8"H)  
Aluminum or Wood



PROFILE MEASUREMENT	S6514 INCHES	S6514 DECIMAL	S6514 METRIC (mm)	S6504 INCHES	S6504 DECIMAL	S6504 METRIC (mm)	S6505 INCHES	S6505 DECIMAL	S6505 METRIC (mm)
A	1-1/4	1.25	31.75	1-1/4	1.25	31.75	1-1/8	1.125	28.58
B	4-7/8	4.875	123.83	4-7/8	4.875	123.83	5-7/8	5.875	149.23
E	3/8	.375	9.53	3/8	.375	9.53	1/4	0.25	6.35
J	4-1/8	4.125	104.78	4-1/8	4.125	104.78	5-3/8	5.375	136.53
K	1-27/32	1.844	46.83	1-27/32	1.844	46.83	1-25/32	1.781	45.24
M	5/8	.625	15.88	5/8	.625	15.88	35/64	.547	13.89
R	—	—	—	5/32	0.156	3.97	5/32	0.156	3.97
S	49/64	.766	19.45	49/64	.766	19.45	1-17/64	1.266	32.15

# Installation

## Lip Bracket Adjustment

If your door or latch is out of adjustment, the insert can be adjusted forward or back as required for proper alignment to the latch. See Fig. 3

1. Remove the strike from the frame.
2. Remove the faceplate from the strike.
3. Two screws secure the lip bracket to the main insert
4. Loosen these screws approximately 1-1/2 to 2 full turns to allow the insert to move forward or backward as required.
5. Once the adjustment is made tighten all screws and reinstall the strike in the frame.

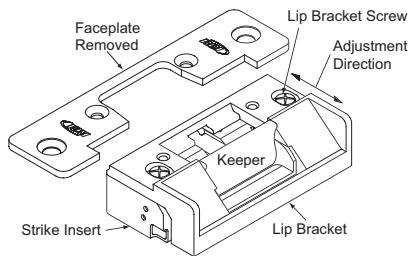


Fig. 3

Use 12VDC wire harness for 12VDC, 12-24VAC or 11-16VAC input power.

Use 24VDC wire harness for 24VDC input power only

Attach the red wire to (+) positive of the power supply. Attach the black wire to the (-) negative of the power supply (see Fig. 4). If using AC power, polarity is not observed.

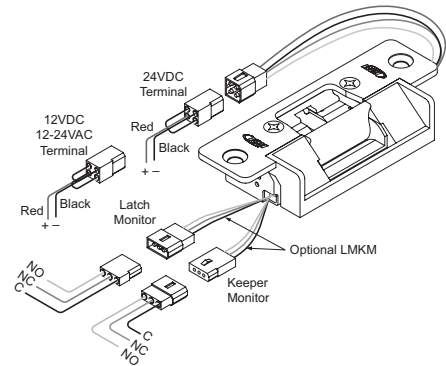


Fig. 4

Mode Field Selectable	Voltage Field Selectable	Duty	Sound	Amps*	Ohms†
FUL/FL	12VDC	Continuous	Silent	.375	37
FUL/FL	24VDC	Continuous	Silent	.190	148
FUL/FL	12 to 24VDC	Intermittent	Buzz	.280 - .565	37

Intermittent Duty = Energized less than 1 min. with Duty Ration 1:5, Continuous Duty = Energized 1 min. or more

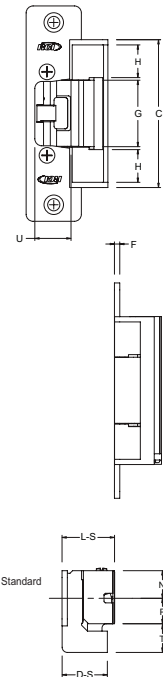
\*Ratings are based on maximum current draw at +10°C and include initial power-up current draw.

†Nominal resistance at +25°C ± 7% tolerance.

Profiles									
MEASUREMENT	C	D-S	F	G	H	L-S	N	P	
FRACTIONAL INCHES	3-11/32	1-5/32	1/8	37	47/64	1-3/16	5/8	37/64	
DECIMAL INCHES	3.344	1.156	.125	148	.734	1.188	.625	.578	
METRIC mm	84.93	29.37	3.18	37	18.65	30.16	11.88	14.68	

T MEASUREMENT	default	min	max
FRACTIONAL INCHES	21/32	1/2	49/64
DECIMAL INCHES	0.656	0.500	0.766
METRIC mm	16.67	12.70	19.45

T MEASUREMENT	default	min	max
FRACTIONAL INCHES	13/16	45/64	31/32
DECIMAL INCHES	0.813	0.703	0.969
METRIC mm	20.64	17.86	24.61



NOTE: Specifications are subject to change without notice. S6514 dimensions are listed as D-S and L-S

## Ordering Information

Model	Description
S65U	S6504/08/14 Universal Standard Door Strike, Profile 5/8" X 32D
S65ULMKM	S6504/08/14 LMKM Universal Door Strike, 5/8" X 32D with latch monitor

NOT TO BE USED FOR INSTALLATION PURPOSES.



**Canada**  
 25 Interchange Way  
 Vaughan, Ontario L4K 5W3  
 Telephone: (905) 660-4655  
 Fax: (905) 660-4113

**U.S.A.**  
 4575 Witmer Industrial Estates  
 Niagara Falls, NY 14305  
 Toll Free: (888) 660-4655  
 Fax Toll Free: (888) 660-4113

Distributed by:

Web page: <http://www.mircomgroup.com> Email: [mail@mircomgroup.com](mailto:mail@mircomgroup.com)



CAT. 7906  
 Rev 2

