

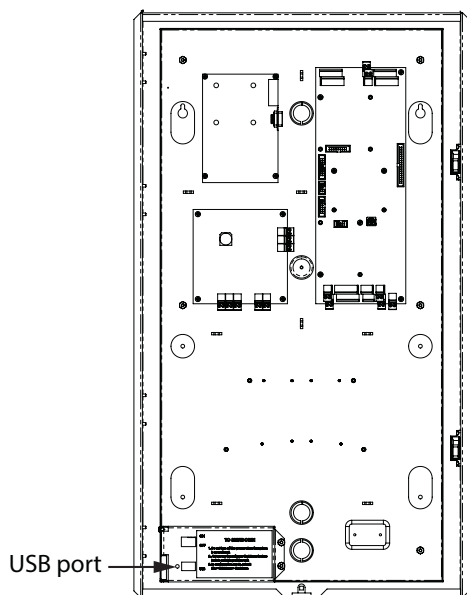
You need:

- USB flash drive
- USB mouse

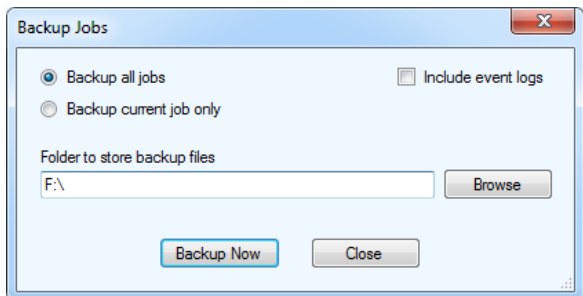
Back up the Job to the USB Flash Drive

NOTE: You do not need to back up or restore the job if you use the Configurator to send the job to the Touch using IP.

1. Insert the USB flash drive into the USB port.



2. From the main touch screen display enter **9999**.
The administrator access code window appears.
3. Enter the password to log in to the system and press **OK** (by default there is no password).
4. Select **File - Backup** from the Menu Bar. The **Backup Jobs** window appears.

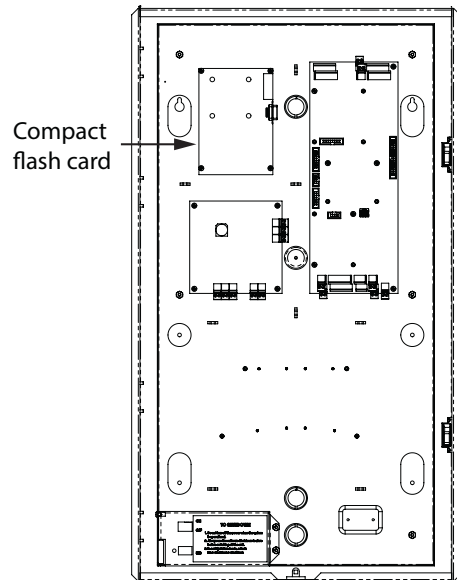


5. Select **Backup current job only**.
6. Click **Browse** and choose the USB flash drive as the location to store the backup files.
7. Click **Backup Now**.
8. Select **File - Shut Down - Shut Down** from the Menu Bar.

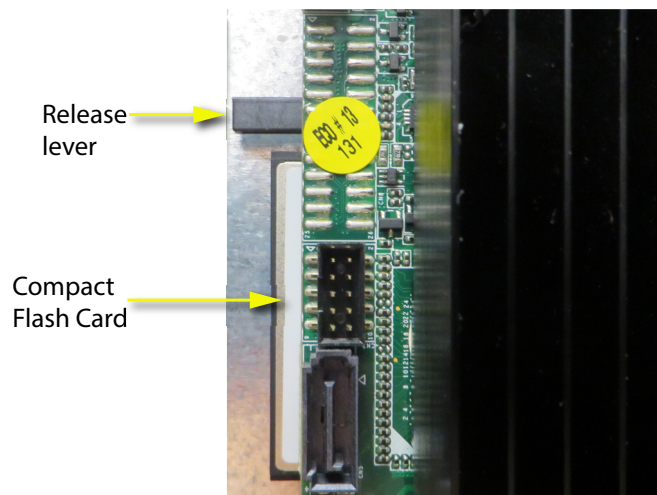
9. Click **Yes** to confirm.
- 10.If the Touch Screen has an on/off toggle switch, turn it off.
- 11.**Disconnect the power to the Touch Screen.**

Replace the Compact Flash Card

The compact flash card is on the left side of the PC board, which is in the top left corner of the inner chassis.



1. Press the black release lever to eject the compact flash card.



2. Insert the new card into the slot.

If the card has an arrow on the label, side with the arrow must face out and the arrow must point toward the slot.

If the card does not have an arrow on the label, slide the card into the slot with the logo up and the red stripe facing away from the slot as shown below.



This edge
first



This edge
first

The card should slide in easily and rest in the same location as the old card. Forcing the card can damage the equipment.

3. Start the Touch Screen.

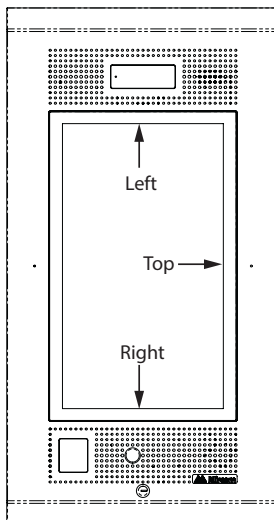
Configure the Display

1. Connect a USB mouse to the USB port.
2. If a message appears saying that you need to restart again, click Restart.

After the Touch Screen restarts fully, the display will be sideways and the mouse pointer will be invisible. The top of the screen is on the right.

3. Move the mouse straight towards the top of the screen, then double-click. This makes the mouse pointer appear on the screen.

Note: This step might take a few attempts. Do not move the mouse to the right; move it to the top as if the screen is oriented properly.



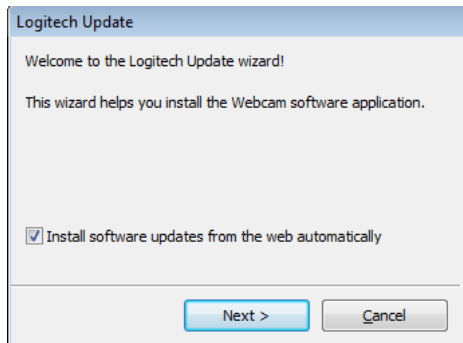
4. Use the mouse to enter **9999**.

The administrator access code window appears.

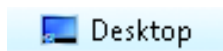
5. Enter the password to log in to the system and press **OK** (by default there is no password).
6. Select **File - Shut Down - Exit to Windows** from the Menu Bar.
7. Click **Yes**.

A **Logitech Update** window appears, but it is behind the Windows Explorer window.

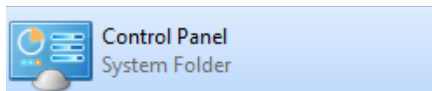
8. Click and drag the Windows Explorer window down to reveal the Logitech Update window.



9. Click **Next** in the Logitech Update window, and follow the instructions.
10. Click the Windows Explorer window, and then click the **Desktop** icon in the navigation pane of Windows Explorer.

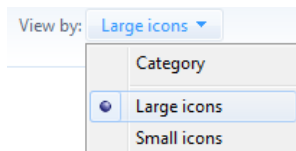


11. Click the **Control Panel** icon that has the words **System Folder** underneath it.



Note: There are two **Control Panel** icons. Click the one that says **System Folder**.

12. In the Control Panel window, click **Category** and select **Large Icons**.

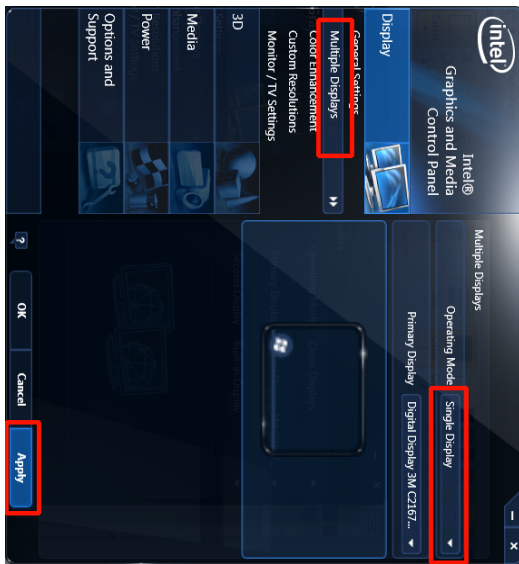


13. Click **Intel GMA Driver**.

The Intel control panel appears.

14. Select **Multiple Displays**, and then click the menu beside **Operating Mode** and select **Single Display**.

15. Click **Apply**, then click **OK**.



16. Select **General Settings**, and then click the menu beside **Rotation** and select **Rotate To 90 Degrees**.

17. Click **Apply**, then click **OK**.



The display rotates so that it is properly oriented.

18. Select **General Settings**, and then click the menu beside **Resolution** and select **1080 x 1920**.

19. Click **Apply**, then click **OK**.



20. Close the Intel control panel.
21. Click the Back button  twice to go back to the desktop.
22. Double-click the **Restart** icon.

Restore the Job from the USB Flash Drive

NOTE: You do not need to back up or restore the job if you use the Configurator to send the job to the Touch using IP.

1. When the Touch Screen restarts, from the main touch screen display enter **9999** and log in.
2. Insert the USB flash drive into the USB port.
3. Select **Disconnect** from the Menu Bar.
4. Select **File - Restore** from the Menu Bar.
5. Select the backup file to restore. Backup files have the **.t3** extension.
6. Click **Open** to restore the Job.
7. Click **Connect** on the Tool Bar, and verify that you are connected to the panel.

Copyright March 2017 Mircom Inc.

All rights reserved.

This manual, as well as the software described in it, is provided under licence or other agreements and may be used or copied only in accordance with the terms of such license. The content of this manual is furnished for informational use only. It is subject to change without notice, and should not be construed as a commitment by Mircom. Mircom assumes no responsibility or liability for any errors or inaccuracies that appear in this book.

Except as permitted by such license, no part of this publication may be reproduced, stored in a retrieval system, transmitted in any form by means electronic, mechanical, using any recorded media, or any other format without the prior written permission of Mircom.

ASSA ABLOY and Aperio are either registered trademarks or trademarks of ASSA ABLOY AB CORPORATION SWEDEN in the United States and/or other countries.

Microsoft, MS-DOS, Windows, and Windows XP/Vista/7 are either registered trademarks or trademarks of Microsoft Corporation in the United States and/or other countries.

Mircom
25 Interchange Way
Vaughan, Ontario
L4K 5W3
905.660.4655
Fax: 905.660.4113