

1.0 Connecting OpenGN to FleX-Net™



Attention: Before you begin, follow the instructions in LT-1113 “OpenGN Administrator’s Guide” to install OpenGN and configure the computer running OpenGN and the OpenGN Gateway.



Note: These instructions should be completed by someone familiar with configuring FleX-Net™. See LT-894, the FleXNet Installation and Operations Manual.

You need:

- Serial cable or USB cable
- UIMA cable
- Registered CodeMeter key for FleX-Net™
- MGC Fire Detection and Mass Notification Configurator version 11 or higher
- Ethernet cable (maximum 300')
- OpenGN version 3.2 or later and OpenGN Gateway version 3.2 or later
- OpenGN license key

1.1 Overview

To connect OpenGN to FleX-Net™, you must:

1. Connect the OpenGN Gateway to FleX-Net™
2. Configure FleX-Net™
3. Export the Job File
4. Import the Job File into OpenGN
5. Configure the OpenGN Gateway
6. Verify the Connection in the OpenGN Gateway

Follow the instructions below to complete these steps.

1.2 Connect the OpenGN Gateway to FleX-Net™

To connect the OpenGN Gateway to a FleX-Net™ Fire Alarm Control Panel through Ethernet:

1. Open the Fire Alarm Control Panel enclosure.
2. Open the Fire Alarm Control Panel chassis to access the FleX-Net™ main board.
3. Connect the Ethernet cable to the Ethernet port (P7) on the main board.

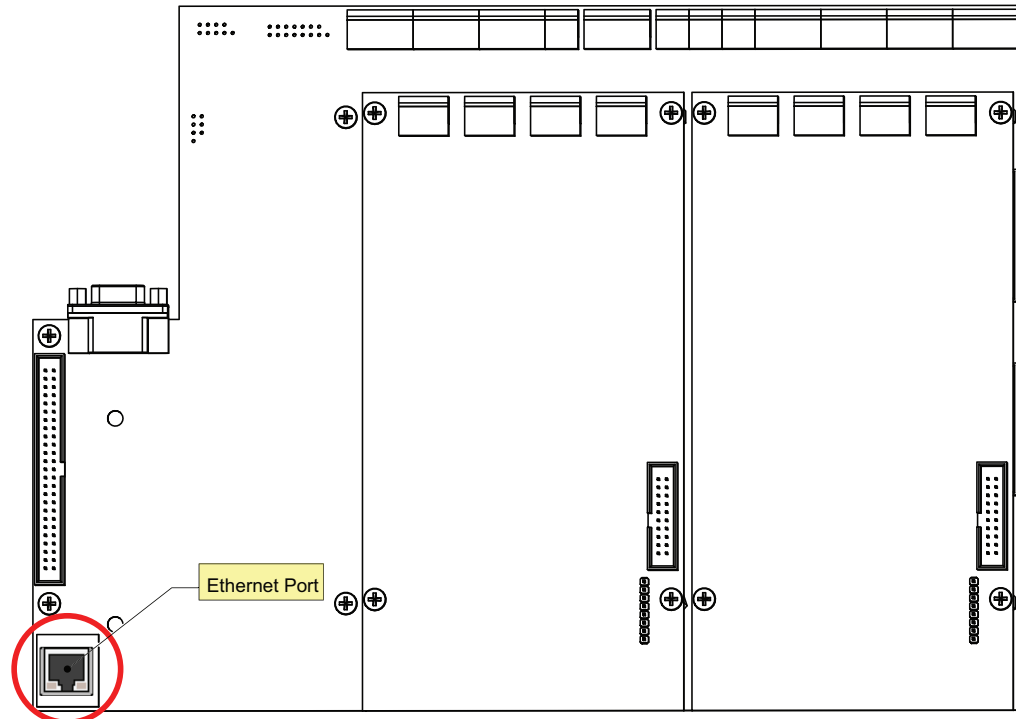


Figure 1 FleX-Net™ Main Board Ethernet Port (P7) Location

4. Connect the other end of the Ethernet cable to the network that the computer is connected to.

1.3 Configure FleX-Net™

The FleX-Net™ node that is connected to OpenGN must be configured so that it can communicate with the FleX-Net™ network.

1. Insert your CodeMeter key into the computer.

The CodeMeter icon in the Windows system tray (in the lower right-hand corner of the screen) turns blue.



Figure 2 Connected CodeMeter Key

If the CodeMeter key is not inserted, the icon is gray.



Figure 3 Disconnected CodeMeter Key

2. If you are using an RS-232 cable with a serial port to communicate between the panel that OpenGN will be connected to and the computer, then follow these steps:
 - a. Start the Configurator, and then click **File > User Preferences**.
 - b. In the **Serial Port** menu, click the port that the RS-232 uses to connect to the computer.
 - c. Click **OK**.
3. Connect the RS-232 cable or the USB cable to the UIMA cable.
4. Connect the 10-pin head of the UIMA cable to the last CPU in the CPU chain that starts from the main board.
5. Connect the other of the RS-232 cable or the USB cable to the computer.
6. Start the Configurator.
The Configurator prompts you for your PIN.
7. Type your 4 digit PIN.

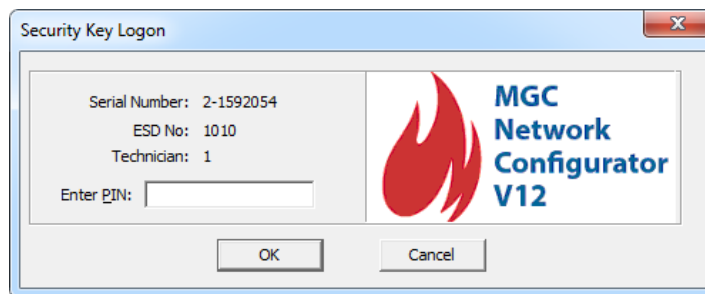


Figure 4 Security Key Logon

The Configurator opens.

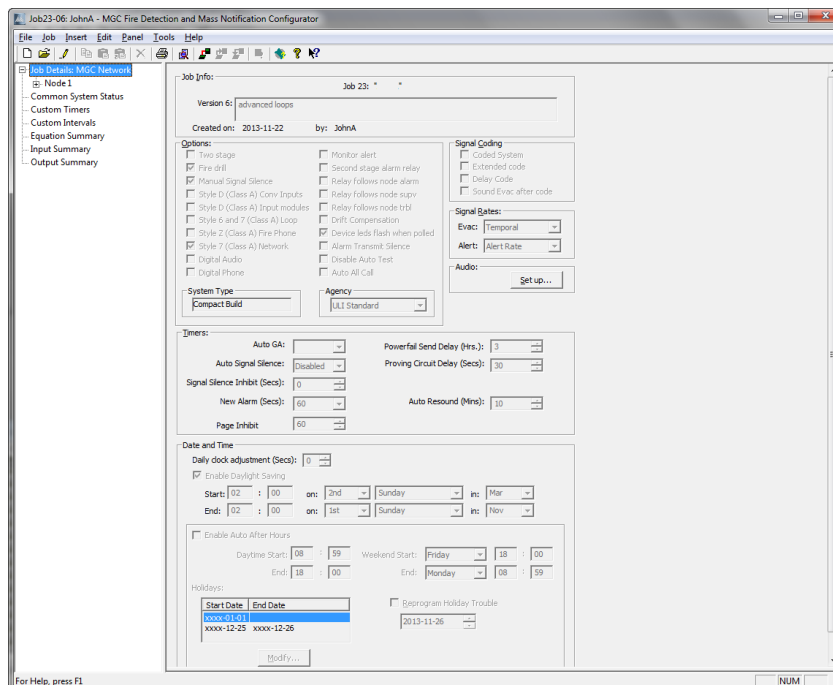


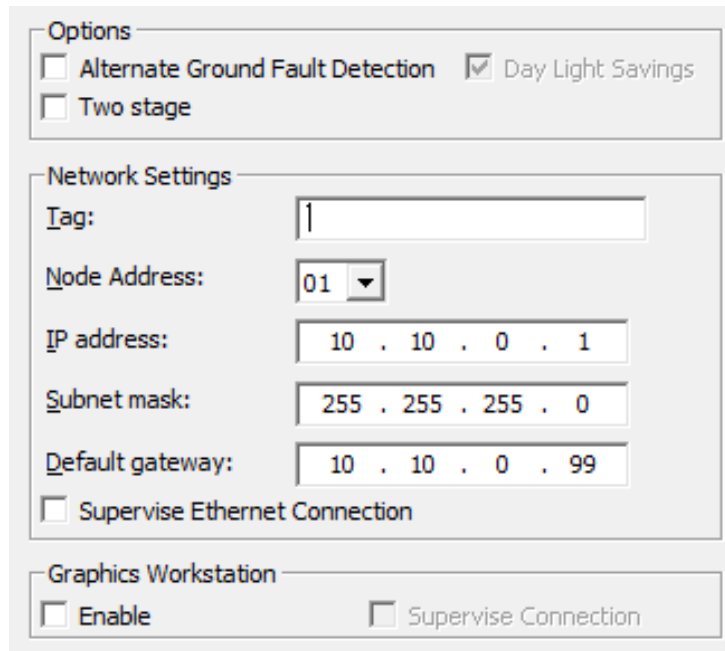
Figure 5 The Configurator

8. Click **Panel > Connect**.
9. Open the job for the installation of FleX-Net™ that will connect to OpenGN.
10. Click **Job > New Version**, and type a comment to describe the new version, for instance **OpenGN**.

The left side of the Configurator window lists the job as a tree.

11. Select the node that is connected to OpenGN.
The **Network Node Info** window appears on the right.
12. Type the static IP address, subnet mask, and gateway for the node. If you need assistance, contact your network administrator.
13. Select **Supervise Ethernet Connection**. If this option is selected, then FleX-Net™ reports a trouble when the Ethernet cable is disconnected.
14. Select **Enable** under **Graphics Workstation**. This option allows FleX-Net™ to communicate with the OpenGN Gateway.
15. Select **Supervise Connection** under **Graphics Workstation**. If this is selected, FleX-Net™ reports a loss of connection with OpenGN as a trouble on the annunciators.

You must do steps 13, 14 and 15 only on the node that is connected to OpenGN.



The screenshot shows a dialog box with three sections:

- Options:**
 - Alternate Ground Fault Detection
 - Day Light Savings
 - Two stage
- Network Settings:**
 - Tag:**
 - Node Address:**
 - IP address:**
 - Subnet mask:**
 - Default gateway:**
 - Supervise Ethernet Connection
- Graphics Workstation:**
 - Enable
 - Supervise Connection

Figure 6 Network Settings

16. Click **Job > Send Job**. Send the job to the node that OpenGN will be connected to.

1.4 Export the Job File

To export the job file from a FleX-Net™ panel

1. Start the Configurator.
2. Click **Job > Export Job**.

The **Export current job to a file** window appears.

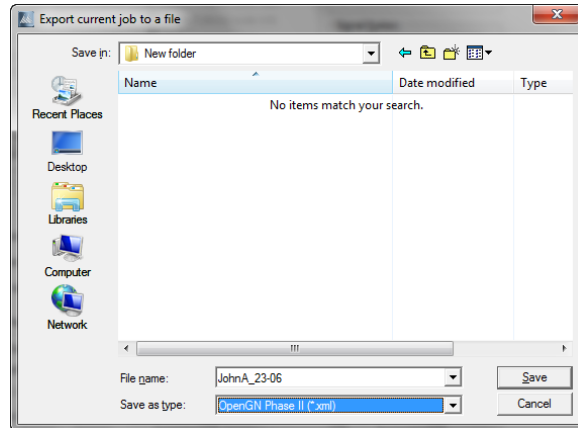


Figure 7 Export current job to a file

3. In the **Save as type** menu, click **OpenGN Phase II (*.xml)**, and then click **Save**.

1.5 Import the Job File into OpenGN

1. Transfer the job file you generated in section 1.4 to the computer that OpenGN is running on.
2. Insert the OpenGN CodeMeter license key in the computer.
3. Right-click the **Open Graphic Navigator** icon, then select **Run as Administrator**.

The Login window appears.

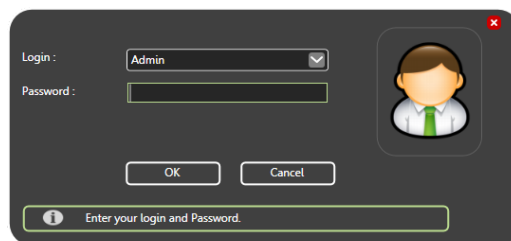


Figure 8 Login Window

4. Select the user from the **Login** menu.
5. Type the password.
6. Click **OK**.
The OpenGN Main Display window appears.
7. Click the **Config** button from the Main Display window.
8. Click **Yes** to confirm that you want to enter the configuration section.
The Configuration window appears.
9. Click the **Settings** button in the lower right-hand corner of the Configuration window.
The Main Program Settings window appears.

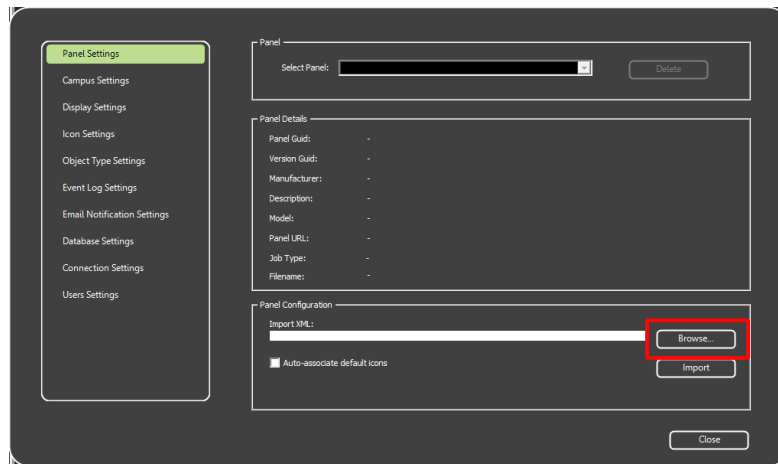


Figure 9 Panel Settings

10. Click **Browse** in the Panel Configuration section, and then navigate to the XML file.
11. Select **Auto-associate default icons** if you want to associate the object icons with the existing system icon images.



Note: If you are importing a new version of a previously imported job file, uncheck **Auto-associate default icons**. Otherwise, any custom icon settings you have made will be erased.

12. Click **Import XML**.
13. Click **Yes**.
14. Restart OpenGN.

1.6 Configure the OpenGN Gateway

1. Right-click the **Open Graphic Navigator Gateway** icon, then select **Run as Administrator**.

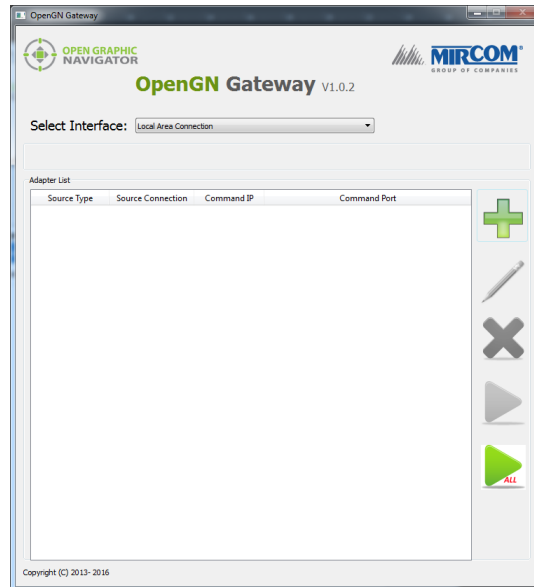



Figure 10 OpenGN Gateway

2. Click the **Select Interface** pulldown menu and select the interface that you are connecting with. If you are using an Ethernet cable, select **Local Area Connection**.
3. Click the + button. 

The Adapter Configuration window appears.

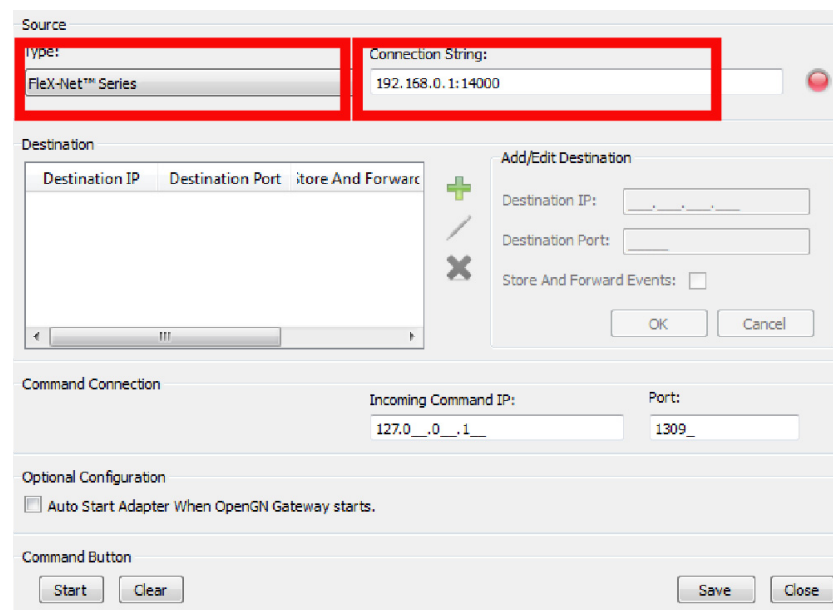



Figure 11 Adapter Configuration Window

4. Provide the following information:

- Type** **FleX-Net™ Series**
- Connection String** Type the IP address of the panel that the OpenGN Gateway is connected to, then a colon, then **14000**.
See section 3 on page 14 for instructions on how to get this information from the FleX-Net™ panel.
For example, if the IP address of the panel is 192.168.1.10, then type:
192.168.1.10:14000

5. Click the green button  beside Destination, and then provide the following information:

- Destination IP** The IP address of the OpenGN computer. If the OpenGN Gateway and OpenGN are on the same computer, use 127.0.0.1.
- Destination Port** **1209**
- Store and Forward Events** Reserved for future use.

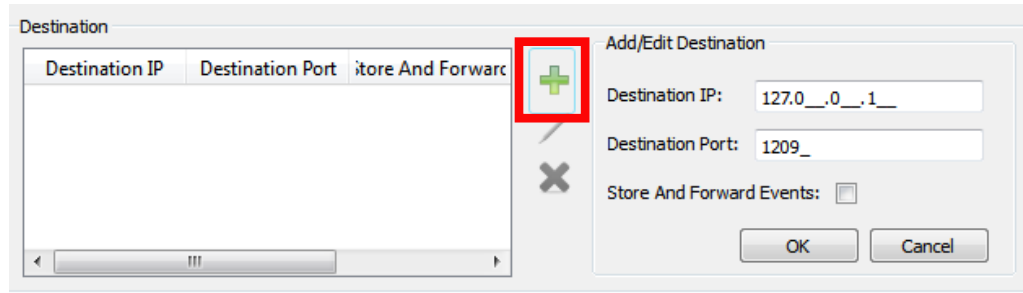


Figure 12 Destination

6. Click **OK**.

The Destination appears in the **Destination** field on the left.

7. Under **Command Connection**, provide the following information:

- Incoming Command IP** The IP address of the computer that the OpenGN Gateway is on. If the OpenGN Gateway and OpenGN are on the same computer, use 127.0.0.1.
- Port** **1309**. This must be a different port than the port listed above.

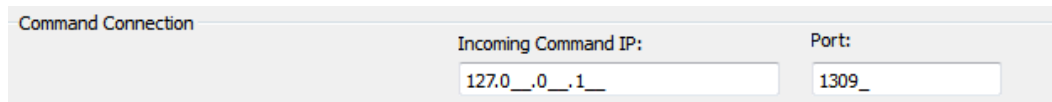


Figure 13 Command Connection

8. Click **Auto Start Adapter When OpenGN Gateway Starts** if you want the OpenGN Gateway to connect automatically with these settings when it starts.
9. Click **Save** at the bottom of the Adapter Configuration window.
10. In the Windows taskbar, right-click the **OpenGN Gateway** icon, and then select **Close window**.

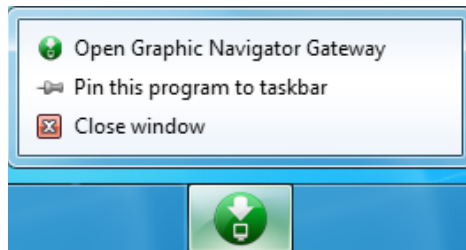



Figure 14 Close OpenGN Gateway

11. Restart the OpenGN Gateway: right-click the **Open Graphic Navigator Gateway** icon, then select **Run as Administrator**.

1.7 Verify the Connection in the OpenGN Gateway

1. If the OpenGN Gateway is not running, right-click the **Open Graphic Navigator Gateway** icon, then select **Run as Administrator**.
2. Select the adapter that you created earlier.
3. Click the green arrow icon: 

When OpenGN is connected, the adapter in the Adapter List is green.

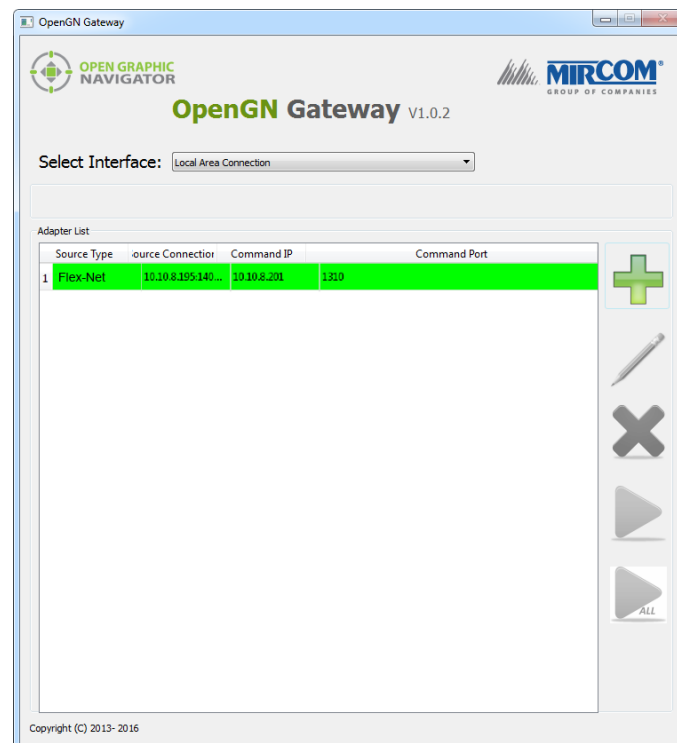


Figure 15 OpenGN Gateway with One Connection

4. Double-click the adapter to view its details.

When OpenGN Gateway is connected, the icon beside **Connection String** is green, and the Destination is green.

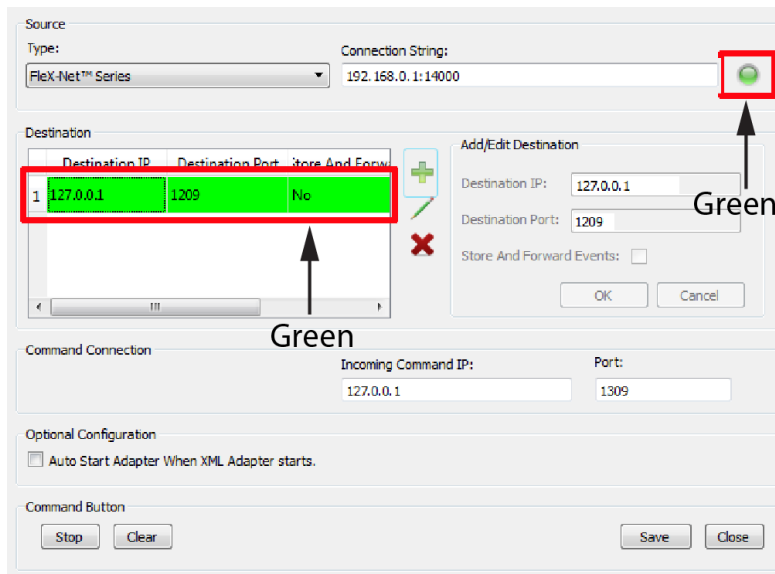


Figure 16 The OpenGN Gateway Showing a Connection

2.0 Updating the Job File for Flex-Net™

If the job on the Fire Alarm Control Panel changes, you must export the job file from the Configurator, and then import it into OpenGN again.

2.1 Exporting the Job File from the Configurator

In this step, you export the job file from the Configurator. In the next step you import it into OpenGN.

To export the job file

1. Start the Configurator.
2. Click **Job > Export Job**.

The **Export current job to a file** window appears.

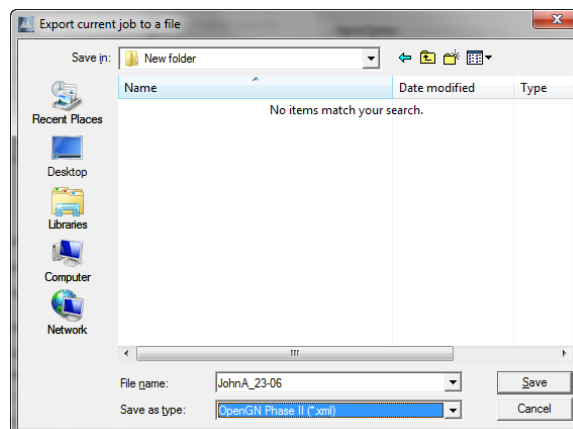


Figure 17 Export current job to a file

3. In the **Save as type** menu, click **OpenGN Phase II (*.xml)**, and then click **Save**.

2.2 Importing the Job File into OpenGN

After you have exported the job file, you must import it into OpenGN.

To import the job file

1. Transfer the job file you just saved to the computer that OpenGN is running on.
2. Insert the OpenGN CodeMeter license key in the computer.
3. Start OpenGN.

The Login window appears.

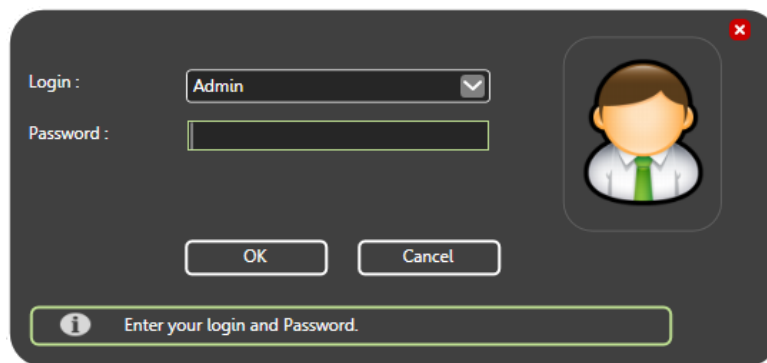


Figure 18 Login Window

4. Select the user from the **Login** menu.
5. Type the password.
6. Click **OK**.

The OpenGN Main Display window appears.

7. Click the **Config** button from the Main Display window. Click **Yes** to confirm that you want to enter the configuration section.

The Configuration window appears.

8. Click the **Settings** button in the lower right-hand corner of the Configuration window.

The Main Program Settings window appears.

9. Click the **Panel Settings** tab.

The Panel Settings window appears.

10. Click **Browse** in the Panel Configuration section, and then navigate to the job file.
11. Click **Import XML**.
12. If the job already exists, a window appears asking you if you want to update the stored version of the job with the one you are importing.
13. Click **Yes**.

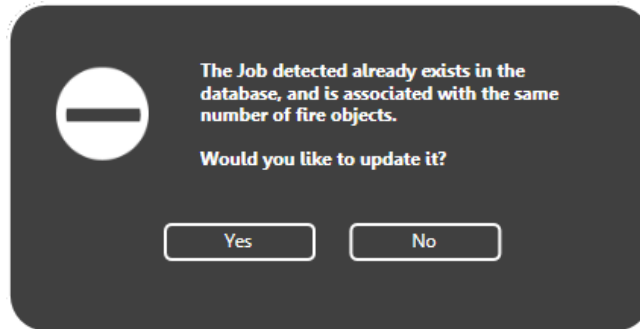


Figure 19 Update Job Confirmation Box

A message appears saying that the import was successful.

14. Click **Close**.

3.0 Getting Configuration Information from Flex-Net™

To get configuration information from the FACP

1. On the main display of any node or on an annunciator for any node in the system, press the MENU button.
2. Use the arrow buttons to scroll to **Config Info**, and then press ENTER.
The display shows the **ESDNo** (ESD number) and **TechNo** (technician number).
3. Press the down arrow button to see the Build Time (the date and time when the firmware on the CPU was built).
4. Press the down arrow button to see the IP information for this node (the IP address, the subnet mask, and the default gateway).



OPEN GRAPHIC NAVIGATOR

Canada
25 Interchange Way
Vaughan, ON L4K 5W3
Tel: (888) 660-4655
Fax: (888) 660-4113

U.S.A.
4575 Witmer Industrial Estates
Niagara Falls, NY 14305
Tel: (888) 647-2665

Technical Support
North America Only
Tel: (888) Mircom5
(888) 647-2665
International
Tel: (905) 660-4655

© MGC 2017
Printed in Canada
Subject to change without prior notice
<http://www.mircomgroup.com/opengn>