



2025 PRODUCT RELEASES



FIRE DETECTION
& ALARM



COMMUNICATION
AND VOICE ENTRY



SECURITY &
ACCESS CONTROL



SMART BUILDINGS



EMERGENCY LIGHTING

MIRCOM.COM

NEW PRODUCTS RELEASED IN 2025

TABLE OF CONTENTS

MIRCOM FIRE DETECTION AND ALARM (NEW PRODUCTS)	3
FX-240N Networkable Fire Alarm Control Panel	3
RAXN-4000LCDGC Main Color Display & Network Remote Annunciator	4
ALCN-240ISO Single Loop Card Adder	4
MIRCOM FIRE DETECTION AND ALARM (PRODUCT ENHANCEMENT)	5
FleX-Net FX-4000N Series	5
FX-400/FX-401 Addressable Fire alarm Panels	6
FA-300/301 LED Display Fire Alarm Control Panels	7
MPS-800(U) Series Manual Pull Stations	7
SGM-1004S NAC Output Module	8
SD-100 Series Smoke Detectors	8
400 Series Notification Appliances	9
Speakers & LED Speaker/Strobes	9
BB-1001WP(R)A and BB-1002WP(R)A Outdoor Weather Protected Enclosures	10
MIRCOM COMMUNICATION AND VOICE ENTRY (NEW PRODUCTS)	11
TX3-T10	11
Mircom Cloud Services	12
Mircom TX3 System & SmartONE Integration	13
TX3 USB Enrollment Readers	13
SMART BUILDINGS (NEW PRODUCTS)	14
OpenBAS-HV-NXVAV Series – Programmable Terminal Unit Controllers	14
SMART BUILDINGS (ENHANCEMENTS)	15
System Design Studio 2.1.0 and OpenBAS Firmware 3.18.0 Release	15
OpenGN 3.10	16



FIRE DETECTION & ALARM

NEW PRODUCTS

FX-240N – NETWORKABLE FIRE ALARM CONTROL PANEL



The FX-240N is a compact, fully networkable addressable control panel designed for small to mid-sized applications. It supports up to 240 addressable devices on a single SLC loop and provides advanced programming, reporting, and network capabilities consistent with the FlexNet architecture. With optional voice integration and powerful configuration tools, it offers a scalable platform suitable for both new installations and system expansions.

Technical Specifications & Features:

- **System Capacity:** Supports 1 addressable SLC loop, up to 240 MIX-4000 series devices
- **NAC Circuits:** Four NACs at 1.7A each with built-in synchronization
- **Networking:** Supports up to 24 supervised network nodes
- **Operation Modes:** Class A, B, or X wiring for SLC and NAC circuits
- **Programming Tools:** Boolean logic, Auto-Configuration, Modify Mode, and advanced configuration options
- **History:** Dual 5000-event logs for simplified troubleshooting and diagnostics
- **Expansion Support:** Compatible with QX-Mini Voice Evac for optional audio integration
- **Communication:** RS-232 and RS-485 for external modules and integration
- **Power:** 120VAC (60hz)/240VAC (50hz) input; supports 24VDC gel cell or SLA batteries
- **Interface:** Multilingual user interface with improved device reporting and operations

[MORE DETAILS](#)



FIRE DETECTION & ALARM

RAXN-4000LCDGC – MAIN COLOR DISPLAY AND NETWORK REMOTE ANNUNCIATOR



The RAXN-4000LCDGC is a crisp 6.5" high-resolution LCD with enhanced backlighting for FlexNet FX-4000N panels, capable of displaying up to eight events per page. Each event spans two lines for clear emergency information. The unit supports dual-function operation as a main display or remote annunciator across networked nodes and fits in one display bay in BBX-FXMNS, BB-1000, or BB-5000 series enclosures.

Technical Specifications & Features:

- **Display:** 16 lines × 40-character color graphical LCD
- **Event Display:** Shows up to 8 events per page; each event occupies 2 lines with 40 characters per line
- **Functionality:** Operates as main system display or network remote annunciator
- **Installation:** Occupies 1 display position in UB-1024DS, BBX-1024XT, BBX-FXMNS, BB-1000, or BB-5000 series enclosures
- **Event Indication:** Color-coded messaging for rapid emergency information recognition
- **Network Support:** Compatible with distributed nodes in FlexNet™ FX-4000N systems

[MORE DETAILS](#)

ALCN-240ISO - SINGLE LOOP CARD ADDER



The ALCN-240ISO provides one addressable loop for FX-4000 panels, supporting up to 240 physical MIX-4000 devices. Configurable for Class A, B, or X wiring, it mounts inside the main panel and includes an isolated power supply for ground fault protection. Only one module can be added per panel, installed as the last loop card.

Compliance & Installation:

- Mounts within the main panel enclosure over the main board
- Connects via internal bus and powered by FX-4000 main board
- Only one ALCN-240ISO can be installed per panel; additional SLC expansion requires installation as the last loop card

Technical Specifications & Features:

- **Loop Capacity:** Supports 1 addressable SLC loop
- **Device Support:** Up to 240 MIX-4000 series devices/modules in any combination
- **Wiring:** Configurable for Class A, Class B, or Class X wiring
- **Power Supply:** Includes isolated power input to address ground fault conditions
- **Cabling Requirements:** All circuits are power-limited; use FPL, FPLR, or FPLP cable types only

[MORE DETAILS](#)



FIRE DETECTION & ALARM

ENHANCEMENTS

FLEX-NET FX-4000N SERIES

Mircom's Flex-Net FX-4000N Series is a next-generation modular network fire alarm and emergency communication platform engineered for large, complex, and mission-critical environments. With highly flexible cabinet configurations, scalable control and annunciation, and support for up to seven LCD display/control chassis per node, the FX-4000N Series adapts easily to everything from single buildings to expansive campus-style installations. Beyond fire detection and alarm, it integrates voice evacuation, BACnet, Boolean logic, networking, and graphical workstations into a unified, future-ready solution.

Platform Highlights

- Supports multiple intelligent protocols, including MIX-4000 devices, Advanced Protocol (AP), and CLIP
- Modular architecture enables local, group, and global control and annunciation.
- Integrated fire alarm, voice evacuation, BACnet, Boolean logic, networking, and graphical workstation support
- Scales from simple systems to highly complex enterprise and campus deployments
- Designed to support future expansion and evolving life-safety requirements

Key Enhancements – Firmware 1.15.602 & Configurator 1.15.6

- Fire Service Access Elevator (FSAE) operation now supported using MIX-4000 series detectors, increasing design flexibility
- RA-1000 annunciators can now be individually programmed, simplifying configuration on larger systems
- Direct CSV export of configuration data and event logs from the configurator
- Event logs can now be downloaded directly through the configurator without third-party tools
- Global node designation allows centralized trouble reporting for large campus environments
- Zone switch operation events are now reported to OpenGN for improved system visibility
- Performance enhancements improve startup and stability on systems with large volumes of active troubles
- Support for the new multi-functional color display, RAXN-4000LCDGC, has been added. This main display/remote annunciator offers enhanced text readability and a user-friendly interface.
- Support for the new networkable single loop adder card, ALCN-240ISO, has been added. This single loop adder card provides a cost-effective solution for access to the FX-4000N fire alarm platform while enabling access for up to 240 physical Mircom manufactured input devices on the SLC loop.



[MORE DETAILS](#)



FIRE DETECTION & ALARM

FX-400/FX-401 ADDRESSABLE FIRE ALARM PANELS



NYC
Fire Dept



The FX-400/FX-401 Addressable Fire Alarm Control Panels are intelligent addressable fire alarm panels ideal for small to medium sized jobs and provide the following benefits:

- Easy to install and configure, reducing installation time and providing a simple first-choice solution.
- Shipped pre-assembled and equipped with a built-in dialer. Includes the mainboard, power supply, transformer, main display, black backbox, and a red or black door.
- Fully compatible with the new MIX-4000 Series. The FX-400 comes with one addressable (SLC) loop for a maximum of 240 MIX-4000 devices, while the FX-401 provides the option to expand to three addressable loops for a maximum of 720 MIX-4000 devices.

Updated Versions:

Component	Old Version	New Version
Panel Firmware (SO-434)	2.1.10	2.1.12
Panel Configurator (MSW-045)	2.1.3	2.1.5

Key Enhancements:

- **Positive Alarm Sequence (PAS):** Correction for PAS operations (SO-434 V2.1.12 required).
- **Device LED Operations:** Improved mirroring of panel conditions.
- **NAC Synchronization:** Enhanced coordination during resounding conditions.
- **Smoke Detector Reporting:** Obscuration levels now include sensitivity within the report.
- **MIX-4020/MIX-4021 Device Testing:** Alarm status now reflects proper input activation for magnet, heat, and smoke tests.
- **Auxiliary Relay Monitoring:** Panels can now display a trouble condition when an auxiliary relay is active.
- **Older Job Import:** Improved configurator handling for older jobs imported into new versions.
- **Job Conversion:** Existing FX-400 job files can be converted to FX-401 format.
- **Detector Sounder Base Correlation:** New checkbox option to auto-correlate detector sounder bases with heads.

Programming Simplification Features (Requires Minimum Loop Driver Firmware SO-435 V1.0.29):

- **Auto Configuration:** Correlates all detected input devices on the SLC to all NACs via the main display menu.
- **Modify Mode:** Real-time view of connected panel job; allows quick updates to options, tags, correlations, and device types.
- **CSV Tag Updates:** Export, edit, and re-import device tags via CSV for faster job file modifications.

Other Enhancements:

- **SLC Short Detection:** Improved Class A & B (Style 7 & Style 4) SLC short detection and reporting (requires loop driver FW SO-435 V1.0.39 or higher).
- **Main Display Button Responsiveness:** Enhanced push button responsiveness (requires display FW SO-243 V1.0.24 or higher).

Notes:

- If your panel firmware/configurator versions are compatible and new features are not required, upgrades are optional.
- Panel firmware can be verified via the sticker on the carton box or the mainboard.
- Compatibility tables are available under **Help > About MGC-400 Series Configurator Utility > Firmware Compatibility**.



[MORE DETAILS](#)



[MORE DETAILS](#)



FIRE DETECTION & ALARM

FA-300/301 LED DISPLAY FIRE ALARM CONTROL PANELS



NYC
Fire Dept

The FA-300 Series includes 8- and 12-zone panels with LED displays and optional integrated UDACT/Digital Communicator. Ideal for small to medium commercial, institutional, and industrial installations, the panels support remote LED/LCD annunciators and relay modules and can be configured via keypad (CFG-300) or PC. Key features include 5A power supply, RS-485 interface, sync protocols for major strobe manufacturers, and flexible zone and relay configuration.

Key Enhancements:

- Carbon Monoxide (CO) event signaling & reporting according to UL864, 10th edition and ULC-S527, 4th edition
- New “CO Alarm” queue available separating CO Alarm events from other alarm types.
- Adjusted DACT reporting to report specific CO Contact ID/SIA codes to the central station upon activation of a respective CO event.
- An optional checkbox has been added to the configurator for the Fire vs CO priority definition, with the default operations using Fire as priority over CO.



[MORE DETAILS](#)

MPS-800(U) SERIES MANUAL PULL STATIONS



The MPS-800MP(U) Series provides single- or two-stage manual fire alarm activation for FX-400 Series and Flex-Net FX-4000 panels. Constructed from high-quality LEXAN®, these pull stations support high-temperature durability, front-access wiring, and single-gang backbox mounting. Alarm LEDs are viewable from the front for troubleshooting. Addressing is configured via the MIX-4090 Device Programmer.

Key Enhancements:

- Introducing a new model featuring bold “FIRE” text in place of the flame symbol for clearer recognition while retaining all mechanical and electrical specifications of existing models.



[MORE DETAILS](#)



FIRE DETECTION & ALARM

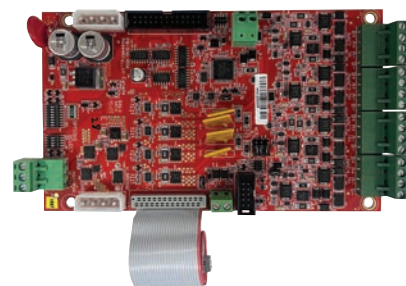
SGM-1004S NAC OUTPUT MODULE



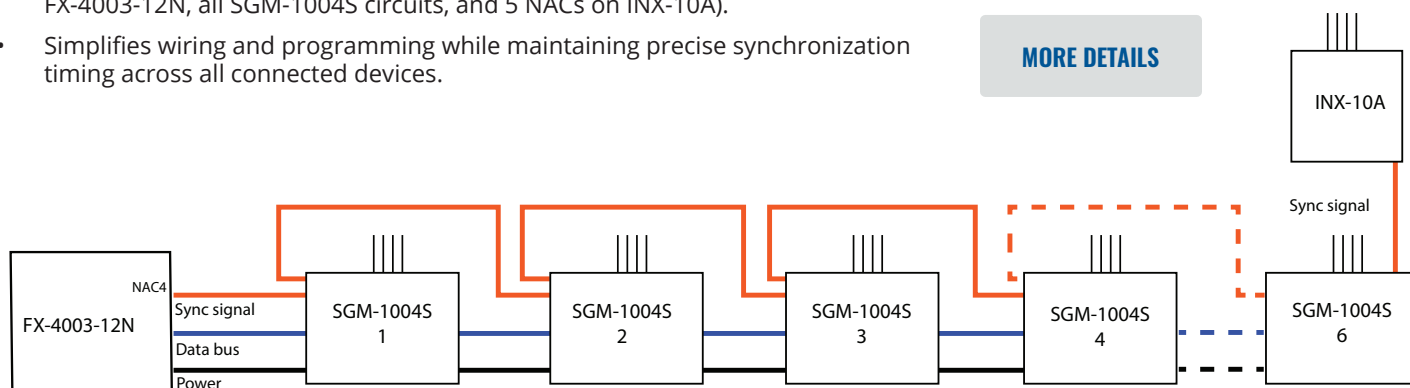
The SGM-1004S provides up to four Class A or B (Style Z or Y) indicating circuits, enabling compatible panels to expand their synchronized NAC outputs. Each circuit supports various notification appliances such as horns, strobes, and bells, offering flexible configuration and simplified wiring. The module mounts at the bottom of the chassis and connects to the main board via supplied cables.

Key Enhancements:

- Enables additional synchronized NAC outputs by following a synchronized NAC signal from a compatible FACU.
- Supports daisy chaining of up to **six (6) SGM-1004S modules**, maintaining identical synchronization patterns.
- Allows synchronization with **INX-10A modules** for expanded distributed NAC control using the **Sync In/Sync Out terminals**.
- Facilitates large-scale synchronization across multiple circuits — e.g., up to **32 synchronized NAC circuits** (3 NACs on an FX-4003-12N, all SGM-1004S circuits, and 5 NACs on INX-10A).
- Simplifies wiring and programming while maintaining precise synchronization timing across all connected devices.



[MORE DETAILS](#)



SD-100 SERIES SMOKE DETECTORS



The SD-100 Series photoelectric smoke detectors provide reliable detection for commercial, industrial, institutional, and residential environments. Their low-profile design, durable sensor head, and advanced detection algorithms ensure consistent performance with minimal maintenance. Select models include an integrated 135°F heat sensor for extended protection and all support the RSR-100 Remote Sensitivity Reader for simplified inspections.

Key Enhancement:

- The SD-100 Series now carries the ULC S529 4th edition listing, ensuring unmatched compliance and reliability for life safety applications.



[MORE DETAILS](#)



FIRE DETECTION & ALARM

400 SERIES NOTIFICATION APPLIANCES

The 400 NAC Series includes indoor and outdoor notification appliances such as horns, strobes, and horn/strobes designed for fire alarm and emergency communication systems. These devices offer high performance, low current draw, and synchronization capability with Mircom's fire alarm control panels. Available in wall and ceiling mount configurations, with standard and low-frequency (LF) options for code-compliant occupant notification.

Key Enhancements:

- Every indoor standard frequency and outdoor weather protected device now meets FM standards, ensuring our products comply with the top regulatory agencies.
- All white 400 NAC devices now support MASS NOTIFICATION applications through the addition of "ALERT" and "Blank" labels, giving more flexibility in every project.
- Introducing new White Outdoor Weather Protected devices, expanding the 400 NACs product line.
- All Outdoor Weather Protected NACs are now IP55 rated, delivering superior resistance to dust and water.



[MORE DETAILS](#)

SPEAKERS & LED SPEAKER/STROBES

MGC's Speakers and Speaker/Strobes provide a complete audible/visual notification solution with advanced LED technology for indoor/outdoor wall or ceiling mount applications. Available in 25/70V, 1/4, 1/2, 1, or 2 W, high candela, and red/white options, with trim plate/adaptor kits for limited ceiling back box space. External sync modules allow compatibility with any UL FACU or PSU. Fully compliant with NFPA 72, UL 1971, UL 1638, UL 1480, ULC S526, and ULC S541.

Key Enhancements:

- Introducing new White Outdoor Weather Protected devices, expanding the Speaker & Speaker/Strobes product line.
- Every indoor and outdoor weather protected speaker and speaker/strobe now meets FM standards, ensuring our products comply with the top regulatory agencies.
- All Outdoor Weather Protected Speakers and Speaker/Strobes are now IP55 rated, delivering superior resistance to dust and water.
- All white Speaker Strobes now support MASS NOTIFICATION applications through the addition of "ALERT" and "Blank" inserts, giving more flexibility in every project



[MORE DETAILS](#)



FIRE DETECTION & ALARM

BB-1001WP(R)A AND BB-1002WP(R)A OUTDOOR WEATHER PROTECTED ENCLOSURES



IP55
RATED

BB-1001WP(R)A and BB-1002WP(R)A provide robust outdoor protection for FlexNet remote annunciators, offering durable construction, secure access, and full UL/ULC approval for exposed environments. Both enclosures deliver dependable outdoor performance without requiring a heater or thermostat when used with compatible annunciator models.

Key Enhancements:

IP55 Rating: Both BB-1001WP(R)A and BB-1002WP(R)A enclosures are now IP55 rated.



BB-1001WPRA with
RAM-1032TZDS-CC
(sold separately)

BB-1001WPA
with RAM-1032TZDS-CC
(sold separately)

[MORE DETAILS](#)



BB-1002WPRA

BB-1002WPA

[MORE DETAILS](#)



COMMUNICATION & VOICE ENTRY

NEW PRODUCTS

TX3-T10

The TX3-T10 Touch Screen Video Intercom System delivers a modern, intuitive entry experience with a bright 10" outdoor-rated display, integrated access control, and seamless cloud connectivity. Its vandal- and weather-resistant IP65 enclosure makes it ideal for residential, commercial, and mixed-use buildings requiring reliable communication and secure building access.

Key Features:

- **10" full-color touch screen** with 1000-nit daylight-readable brightness
- **Communication options:** PSTN or MiVoIP cloud-based VoIP
- **Mobile & cloud integration:** MiVISION cloud configurator + MiENTRY app (one-way video, two-way audio)
- **Access control:** Built-in proximity reader, external reader interface, QR code support for temporary access
- **Entry management:** Integrated 2-door controller with two relays + elevator restriction capability
- **Media support:** JPEG, PNG, GIF, and MP4 uploads via TX3-Configurator for screensavers or advertising
- **Directory flexibility:** Group residents, tenants, or employees for organized navigation
- **Power options:** PoE+ (IEEE 802.3at Type 2) or 24–48 VDC external power (30W)
- **Construction:** IP65-rated vandal- and weather-resistant enclosure; silver or space gray; surface or flush mount
- **Warranty:** Up to 3-year out-of-box warranty

Benefits for Key Users:

Residents:

- Enter via access card or code, receive video calls on MiENTRY, unlock doors remotely
- Generate QR codes for guest or delivery access

Visitors:

- Call residents or reception, search directory, or use QR codes for quicker access

Property Managers:

- Remotely configure, monitor, and manage via MiVISION
- View logs, manage credentials, and reduce onsite service needs

Owners:

- Lower costs with built-in door control and PoE+ power
- Long-term value backed by a 3-year warranty

Installers:

- Fast deployment with PoE+, flexible mounting, and simple cloud-based configuration

FC **IP65** **ISED**
RATED **RATED**



[MORE DETAILS](#)



COMMUNICATION & VOICE ENTRY

MIRCOM CLOUD SERVICES

Mircom Cloud Services is an advanced suite of cloud-based solutions designed to optimize and streamline interactions with Mircom TX3 systems. It provides secure data storage, scalable subscription options, and powerful tools that improve operational efficiency for dealers, property managers, system integrators, and residents. By centralizing control, enhancing communication, and enabling remote management, Mircom Cloud Services delivers a smarter, more connected building experience.

Platform Components & Features:

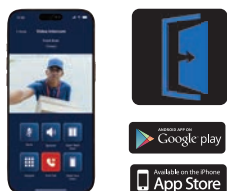
MiCONNECT – Administrative Cloud Platform

- Central administrative portal for all Mircom Cloud Services
- Enables dealers to manage customer accounts and service subscriptions
- Provides unified access to all cloud-based tools and applications
- Operates as a robust, scalable SaaS platform



MiVISION – Remote Configuration & Monitoring

- Allows remote configuration, monitoring, and management of TX3 devices
- Supports full oversight of access points and user permissions from any location
- Provides real-time monitoring of user activity, system status, and panel events



MiENTRY – Mobile Resident & Visitor Access App

- Offers residents live 1-way video and 2-way audio for guest verification
- Enables secure remote door unlocking through the mobile app
- Generates QR codes for temporary visitor or delivery access
- Integrates with TX3 Touch panels to support seamless package delivery workflows



MiVoIP – Cloud-Based Voice Communication

- Eliminates the need for traditional phone lines at the building
- Provides reliable VoIP communication with unlimited usage across North America
- Functions like a traditional line with improved cost efficiency

Mobile-Ready Credential Solution

- Replaces physical access cards with secure mobile credentials
- Credentials are stored, issued, and managed within the mobile app
- Requires only a one-time purchase of the reader and credential; the app is free

[MORE DETAILS](#)



COMMUNICATION & VOICE ENTRY

MIRCOM TX3 SYSTEMS & SMARTONE INTEGRATION

Integration between the SmartONE Smart Building Platform and Mircom's TX3 Series Access Control and Communication Systems.

This integration provides seamless experience for property managers using SmartOne Solution by combining SmartONE's home automation capabilities with Mircom's reliable TX3 access control and communication solutions.

The SmartONE platform connects to Mircom TX3 devices via MiVision (Mircom's cloud platform). To enable this integration functionality, property managers must have the MiVision Cloud Platform deployed at their sites.

TX3 USB ENROLLMENT READERS

Our USB Enrollment Readers make registering access credentials fast and effortless. Pre-configured with 26Bit Wiegand programming, they capture card data and display it in clear decimal format via USB keyboard emulation—eliminating manual entry and simplifying your workflow.

Installation is as easy as plug-and-play. Connect the reader to your PC, and Windows™ will automatically detect it. Open any word processing program, present a credential, and the card ID appears instantly on your screen.

Models Available:

- **TX3-P125** – 125 KHz USB Proximity Enrollment Reader for quick card ID capture.
- **TX3-Delta** – 13.5 MHz USB Contactless Smartcard Enrollment Reader for smartcard systems.

These readers save time, reduce errors, and make credential enrollment faster, easier, and more accurate.



TX3-P125

TX3-DELTA



SMART BUILDINGS

NEW PRODUCTS

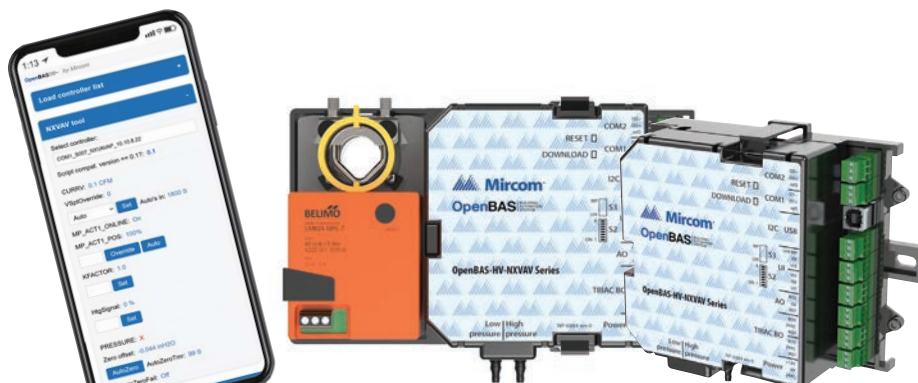
OPENBAS-HV-NXVAV SERIES PROGRAMMABLE TERMINAL UNIT CONTROLLERS



The OpenBAS-HV-NXVAV Series are fully programmable terminal unit controllers for VAV and VVT heating/cooling applications, supporting script and ladder logic programming. Optional integrated airflow sensors enable pressure-independent control, and optional brushless DC damper actuators simplify integration. Features include native BACnet/MSTP, Modbus/RTU, Optomux, N2-Open protocols, USB and remote IP access, versatile I/O mix, and compatibility with wireless sensors and memory expansion accessories.

Technical Specifications & Features:

- **Preloaded Control Script:** VAV cooling control with optional reheat, based on ASHRAE Guideline 36
- **Programming:** Supports both script and ladder logic programming via System Design Studio software (free download)
- **Airflow Control:** Optional integrated airflow sensor for pressure-independent control; supports cost-effective pressure-dependent strategies
- **Actuation:** Optional integrated brushless DC damper actuator for simplified installation and precise integration
- **Local Access:** USB port for configuration, commissioning, balancing, and firmware upgrades
- **Remote Access:** IP access through OpenBAS-NWK-ETH3 Ethernet gateway; mobile-friendly web pages for commissioning and balancing, accessible via Wi-Fi or LTE router
- **Protocols Supported:** Native BACnet/MSTP server, Modbus/RTU, Optomux, N2-Open across two RS485 COM ports; user-switchable end-of-line resistors for fieldbus termination
- **Belimo MP Integration:** Native support for MP actuators, valves, and room sensors; reflective position indicator included on actuator
- **Room Sensor Support:** Models available with temperature, humidity, and CO₂ sensing; NFC/App-based configuration; optional ePaper touchscreen displays
- **Airflow Sensor:** High accuracy, non-flow-through design (no filter), protects against accidental reversal of high/low pressure inputs; inputs can be inverted via software
- **I/O Mix:** 4 triac binary outputs, 4 universal inputs, 2 analog outputs; supports NTC thermistors, 1000 Ω RTDs, and other common input types
- **Wireless Sensors:** Supports up to 10 OpenBAS-HV-WLSTH wireless temperature and humidity sensors with OpenBAS-HVRF433R receiver
- **Memory Expansion:** Compatible with OpenBAS-ACC-32KNV non-volatile memory expansion accessory

[MORE DETAILS](#)



SMART BUILDINGS

ENHANCEMENTS

SYSTEM DESIGN STUDIO 2.1.0 AND OPENBAS FIRMWARE 3.18.0 RELEASE

The latest **System Design Studio (SDS) 2.1.0** release introduces major functionality enhancements and improved controller support across the OpenBAS ecosystem. This version is compatible with all OpenBAS NX controllers, OpenBAS-HV-LEARN, and OpenBAS-NWK-ETH3 units.

Key Enhancements

New OpenBAS-HV-NXVAV Controller Support:

- Mobile-friendly NXVAV Tool for VAV balancing, accessible remotely via Cloudflare tunnel support.
- Automatic Belimo MP device discovery and addressing.
- Manual or scheduled pressure auto-zeroing for long-term accuracy.

OpenBAS MiPages for AI (Beta):

- Create real-time custom dashboards using simple HTML and AI-assisted tools.
- Live communication with OpenBAS controllers without extra licenses or software.

Seamless Secure Remote Access:

- Remote controller monitoring/configuration via Cloudflare—no VPN or special software required.

Expanded Integration via IP Remote Points:

- Integrate up to 250 points from 20 IP devices using BACnet/IP and Modbus/TCP, no gateway needed.

Enhanced Diagnostics:

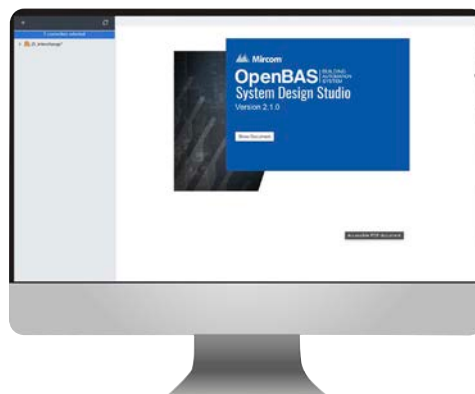
- Real-time packet statistics, device monitoring, and BACnet/MSTP debugging directly from the ETH3 dashboard.

Additional Improvements:

- USB data trending for onsite data collection.
- Expanded Modbus flexibility with new write functions and recording capabilities.
- Safer script management with “Remove and Archive” and “Force Save Scripts” options.

Compatibility:

- SDS 2.1.0 supports all NX controllers, OpenBAS-HV-LEARN, and OpenBAS-NWK-ETH3 (firmware 3.18.0 or higher).



[MORE DETAILS](#)



SMART BUILDINGS

OPENGN 3.10

OpenGN empowers the enterprise with a unified operator-first platform for the most complex and mission-critical environments. Its advanced campus visualization, real-time event overlays, and intuitive mapping deliver unmatched situational clarity across education, commercial, government, and industrial facilities. By integrating diverse building systems into a cohesive digital environment, OpenGN enhances how organizations monitor, respond, and safeguard people and infrastructure.

Benefits:

- Real-time visibility across fire, security, access, HVAC, and other building systems from one unified interface.
- Guided “Take Action” alerts that simplify decision-making and accelerate emergency response.
- Seamless integration with existing infrastructure for faster deployment and easier long-term maintenance.
- High-availability architecture supports continuous operation in mission-critical control rooms.

New Features and Benefits in OpenGN 3.10

OpenGN Remote Visualization Client

The new Remote Visualization Client expands visibility across a facility by allowing multiple users to view live OpenGN data and system events without requiring high-powered hardware at each workstation. This makes real-time situational awareness accessible across more locations and teams while keeping sensitive controls centralized.

Benefits:

- Allows many users to view OpenGN from distributed locations using affordable client hardware.
- Read-only access ensures system integrity while extending visibility across departments.
- Improves scalability — organizations can add new monitoring stations at low cost.
- Keeps all critical controls and data securely hosted on the primary OpenGN server or HPC.

Details:

- Connects directly to the central OpenGN server for live graphical display.
- Prevents changes to system configurations or data.
- Maintains full resolution and mapping visuals while preserving security.

Redundant Server Cluster for Mission-Critical OpenGN

The new server clustering architecture enhances system survivability by distributing the gateway, database, and graphical interface across multiple servers. If any component experiences failure, the system automatically transfers its responsibilities to another active node, maintaining uninterrupted operation.

Benefits:

- Ensures continuous availability of graphical visualization, database access, and gateway functions.
- Protects mission-critical data, events, and operations through automatic failover.
- Minimizes downtime and prevents data loss during server outages or maintenance.
- Creates a resilient enterprise platform capable of supporting large-scale, high-demand control rooms.

Details:

- The gateway collects mission-critical data, stores it in the database, and feeds it to OpenGN in real time.
- Automatic handoff ensures essential services remain active across the cluster.
- Supports uninterrupted monitoring and operational continuity in demanding environments.



SMART BUILDINGS

Always-On Event Notification Engine

OpenGN 3.10 introduces a significant upgrade to its notification architecture by moving email alerting from the graphical interface into the high-availability gateway. This ensures alerts continue to be delivered even if the primary OpenGN interface is offline or restarting.

Benefits:

- Email notifications remain active during interface restarts or outages.
- Improved reliability enhances communication for urgent and critical events.
- Ensures that alerting continues uninterrupted in mission-critical environments.
- Strengthens system survivability by decoupling notifications from the UI layer.

Details:

- Notification logic now runs independently within the gateway.
- Gateway continues processing and distributing event alerts even when the main UI is down.
- Delivers consistent, high-priority notifications with no operator intervention required.



[MORE DETAILS](#)