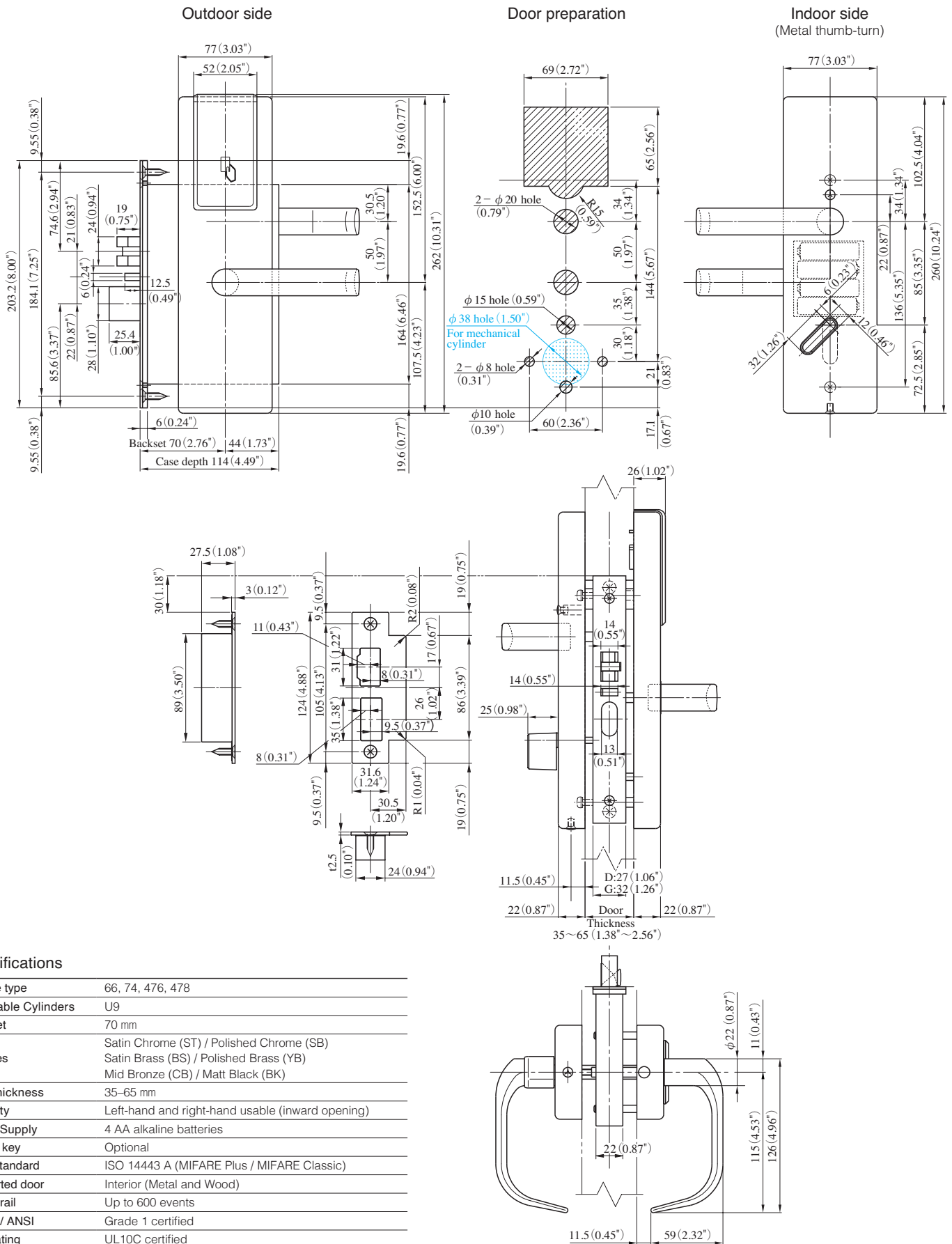


# Detail Drawing



## Specifications

Handle type	66, 74, 476, 478
Mountable Cylinders	U9
Backset	70 mm
Finishes	Satin Chrome (ST) / Polished Chrome (SB) Satin Brass (BS) / Polished Brass (YB) Mid Bronze (CB) / Matt Black (BK)
Door thickness	35-65 mm
Usability	Left-hand and right-hand usable (inward opening)
Power Supply	4 AA alkaline batteries
Mobile key	Optional
RFID standard	ISO 14443 A (MIFARE Plus / MIFARE Classic)
Supported door	Interior (Metal and Wood)
Audit Trail	Up to 600 events
BHMA / ANSI	Grade 1 certified
Fire Rating	UL10C certified