



FIRE DETECTION AND ALARM SOLUTIONS



TRUSTED FIRE DETECTION & LIFE SAFETY SYSTEMS

SECUTRON's complete range of technologically robust products are trusted by customers worldwide to safeguard what matters most.



TABLE OF CONTENTS

3	Addressable Fire Alarm Control Panels
4	Addressable Devices & Emergency Communication System
5	Conventional Fire Alarm Control Panels
6	Conventional Releasing Fire Alarm Control Panel
7	Remote Annunciators
8	Notification Devices and Speakers & Speaker/Strobes
9	Conventional Devices & Accessories
10	Complete Fire Alarm System
11	Fire Alarm Control Panels Reference Guide

MR-400 SERIES

ADDRESSABLE FIRE ALARM CONTROL PANELS



Secutron's MR-400 Series systems are powerful addressable fire alarm control units designed for small to medium sized commercial, industrial, and institutional buildings. Equipped with advanced features, the MR-400 Series deliver a dependable and economical solution for both new and retrofit applications. Available in single and multi-loop configurations, the MR-400 Series are engineered to offer exceptional flexibility, simple installation, and hassle-free operation.

MR-400R / MR-400RP*

- Single loop panel that supports up to 240 addressable devices

MR-401R / MR-401RP*

- 1 to 3 loop panel that supports up to 720 addressable devices with optional loop adder module

FEATURES & BENEFITS

- Auto-Configuration through the main display to correlate all detected inputs to all outputs
- 80-character backlit LCD display
- 4 Class A/B Notification Appliance Circuits (NACs)
- 1.5 Amps per Notification Appliance Circuit (NAC)
- Supports up to seven (7) LCD annunciators
- Built-in POTS Digital Communicator for central station reporting
- Flexible zone and group configuration options
- Built-in sync protocols for most major manufacturers including MGC 400 Series LED notification devices
- Compatible with MRI-4000 Series addressable devices
- Supports conventional smoke detectors through optional zone interface module
- Supports Style 4 (Class B), Style 6 (Class A), and Style 7 (Class X) configurations
- Listed to UL864 10th Edition

* "P" version is password protected (non proprietary).

MRI-4000 SERIES

ADDRESSABLE DEVICES



The MRI-4000 Series devices are comprised of advanced addressable detectors and modules for use with Secutron's addressable fire alarm control panels. The product family consists of addressable smoke detectors, heat detectors, monitor/control modules and mounting bases. With up to 240 addressable devices on a Signaling Line Circuit (SLC) loop, the MRI-4000 Series provide a robust and flexible solution for a wide variety of applications.

FEATURES & BENEFITS

- Variety of addressable detectors that provide exceptional performance and functionality
- Extensive range of intelligent modules to meet virtually any requirement
- Selection of mounting bases to support a wide range of applications
- Compatible panels support up to 240 devices (any combination) per Signaling Line Circuit (SLC) loop
- Spot detectors available with built-in isolation option (ISO models)
- Duct smoke detector features customizable remote testing and one-pipe design to ensure optimal performance
- All devices are easily configured using handheld programming tool

AUDMAX

EMERGENCY COMMUNICATION SYSTEM



Secutron's AUDMAX is a compact emergency communication system designed to deliver critical notifications with precision and power. With its advanced features and customizable options, it provides users with complete control over their emergency notification system, offering both safety and peace of mind. Easy to install and configure, the AUDMAX system delivers synchronized audio and visual alerts across the facility, ensuring that everyone receives critical information precisely when they need it.

FEATURES & BENEFITS

- Integrates with Secutron's addressable panels through the Signaling Line Circuit (SLC) loop or any UL864 listed panel through supervised relay contacts and/or Notification Appliance Circuits
- Supports up to 60 watts of audio output and 5 Amps of Notification Appliance Circuit (NAC) power per enclosure
- Expandable solution that supports up to 6 panels (1 master and 5 booster panels)
- Create custom digital messages using audio library, text-to-speech, and voice recording options
- Supports up to 6 remote microphones and/or Local Operating Consoles (LOC)
- Field selectable 25V or 70V audio output
- UL listed to generate 520Hz low frequency tones through compatible speakers
- Listed to UL864 10th Edition

MR-2300 SERIES

CONVENTIONAL LCD FIRE ALARM CONTROL PANELS



Secutron's MR-2300 Series conventional fire alarm control panels are multi-zone units designed for maximum flexibility, easy installation and worry-free operation. Equipped with advanced features, the MR-2300 Series panels provide a reliable and cost-effective solution for both new and retrofit applications. Available in six and twelve zone configurations, the MR-2300 Series panels are designed for small to medium-sized applications and can be configured to meet specific building requirements.

MR-2306-DDR

- 6 Class B Initiating Device Circuits (IDCs) and 2 Class B Notification Appliance Circuits (NACs)

MR-2312-DDR

- 12 Class B Initiating Device Circuits (IDCs) and 4 Class B Notification Appliance Circuits (NACs)

FEATURES & BENEFITS

- Equipped with an easy to read 40-character backlit LCD display that provides detailed system information
- Integrated UDACT/Digital Communicator for central station reporting
- Optional internal relay circuit modules for applications that require additional relay functionality
- Supports MGC's SD-100 Series and System Sensor's i3 Series conventional smoke detectors
- Optional Class A Converter Modules that allow for full Class A configuration
- Built-in RS-485 interface that supports remote LCD and LED annunciators
- Built-in sync protocols for MGC 400 Series and most major manufacturers
- Listed to UL 864 10th Edition

MR-2320-R

CONVENTIONAL RELEASING FIRE ALARM CONTROL PANEL



Secutron's MR-2320-R is a field configurable releasing control panel designed specifically for suppressing fires in high-risk environments. Intended for use with deluge sprinkler systems, pre-action sprinkler systems and agent release systems, the MR-2320-R controls the release of water or fire extinguishing agents in high-risk areas to prevent fast-spreading fires, minimizing the need for costly equipment replacement and preventing detrimental business disruptions.

FEATURES & BENEFITS

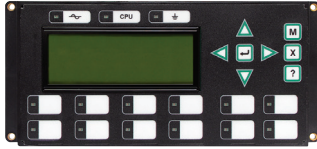
- 6 Class B Initiating Device Circuits (IDCs) and 4 Class B Notification Appliance Circuits (NACs)
- 14 pre-configured modes of operation
- Simple front panel configuration
- Supports single and dual hazard applications
- Optional Class A converter modules
- Two event history logs
- Cross-zone capability
- Special power supply and releasing circuit protections
- Output Notification Appliance Circuits (NACs) can be configured for Steady or Escalating tone
- Soak Timer 0 to 15 minutes
- Abort Release Timer
- Supports up to 6 LCD/LED remote annunciators
- Listed to UL864 10th Edition



REMOTE ANNUNCIATORS

Secutron offers a wide variety of remote annunciators that are designed to give quick, clear, easy-to-read instructions, ensuring that in any emergency situation, information is presented in a way that's straightforward and actionable.

LCD ANNUNCIATORS



RAX-LCD-LITE REMOTE LCD ANNUNCIATOR

- 80-character backlit LCD display
- Mounts in an MMX-BB-1000DR enclosure
- Compatibility listed for use with the MR-400 Series panels



RAM-3500-LCD REMOTE LCD ANNUNCIATOR

- 80-character backlit LCD display
- Mounts in an MMX-BB-1000DR enclosure
- Compatibility listed for use with the MR-401 Series panels



RAM-3318-LCD REMOTE LCD ANNUNCIATOR

- 80-character backlit LCD display
- Mounts in an MMX-BB-1000DR enclosure
- Compatibility listed for use with the MR-400 Series panel



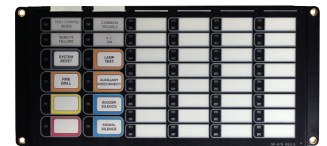
MR-2300-LCDR CONVENTIONAL REMOTE LCD ANNUNCIATOR

- 40-character backlit LCD display
- Comes complete with enclosure
- Compatibility listed for use with the MR-2300 Series panels

LED ANNUNCIATORS *(Compatible with all Secutron fire alarm control panels)*

RAM-1032TZDS/RAM-1032TZDS-CC MAIN REMOTE LED ANNUNCIATOR

- Provides 32 points of LED annunciation
- Mounts in an MMX-BB-1000DR Series enclosure
- "CC" model is conformally coated and mounts in an MMX-BB-1000WPRA Series enclosure



RAX-1048TZDS/RAX-1048TZDS-CC PROGRAMMABLE LED ANNUNCIATOR MODULE

- Provides 48 points of LED annunciation
- Connects to a RAM-1032TZDS annunciator or the MR-401 control unit
- Mounts in an MMX-BB-1000DR Series enclosure or the MR-401 enclosure
- "CC" model is conformally coated and mounts in an MMX-BB-1000WPRA Series enclosure



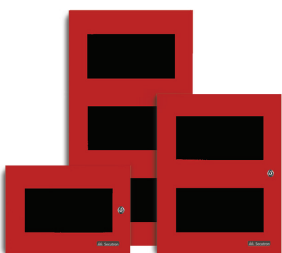
ENCLOSURES

MMX-BB-1000DR SERIES REMOTE ANNUNCIATOR ENCLOSURES

- Supports one, two or three RAM/RAX style annunciator modules
- For use with RAX-LCD-Lite, RAM-3318-LCD, RAM-3500-LCD, RAM-1032TZDS and RAX-1048TZDS

MMX-BB-1000WPRA SERIES OUTDOOR WEATHER PROTECTED ENCLOSURES

- Supports one or two "Conformal Coated (CC)" style annunciator modules
- For use with RAM-1032TZDS-CC and RAX-1048TZDS-CC



400 SERIES

NOTIFICATION APPLIANCES



Wall/Ceiling Mount
Horns

Wall/Ceiling Mount
Strobes

Wall Mount
Horn/Strobes



Low Frequency
Wall/Ceiling Mount Sounder

Low Frequency
Wall Mount Sounder Strobe



Ceiling Mount
Strobes

Ceiling Mount
Horns/Strobes

Sync Module



Weather Protected
Wall/Ceiling Mount
Horn

Weather Protected
Wall Mount
Strobe

Weather Protected
Wall Mount
Horn/Strobe

FEATURES & BENEFITS

- Advanced LED technology allows for a higher capacity of devices per circuit
- Multiple field selectable audible settings
- Horn/Strobe models available with standard and high candela settings in one unit
- Device settings are on the back to prevent tampering
- All models include a mounting plate that allow for the devices to be pre-wired
- Optional MRI-4050 sync module (use with any UL864 10th edition Fire Alarm Control Unit)
- Weather Protected options operate from -40°C to 66°C (-40°F to 151°F)

SPP/SPPS SERIES

SPEAKERS & SPEAKER/STROBES



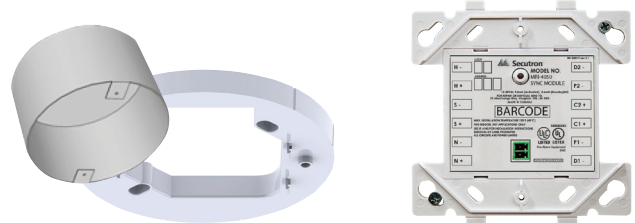
Ceiling Mount Speakers

Ceiling Mount Speaker/Strobes



Wall Mount Speakers

Wall Mount Speaker/Strobes



Ceiling Mount Accessories

Sync Module



Weather Protected
Wall/Ceiling Mount Speaker

Weather Protected
Wall Mount Speaker/Strobe

FEATURES & BENEFITS

- 25V and 70V models, Red or white finish
- Adjustable speaker power settings
- Standard and high candela speaker/strobes
- Support multiple languages with plastic inserts
- Device settings are on the back to prevent tampering
- All models include a mounting plate that allows for the devices to be pre-wired
- Optional MRI-4050 sync module (use with any UL864 10th edition Fire Alarm Control Unit)
- Weather Protected options operate from -40°C to 66°C (-40°F to 151°F)

CONVENTIONAL DEVICES & ACCESSORIES



UL only

MRM-800 SERIES MANUAL PULL STATIONS

- Single stage, dual action pull station operation that helps prevent unintentional activation
- Complies with ADA closed-fist operation
- Uses raised symbols and icons instead of printed text
- Durable Lexan construction for long lasting performance
- Available in conventional and addressable versions
- Optional surface mount back box



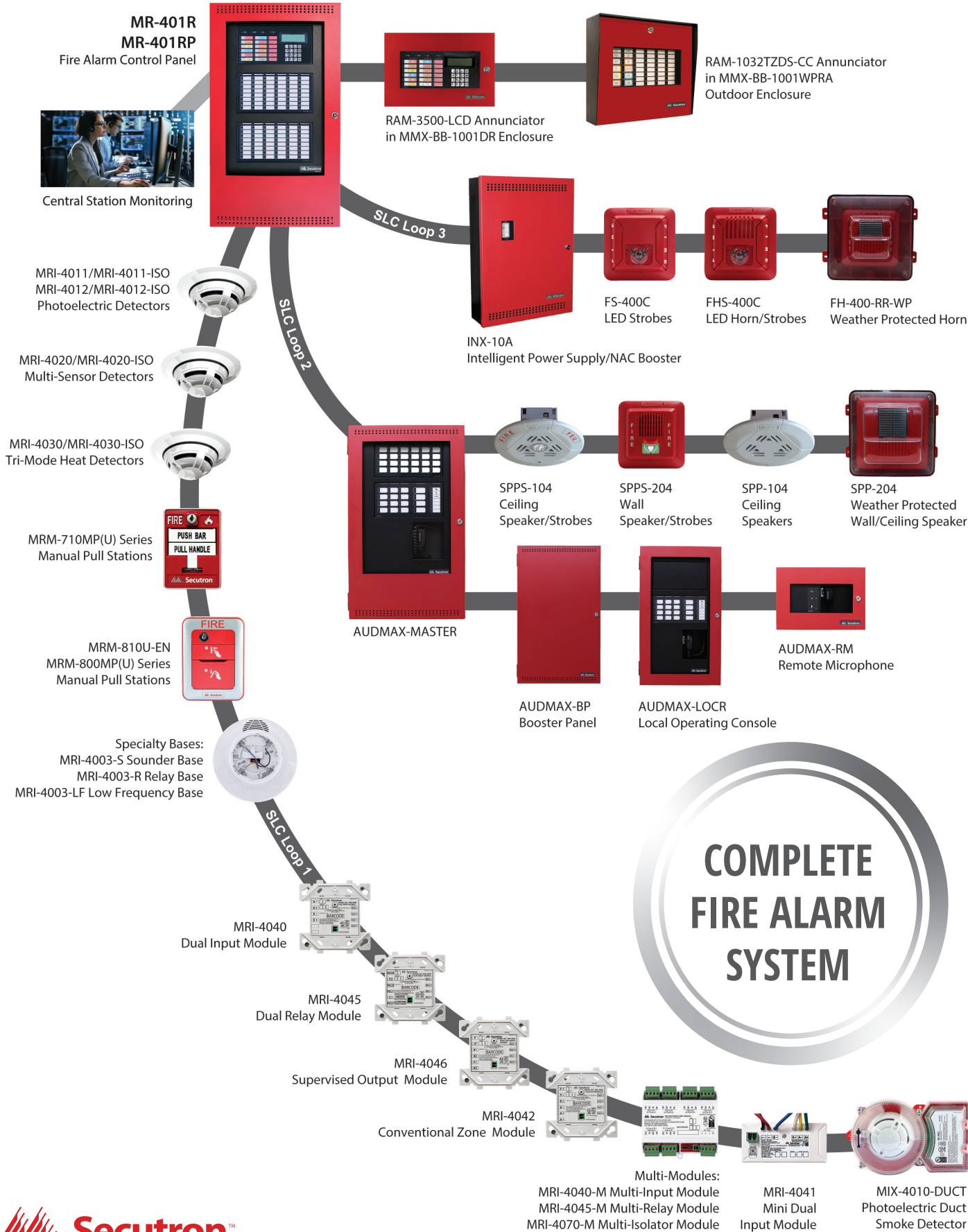
MRM-700 SERIES MANUAL PULL STATIONS

- Dual action pull station operation
- Die-cast metal construction
- High-gloss red enamel finish
- Meets ADA 5 lbs. maximum manual-force
- Available in conventional and addressable versions
- Mounts on a standard single gang box
- Optional surface mount and weather-proof back boxes



INX-10A ADDRESSABLE NOTIFICATION APPLIANCE CIRCUIT (NAC) EXPANDER/POWER SUPPLY

- Addressable Notification Appliance Circuit (NAC) expander/power supply for use with Secutron addressable panels
- Compatible with any UL listed 24VDC fire alarm control panel
- Extends the power capabilities of existing Notification Appliance Circuits (NACs) as well as providing power for other ancillary devices
- 5 configurable outputs/10 Amps total
- Built-in sync protocols for MGC 400 Series and most major manufacturers



FIRE ALARM CONTROL PANELS REFERENCE GUIDE

Features	Addressable		Conventional		Releasing
	MR-400R MR-400RP*	MR-401R MR-401RP*	MR-2306-DDR	MR-2312-DDR	MR-2320-R
Number of Zones	Flexible	Flexible	6 Class A or B	12 Class A or B	6 Class A or B
Number of Signaling Line Circuits (SLC)	1	1 (expandable to 3)	N/A	N/A	N/A
Number of Signaling Line Circuit (SLC) Devices	240	240-720	N/A	N/A	N/A
Signaling Line Circuit (SLC) Loop Style	Class A, B, X	Class A, B, X	N/A	N/A	N/A
Number of Integral Notification Appliance Circuits (NACs)	4 Class A/B	4 Class A/B	2 Class B	4 Class B	4 Class B
Notification Appliance Circuit (NAC) Rating	1.5 Amps/NAC	1.5 Amps/NAC	1.7 Amps/NAC	1.7 Amps/NAC	1.7 Amps/NAC
LCD Display Size	4x20 (80 characters)	4x20 (80 characters)	2x20 (40 characters)	2x20 (40 characters)	N/A
Built-in POTS Digital Communicator	YES	YES	YES	YES	NO
Number of Event Logs	2 (400 alarm & 400 general)	2 (400 alarm & 400 general)	2 (200 alarm & 200 general)	2 200 alarm & 200 general)	2 (200 alarm & 200 general)
Number of Remote Annunciators Supported	7	7	6	6	6
Built-in Strobe Synchronization (MGC, System Sensor, Wheelock, Gentex, Amseco)	YES	YES	YES	YES	YES
Max. System Power	5 Amps	5 Amps	5 Amps	5 Amps	5 Amps
Battery Charger Range	10-24AH	10-42AH	4-12AH	4-12AH	4-12AH
Max. Battery in Enclosure	18AH	18AH	12AH	12AH	12AH
Supports System Sensor i3 detectors with Freeze Warning	N/A	N/A	YES	YES	YES
Built-in Sync-Selective Silence	YES	YES	YES	YES	N/A
Agency Listings	UL864 10th Edition, CSFM, NYC Fire Dept	UL864 10th Edition, CSFM, NYC Fire Dept	UL864 10th Edition, CSFM, MEA	UL864 10th Edition, CSFM, MEA	UL864 10th Edition, CSFM, MEA, FM

* "P" version is password protected (non proprietary).



T 905.660.4655

TF 1.888.660.4655

secutron.com



This document is provided by Mircom Technologies Ltd., MGC Systems Corp., or their affiliates, subsidiaries and brands, for convenience or marketing only and does not describe products or services technically. For technical information refer to technical manuals. We do not make representations or warranties regarding this information, including as to completeness or accuracy. We may change these contents at any time and reserve all rights in the contents, including copyrights, trademarks and other intellectual property.