

LED NOTIFICATION APPLIANCES



LED HORNS & HORN STROBES



MGC's Notification Appliances offer an audible/visual solution that delivers exceptional energy efficiency in a compact design.

MGC offers multiple field – selectable audible/visual settings, as well as a wide range of mounting options in an easy to install compact unit.

Utilizing advanced LED technology, the MGC Notification Appliances provide a much lower current draw than xenon bulb technology. This in turn allows for more devices on a NAC circuit while reducing the number of external power supplies required.

Designed for indoor/outdoor wall or ceiling mount applications, MGC's Notification Appliances comply agency requirements including the NFPA 72, UL 1971, UL1638, UL1480, ULC S526 and ULC S541.



Wall/Ceiling Mount
Horns



Wall Mount
Strobes



Wall Mount
Horn/Strobes



Weather Protected
Wall/Ceiling Mount Horn

**WEATHER
PROTECTED**



Ceiling Mount
Strobes



Ceiling Mount
Horns/Strobes



Surface Mount
Back Boxes



Weather Protected
Wall Mount Strobe



Weather Protected
Wall Mount Horn/Strobe

FEATURES

- Standard and high candela settings in one unit (Horn Strobe) to meet virtually any application
 - Wall Mount models:
15, 15/75, 30, 75, 110, 185 cd
 - Ceiling Mount models:
15, 15/75, 30, 75, 110 cd
 - Reduction in SKUs to stock
- Multiple field-selectable audible settings
 - Temporal, Continuous, March Time and 20 BPM audible tones
 - High and low volume settings
- Weather Protected Devices
Temperature ranges from
-40°C to 66°C (-40°F to 151°F)

ENERGY EFFICIENT

- Advanced LED technology provides superior current draw performance
 - Allows for a higher capacity of notification devices per circuit
 - Eases external power supply requirements

SAFE

- Device settings are located on the back of the unit to prevent tampering
- Compliance
 - UL 1971, UL 1638, UL 464
 - ULC-S525, ULC-S526
 - NFPA 72 2016 Edition (Meets 20 millisecond pulse width requirement)

EASY TO INSTALL

- All models include a mounting plate that allows for the devices to be pre-wired (Horn Strobes)
- Includes shorting clip that allows installers to test the wiring before the device is installed
- Wide range of mounting options
 - Mount to Mircom BB-400 surface mount back box, single gang, 4-inch square, double gang, octagon and 4-inch junction boxes

Wall/Ceiling Mount Horns	
FH-400-RR	Red
FH-400-WW	White
FH-400-RR-WP	Weather Protected, Red
Wall Mount Strobes	
FS-400-RR	Red
FS-400-WW	White
FS-400-RR-WP	Weather Protected - Red
Wall Mount Horn/Strobes	
FHS-400-RR	Red
FHS-400-WW	White
FHS-400-RR-WP	Weather Protected - Red
Ceiling Mount Strobes	
FS-400C-RR	Red
FS-400C-WW	White
Ceiling Mount Horns/Strobes	
FHS-400C-RR	Red
FHS-400C-WW	White
Surface Mount Back Boxes	
BB-400R	Red
BB-400W	White
Accessories	
MIX-4050	MGC SYNC module
MRI-4050	Secutron SYNC module

LED SPEAKERS & SPEAKER STROBES



MGC's Speakers and Speaker Strobes extend the notification appliance offering to provide a complete family lineup which utilizes advanced LED technology.

Designed for indoor/outdoor wall or ceiling mount applications, MGC's Speakers and Speaker Strobes are offered in 25/70 V, high candela and red/white options for flexibility.

MGC also offers a trim plate/adaptor kit for retrofit applications where ceiling back box space is limited.

MGC's Speaker and Speaker/Strobes comply with agency requirements including the NFPA 72, UL 1971, UL1638, UL1480, ULC S526 and ULC S541.



Ceiling Mount Speakers



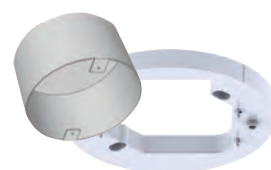
Ceiling Mount Speakers/
Strobes



Wall Mount Speakers



Wall Mount Speaker/Strobes



Ceiling Mount Accessories

**WEATHER
PROTECTED**



Weather Protected
Wall/Ceiling Mount Speaker



Weather Protected
Wall Mount Speaker/Strobe

FEATURES

- All models with 25V/70V options
- All models with RED or WHITE options
- Speaker Power Setting: ¼, ½, 1, 2 W
- Built-in Synchronization Candela Settings for Speaker/Strobes
- Wall Mount models: 15, 30, 75, 110, 185, 15/75 cd
- Ceiling Mount models: 15, 30, 75, 110, 125, 15/75 cd
- Ceiling Mount High Candela models: 50, 75, 90, 130, 185, 15/75 cd
- Weather Protected Devices
Temperature ranges from -40°C to 66°C (-40°F to 151°F)

ENERGY EFFICIENT

- Advanced LED technology provides ultra low current draw performance
 - o Allows for a higher capacity of notification devices per circuit
 - o Eases external power supply requirements

FLEXIBLE

- Multiple language plastic inserts included with speaker/strobes (English/ French/Spanish)

SAFE

- Device settings are located on the back of the unit to prevent tampering
- Compliance
 - o UL 1480, UL 1971 and UL 1638
 - o ULC-S541 and ULC-S526
 - o NFPA 72 (Meets 20 millisecond pulse width requirement)

EASY TO INSTALL

- Wall models can be mounted directly onto a 4" square back box.
- Ceiling model can be mounted on a 6" round flush back box (IB-104)
- Optional spacer (SPKC-W) for mounting on a 4" square electrical box

Ceiling Mount Speakers

SPP-104-25	White
SPP-104-70	White
SPP-104-25R	Red
SPP-104-70R	Red

Ceiling Mount Speakers/Strobes

SPPS-104-25	White
SPPS-104-70	White
SPPS-104-25R	Red
SPPS-104-70R	Red
SPPS-104-25H	High candela White
SPPS-104-70H	High candela White
SPPS-104-25HR	High candela Red
SPPS-104-70HR	High candela Red

Wall Mount Speakers

SPP-204-25	White
SPP-204-70	White
SPP-204-25R	Red
SPP-204-70R	Red

Wall Mount Speaker/Strobes

SPPS-204-25	White
SPPS-204-70	White
SPPS-204-25R	Red
SPPS-204-70R	Red
SPPS-204-25R-WP	Weather Protected - Red
SPPS-204-70R-WP	Weather Protected - Red

Weather Protected Wall/Ceiling Mount Speakers

SPP-204-25R-WP	Red
SPP-204-70R-WP	Red

Accessories

IB-104	6" Back Box
SPKC-W	Spacer/trim ring
MIX-4050	MGC SYNC module
MRI-4050	Secutron SYNC module



About Mircom®

Founded in 1991, Mircom is a global designer, manufacturer and distributor of Intelligent Building Solutions. Reaching customers in over 100 countries worldwide, Mircom's portfolio includes: fire detection & alarm, communications & security, mass notification, nurse call, and building automation & smart technologies. Mircom's vision is to make buildings worldwide safer, smarter, and more livable.

Our global network of dedicated Sales and Service Offices, known as Mircom Engineered Systems, allows us to be a full solution provider. Through Mircom ES, we're able to provide and fully service our line-up of innovative and advanced solutions which are scalable to satisfy diverse user demands, from small & mid-size buildings to the world's most complex applications.

CORPORATE/CANADA

Tel: 888.660.4655

Fax: 888.660.4113

USA

Tel: 888.660.4655

Fax: 888.660.4113

INTERNATIONAL

Tel: 905.660.4655

Fax: 905.660.4113

mircom.com

