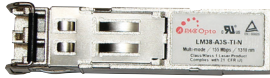


FOM-2000-UM

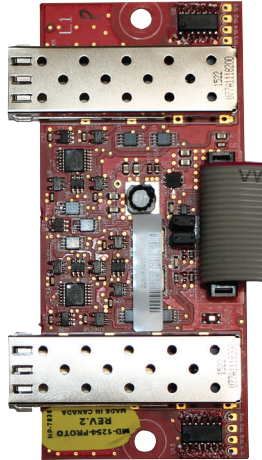
Single-Mode or Multi-Mode Fiber Module



FOM-CONN-MM



FOM-CONN-SM



FOM-2000-UM

Features

- Compatible with LC Duplex terminated fibre pairs or patch cords
- No system configuration changes or special firmware needed
- 2 bays for optical modules
- Optical isolation prevents ground loops
- For use with FleX-Net panels
- Multi-mode & single-mode can be used with fibre pairs that are the same type
- Max of 63 nodes can be connected

Description

The FOM-2000-UM allows for single-mode or multi-mode fiber optic communication on a MMX™ network.

Plug-in optical modules allow for cost-effective network configurations made of fiber only or a mix of wires, single-mode fibers and multi-mode fibers. Single mode fiber links can be up to 10 km in length and multi-mode links can be up to 1.5 km.

The FOM-2000-UM is compatible with LC Duplex terminated fiber pairs or patch cords.

Installation in a MMX™ network requires FNC-2000 network interface controller.



Specifications

Single-Mode	
Fiber type	Single-mode 9/125 µm
Connection type	LC Duplex
Input rating	Alarm: 16 mA @ 24 VDC Standby: 16 mA @ 24 VDC
Optical link budget	9.8 dB
Wavelength	1310 nm
Temperature range	0°C to 49°C ambient, 93% relative humidity (non-condensing)
Maximum length	10 km

Multi-Mode	
Fiber type	Multi-mode (50/125 µm or 62.5/125 µm)
Connection type	LC Duplex
Input rating	Alarm: 42 mA @ 24 VDC Standby: 42 mA @ 24 VDC
Optical link budget	6.6 dB
Wavelength	1310 nm
Temperature range	0°C to 49°C ambient, 93% relative humidity (non-condensing)
0	1.5 km

Ordering Information

Model	Description
FOM-2000-UM	Allows for single-mode or multi-mode fibre optic communication on a Flex-Net network. Add FOM-CONN-SM and FOM-CONN-MM
FOM-CONN-SM	Fibre Optic Connector Single Mode (pack of 2). Must use a FOM-2000-UM
FOM-CONN-MM	Fibre Optic Module Connector Multi-mode (pack of 2). Must use a FOM-2000-UM
FNC-2000	Fibre Network Controller (Connects to the FOM-2000-UM)