



**Description**

The TX3 IP Wiegand Module is an optional interface module that enables seamless integration between Mircom’s TX3 T Series Touch Video Intercom Systems (such as TX3 T10) and any Wiegand compatible third party access control system.

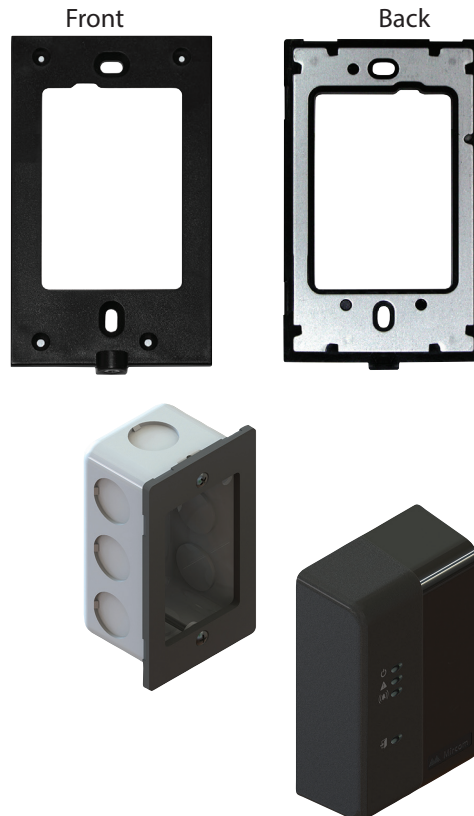
Connected via an IP network, the TX3 IP WIEGAND allows the TX3 T Series video intercom to function as a keypad and card reader, transmitting facility and card codes to an external access control system through standard Wiegand output

A TX3-T Series panel, for instance, TX3-T10, connected to TX3-IP-WIEGAND can send a facility code and a card code to a third-party access control system. The Wiegand output is sent in a 26-bit standard format, as described in the table below. The facility codes shown in the table are default values.

**Feature/Benefits**

- Supports integration with third party Wiegand compatible access control systems
- Compatible with TX3 T Series Touch Video Intercom panels (e.g., TX3 T10)
- Flexible Programming: local via USB or remotely via TCP/IP
- Operating Temperature Range: 0° C - 49° C (32° F - 120° F)
- Indoor use only
- Dimensions: 122 mm x 79 mm x 41 mm (4 25/32” x 3 3/32” x 1 39/64”)
- Metal reinforced mounting bracket for secure installation and precise alignment
- Flexible Power options: 12 VDC, 24–48 VDC or PoE
- Network connectivity via TCP/IP
- Scalable architecture with no limit on the number of networked TX3 devices
- Simple mount onto a single-gang electrical box and connect CAT-5/6 cable for both power and network communication.

Mounting Bracket



Event	Facility Code	Card Code
Access is granted by the resident for a visitor call	167	Dial code associated with the resident
Access is denied by the resident for a visitor call	168	Dial code associated with the resident
Access is granted by a keyless code	169	Dial code associated with the resident whose Keyless code is used

**Notes:**

1. TX3-IP-WIEGAND is only compatible with TX3-T Series panels, for instance TX3-T10.
2. TX3-IP-WIEGAND requires TX3 Configurator version 3.2.1 or greater. With the Configurator, you can add the TX3-IP-WIEGAND as a device and program the facility codes.
3. The TX3-IP-WIEGAND panel receives IP messages from the configured TX3-T10 panel and generates the corresponding Wiegand bitstream on DATA0 and DATA1 Wiegand output interface for the access events. The process is confirmed by the TX3-IP-WIEGAND Alert Amber LED blinking on the TX3-IP-WIEGAND.
4. The maximum distance for the Wiegand wiring from TX3-IP-WIEGAND to the access control system is 500 feet using 18 AWG, and 250 feet using 22 AWG. Mircom recommends a foil-shielded, multiple-conductor stranded cable, at least 22 AWG. For example, use Belden 9535 or a similar cable.

## Ordering Information

Model	Description
<b>Module</b>	
TX3-IP-WIEGAND	IP Wiegand module allows TX3 T Series Touch Video Intercom Systems to integrate with Wiegand compatible third party access control systems.
<b>Compatible Entry Systems</b>	
TX3-T10-S	TX3 Touch Video Intercom System (Silver)
TX3-T10-G	TX3 Touch Video Intercom System (Space Gray)



**Canada**

25 Interchange Way Vaughan, ON L4K 5W3  
 Telephone: (905) 660-4655 | Fax: (905) 660-4113

**U.S.A.**

4575 Witmer Industrial Estates Niagara Falls, NY 14305  
 Toll Free: (888) 660-4655 | Fax Toll Free: (888) 660-4113

This document is provided by Mircom Technologies Ltd., MGC Systems Corp., or their affiliates, subsidiaries and brands, for convenience or marketing only and does not describe products or services technically. For technical information refer to technical manuals. We do not make representations or warranties regarding this information, including as to completeness or accuracy. We may change these contents at any time and reserve all rights in the contents, including copyrights, trademarks and other intellectual property. All other trademarks and registered trademarks are properties of their respective owners.