



## Description

A 7" colour display combined with the possibility of cyclically selecting the cameras to which the IPer-voice can be connected, this monitor guarantees effective monitoring of all areas under video surveillance. Furthermore, the integrated video door phone mailbox system shows messages left by visitors who called the users while they were away.

Modo is performance leader also for other video door phone functions: intercom calls, including calls to switchboard, have no limit and each name can be directly called up using the virtual keypad on screen, for additional practicality. Furthermore, audio feed to the outside can be cut off during hands-free communications for additional conversation privacy. Audio efficiency is optimal using two high power speakers. Audio management is free offering several ring tones to choose from. The ringer can be turned off using the mute function with LED indicator.

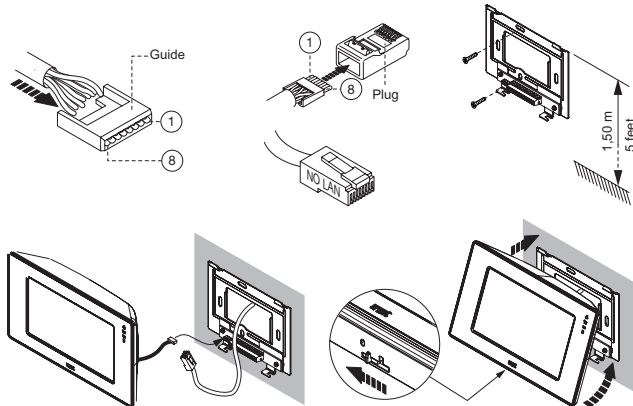
There is more freedom and versatility: this monitor can autonomously manage two electric locks. Modo implements state-of-the-art technology with only one frame, with smooth shapes and careful choice of materials. Function management is simple with Modo. The touch-screen menu controls all operations. A user-friendly icon system facilitates command use with the same ease as a mobile phone.

## Features

- 7" colour display with touch-screen menu
- Unlimited intercom calls from virtual keypad on screen
- Unlimited activations using virtual keypad
- Possibility of calling several switchboards or manned stations
- Two access outputs for door strikes or gates.
- Selectable ring tones
- Surveillance camera scan cycle
- Mailbox query function
- Automatic door opener function
- Mute function with LED indicator

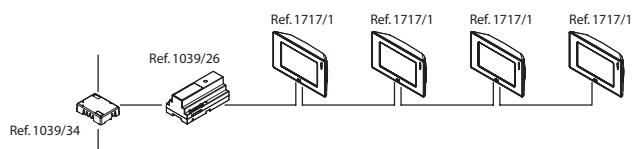
## INSTALLATION:

Wire no.	Cable colour	Wire no.	Cable colour
1	White-Orange	5	White-Blue
2	Orange	6	Green
3	White-Green	7	White-Brown
4	Blue	8	Brown



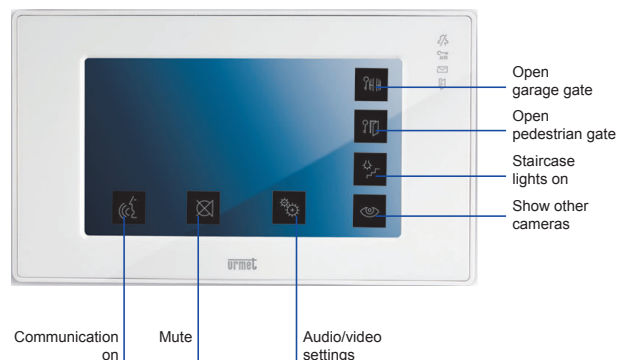
- Fix the bracket to the wall.
  - Connect to the terminal block on the bracket wires for panic, additional ringer, auxiliary power supply functions.
  - Configure the programming dip-switches following instructions in the system manual.
  - Connect a local power supply 1039/26 with CAT5 cable to a derived bus output of 4-user decoder 1039/34. From the power supply output connect a second CAT5 cable to the IN socket at the back of the monitor.
- Connect remaining apartment devices chain to the OUT socket at the back of the monitor.

Do not connect more than 4 monitors Ref. 1717/1 to a single local power supply.



- Connect the monitor with the cable at the back of the monitor to bracket connector J1.
- Hook the monitor on the bracket and lock it by moving the slide switch to the left.

## SPECIFICATIONS:



### Dimensions

metric

Imperial

(H x W x D)

129mm x 220mm x 35mm

5.08" x 8.66" x 1.38"

Protrusion from wall

metric

Imperial

9mm

0.35"

### TECHNICAL SPECIFICATIONS

Power supply voltage: 48-54V

Current consumption in standby mode: 140mA@54V

Current consumption during video call: 130mA@54V

Display: 7" TFT

Resolution: 480x234

Visual angle: 60°

Working temperature: 23° to 113°F (-5 / +45°C)

Panic button max. distance: 98 ft on AWG #20 (30m on 0.5mm²)

Additional ringer max distance: 98 ft on AWG #20 (30m on 0.5mm²)

Auxiliary power supply max distance: 98 ft on AWG #20 (30m on 0.5mm²)

### Ordering Information

Model	Description
1717/1	7" Colour touch screen



#### Canada

25 Interchange Way  
Vaughan, Ontario L4K 5W3  
Telephone: (905) 660-4655  
Fax: (905) 660-4113

#### U.S.A.

4575 Witmer Industrial Estates  
Niagara Falls, NY 14305  
Toll Free: (888) 660-4655  
Fax Toll Free: (888) 660-4113

Web page: <http://www.mircomgroup.com>

Email: [mail@mircomgroup.com](mailto:mail@mircomgroup.com)

NOT TO BE USED FOR INSTALLATION PURPOSES.

Distributed by:

ISO 9001:2008  
REGISTERED



CAT. 6610  
REV1