



Description

The NC-2000 is an advanced nurse call solution that couples mesh networking technology with ultrasonic signaling to accurately identify and respond to emergency events, forming the backbone of the highly reliable 802.15.4 wireless network. This network provides a self-forming, self-healing “mesh” type transport when routing messages to/from the MiCare Coordinator.

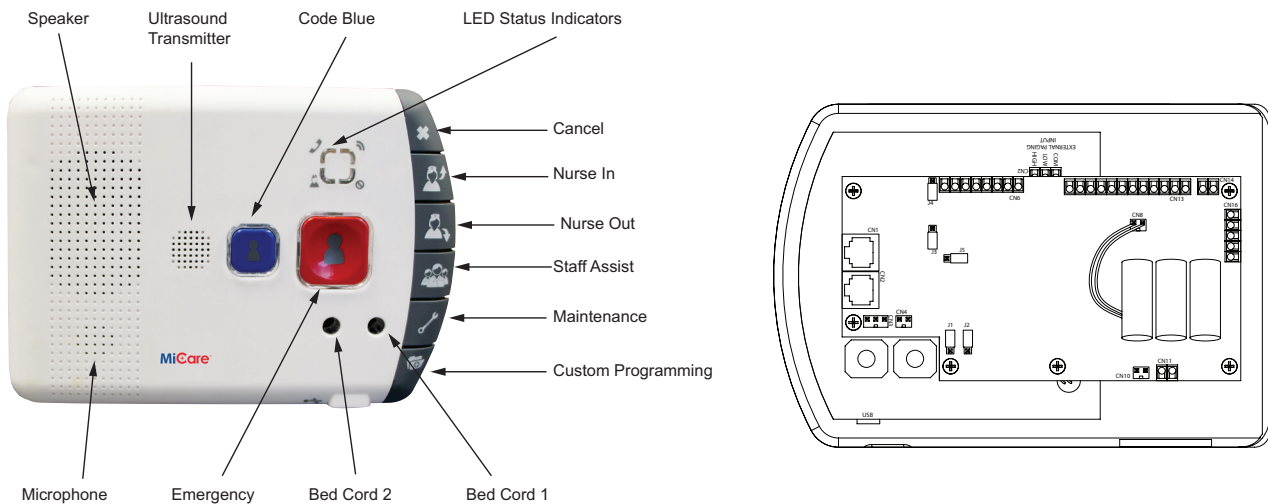
With its built-in telephony communication module, the NC-2000 provides two-way voice communication, in addition to the wireless network. This enhances the quality of care through situational assessment and awareness.





The NC-2000 Resident Unit connects with our Central Software to provide extended coverage, enhanced notifications, real-time visual displays, shift management, resident medical profiles, and customized rules by event, group, room or person.

Features

- Extended coverage using the beacons, pull cords and pendants.
- Unique identification with all networked units and associated peripherals.
- Two-way voice communication for situational assessment and awareness.
- Emergency, code blue, nurse presence, staff assist, maintenance, cancel, and custom buttons.
- Four supervised inputs for wired pull cords, environmental triggers, and personal monitors.
- Four dedicated outputs NO & NC for dome lights, locks, and other devices.
- Device heartbeat, external power, and line failure detection.
- Ergonomic design with germ-wipeable plastic on all devices.
- Easy installation for retrofit sites and new builds.
- Four Dome light support included.
- Overhead paging support included.
- Gently backlit emergency and code blue buttons.
- Two supervised unique 1/4" jacks for dual bed support.
- LED status indicators.
- Ultrasound transmitter to locate portable MiCare end devices in the room.
- Two bed cord jacks.

MiCare™ NC-2000 Unit Controls

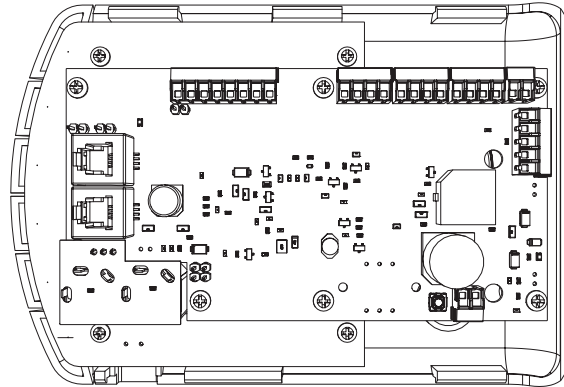
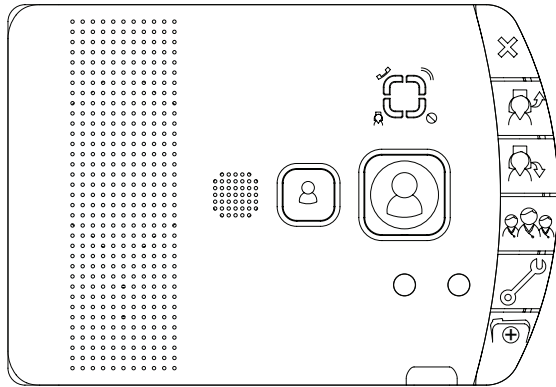


	Top Left	Off: The phone line is not enabled. Red blinking: The phone line is enabled but no phone is connected. Steady green: A phone is connected.
	Top Right	Red blinking: The Code Blue, Emergency, Staff Assist, Maintenance or Custom Programming buttons are pressed.
	Bottom Left	Green Blinking: The Patient Unit has not joined the network. Steady green: The Nurse In button is pressed. Red blinking for 10 seconds: The Nurse Out button is pressed.
	Bottom Right	Steady red: There is a fault, for instance when the unit loses its custom settings.
	Code Blue/ Emergency:	These buttons are used to launch an emergency event and will function dependant on the rule created on the Central Server.
	Cancel:	This button will end all active emergency events currently running and initiated from the unit.
	Nurse-In:	This option will function depending on the rule created on the Central Server and for the most part will be configured to enable a dome light to indicate the presence of a nurse in the resident room.
	Nurse-Out:	This option will function depending on the rule created on the Central Server and for the most part will be configured to disable the Nurse-In dome light.
	Staff Assist:	The Staff Assist option is used to notify additional staff care providers that their assistance is required. This is implemented via the rule configured on the Central Server
	Maintenance:	This option is used to notify the maintenance staff that a patient/resident room or area requires immediate attention (spills, faulty equipment, room clean up etc...)
	Custom Programming:	This button will be used as a listing option where residents can have access to a prerecorded message that states a schedule of events or eatery options.

Specifications

Standards:	UL 1069, 2560, CSA 22.2 #205, FCC Part 15/Part 68, Class "B", CS-03
Power Options:	<p>Input Power:</p> <ul style="list-style-type: none"> • Class 2 power supply, 24 VDC • Nominal current: 300 mA • Maximum current: 2.5 A <p>Paging Wattage Requirements:</p> <ul style="list-style-type: none"> • Minimum 125mWatt per unit. • 125 mW <p>Battery:</p> <ul style="list-style-type: none"> • A rechargeable battery can be purchased from Mircom to provide additional backup power to the Resident Unit.
Wireless Characteristics:	<p>ZigBee:</p> <ul style="list-style-type: none"> • Frequency: 2.4 GHz • Network type: 802.15.4 wireless mesh network • Range: 23 m (75 ft) with indoor line of sight • <p>Ultrasonic transmitter:</p> <ul style="list-style-type: none"> • Frequency: 40 kHz • Range: 9.1 m (30 ft)
Physical Characteristics:	<p>Faceplate: 221R Lexan Impact Strength: 260 ft-lbs/in² Actuator Material: Silicon Rubber Color: Off White Weight: 225g (8 oz) Dimensions: 114 mm x 162 mm x 64 mm (4.5" H x 6.375" W x 2.5" D) Mounting Centers: 3-9/32" Standard 3-gang, 2.5" Deep PVC Back Box Required Operating Temperature: 0° C to +50° C (32° F to 122° F)</p>
Input/Output Operating Specification	<p>Inputs:</p> <ul style="list-style-type: none"> • Wet contact pair, supplied voltage is nominally 3.6V (absolute maximum 5V). • Nominal current of 1.4mA (external loop closed) and an absolute maximum of 1.9mA. • Follow manufacturer's specifications for any attached equipment or wiring. • End of Line Resistor: 10K ohms +/- 5% ½W <p>Outputs:</p> <ul style="list-style-type: none"> • Dry contact pair, with both normally-open and normally closed contact pairs exposed. • Follow the voltage recommendations for "low-voltage wiring". • Supplies 24 V to power dome lights

Follow manufacturer's specifications for any attached equipment or wiring.



Ordering Information

Model	Description
NC-2000	Resident Unit
EC-111	Push/Bed Cord
NC-14DP	1/4" Dummy Plug
RB-MD-990	24V DC 6.5A Power Supply
TX3-PS24BB	Metal Cabinet for Power Supply
EC-104	Dome Light Single White
NC-4LED	Dome Light Multi (4 LED)
EOL-103	End of Line Resistor (10K)
NC-FLTR	DC-DC Converter that provides ground isolation for NC-2000

NOT TO BE USED FOR INSTALLATION PURPOSES.



Canada
 25 Interchange Way
 Vaughan, Ontario L4K 5W3
 Telephone: (905) 660-4655
 Fax: (905) 660-4113

U.S.A.
 4575 Witmer Industrial Estates
 Niagara Falls, NY 14305
 Toll Free: (888) 660-4655
 Fax Toll Free: (888) 660-4113

Distributed by:

