

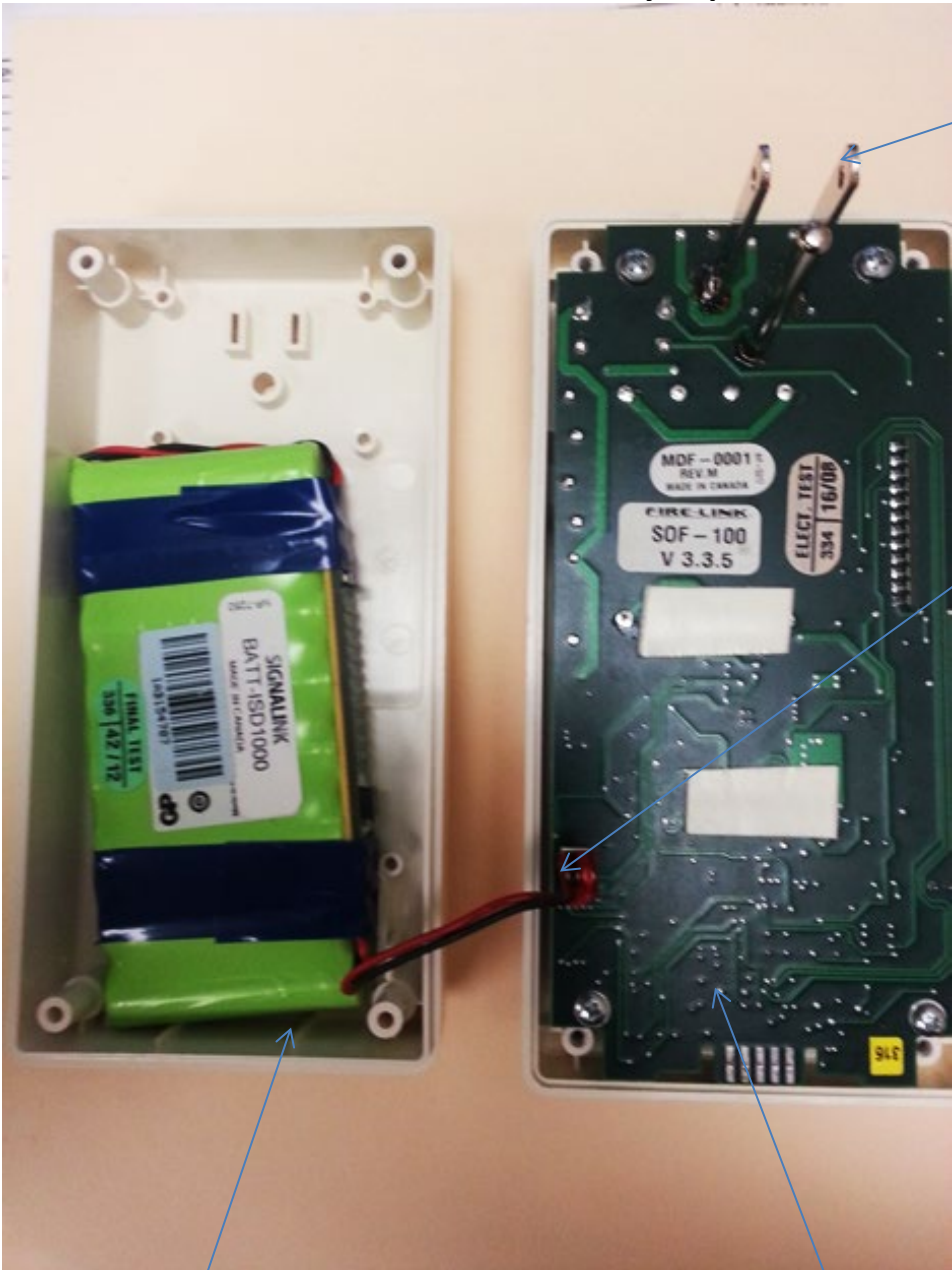
Firelink I Battery Replacement Procedure



Procedure:

- 1 From the underside of ISD Unit, remove the 4 Securing Screws.
- 2 Gently remove ISD (Bottom) Plastic Cover.
- 3 Disconnect (2 Pin Connector/Black & Red Wire Harness) from Circuit Board.

Firelink I Battery Replacement Procedure



AC Power Connector
Blades

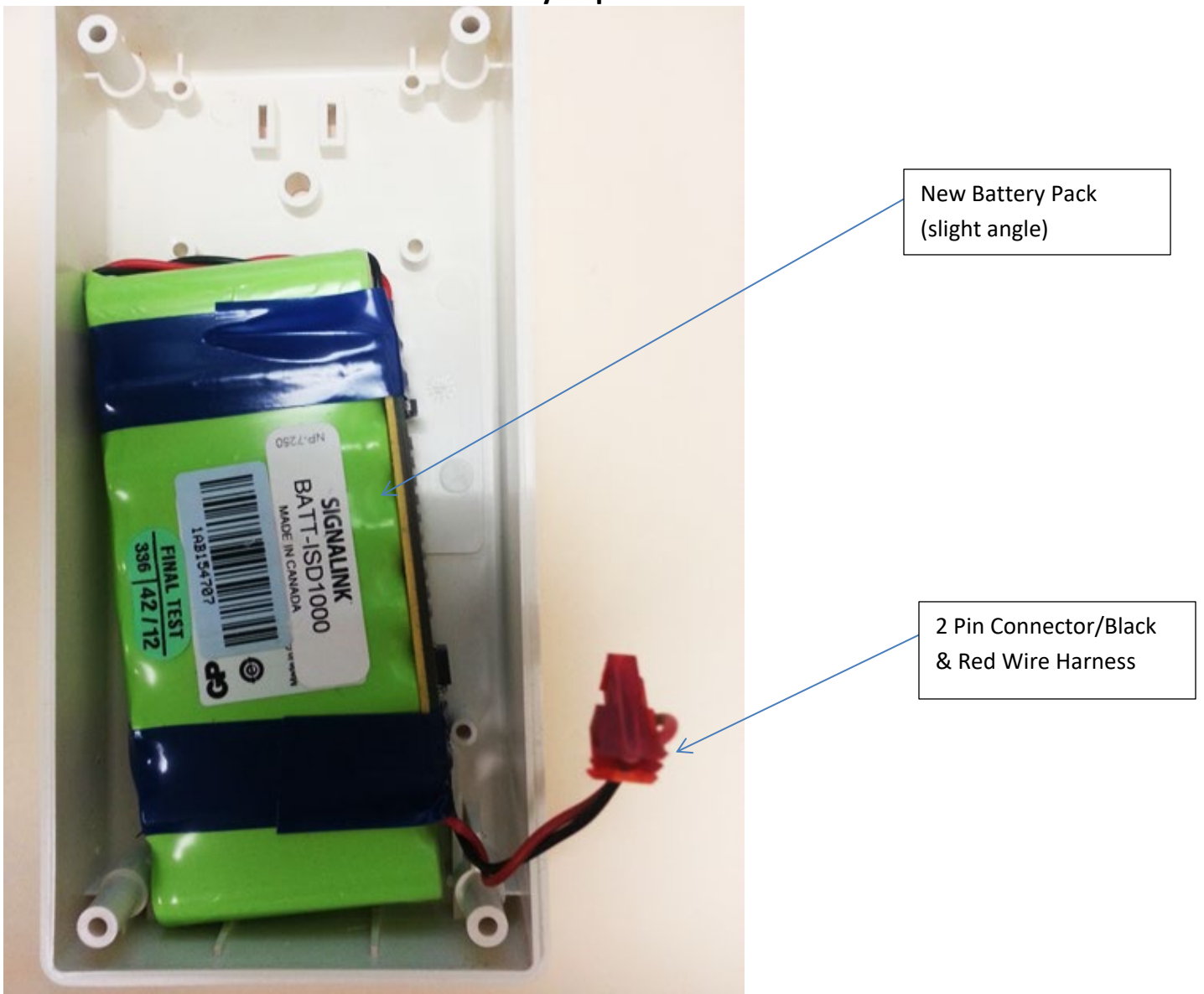
2 Pin Connector/Black &
Red Wire Harness

Note: connection position
for when reconnecting

ISD (Bottom) Plastic
Cover with Battery Pack

ISD (Top) Plastic Cover with
Circuit Board Assembly

Firelink I Battery Replacement Procedure



Procedure (cont.):

- 4 Remove Old Battery Pack (Note that Battery Pack is secured in place with 2 sided tape).
- 5 Insert/Replace New Battery Pack (at a slight angle) as shown (Note: strip of 2 sided tape provided).
- 6 Press Battery Pack firmly in order to adhere 2 sided tape to Plastic Cover.
- 7 Reconnect 2 Pin Connector/Black & Red Wire Harness to Circuit Board Note: 2 Pin Connector position for when reconnecting.
- 8 Replace Bottom Plastic Cover on to Top Plastic Cover (containing Circuit Board Assembly).
- 9 Replace the 4 Securing Screws.
- 10 ISD is now ready.