

Upgrade Chip for QMP-5100

This document describes how to remove the old SC-376 chip and install the replacement SC-376 chip on the QMP-5100 board.

Parts List

- Qty 1... SC-376 Upgrade Chip
- Qty 1... Extraction Tool
- Qty 1... Firmware label

A. Power down the unit

1. Disconnect the batteries from the unit.
2. Disconnect AC power going to the unit.

B. Remove the QMP-5100 board from the inner door

Caution: To prevent damage to the board, always hold it by the edges.

1. Remove the QMP-5100 from the inner door by unscrewing the 4 screws.
2. Remove the circuit board from the mounting plate by unscrewing the 6 screws on the back. The screws are shown in Figure 1.

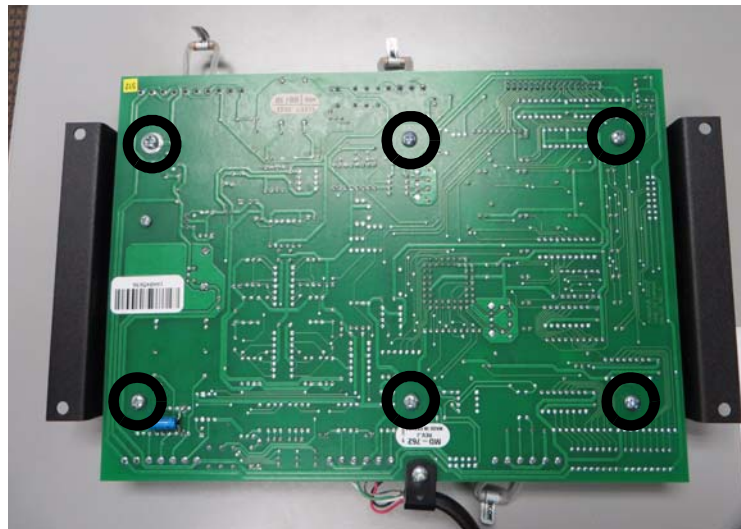


Figure 1 The 6 screws that attach the circuit board to the mounting plate

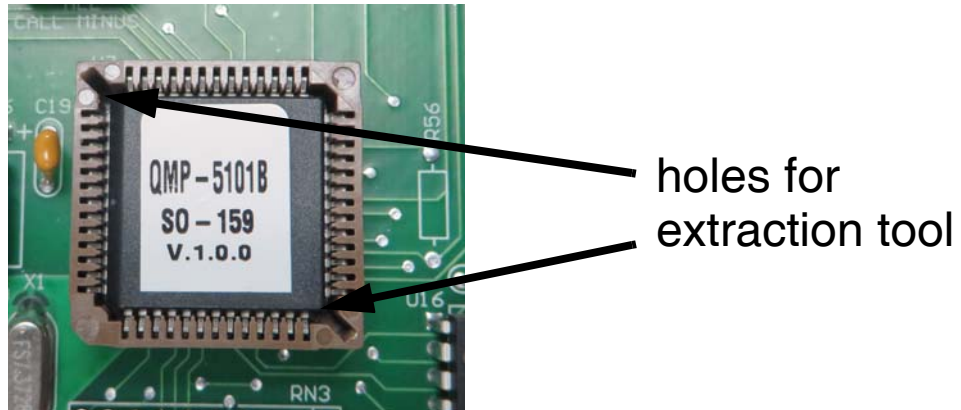
3. Carefully separate the circuit board from the mounting plate.

C. Remove the old chip from the QMP-5100 board

Caution: Observe anti-static precautions. To prevent damage to the board, always hold it by the edges.

1. Place the QMP-5100 on a flat surface.

The socket has two holes where you will insert the extraction tool.



2. Hold the extraction tool vertically, and insert it into one of the holes in the socket, so that it touches the bottom of the socket.



Figure 2 The extraction tool inserted into the socket

3. Pivot the tool until the corner of the chip lifts out of the socket.



Figure 3 The extraction tool lifting the chip out of the socket

4. Repeat steps 2 to 3 on the other hole.
5. Lift the chip out of the socket.

D. Insert the replacement chip

1. Align the dot on the top of the replacement chip with the arrow in the socket.

The chip can be inserted only one way. The dot on the chip must be on the same side as the arrow.

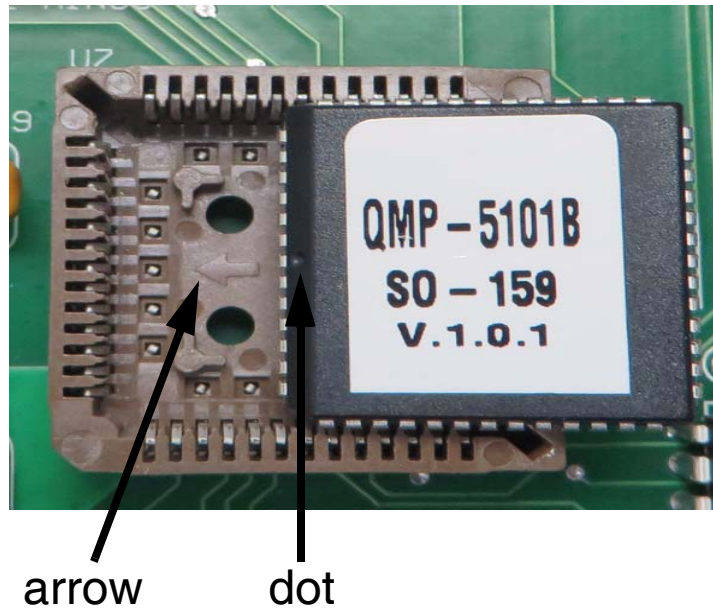


Figure 4 The dot on the chip must be on the same side as the arrow.

2. Push the replacement chip straight down into the socket until it snaps into place.
3. Attach the firmware label to the top of the circuit board beside the PTT terminal, in the location shown by the arrow:

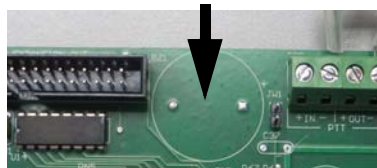


Figure 5 Attach the sticker here

E. Replace the QMP-5100

1. Remove any plastic covers that are stuck to the adhesive on the mounting board, and place them over the buttons on the circuit board.
2. Screw the QMP-5100 on the mounting plate.
3. Screw the metal plate to the inner door.

F. Power up the unit

1. Connect AC power to the unit.
2. Connect the batteries to the unit.