

UIMA2 Windows Driver Installation Instructions

Installing the Virtual COM Port Driver

Step 1: Download the STSW-STM32102STM32 Virtual COM Port Driver from the STMicroelectronics website:

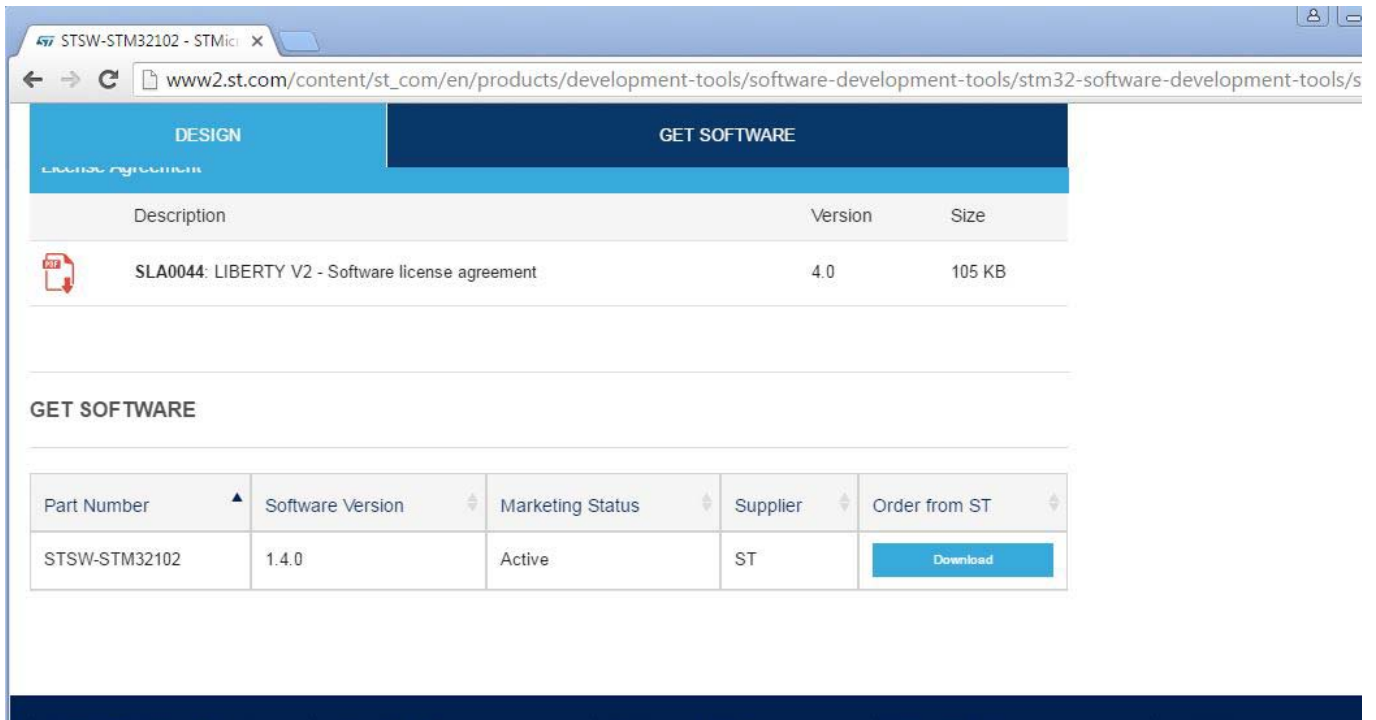
<http://www.st.com/web/en/catalog/tools/PF257938>

The screenshot shows the STMicroelectronics website interface for the product STSW-STM32102. At the top left is the ST logo with the tagline 'life.augmented'. A search bar and navigation links for 'Product Catalog', 'English', and 'Login' are at the top right. The breadcrumb trail indicates the path: Home > Development Tools > Software Development Tools > STM32 Software Development Tools > STM32 Utilities > STSW-STM32102. The product name 'STSW-STM32102' is displayed with an 'ACTIVE' status. Below this are buttons for 'Save to MyST', 'Share', and 'Print'. The main heading is 'STM32 Virtual COM Port Driver'. There are two main tabs: 'DESIGN' (highlighted in blue) and 'GET SOFTWARE'. Under the 'DESIGN' tab, there is a 'Legal' section with a 'License Agreement' link. Below this is a table with columns 'Description', 'Version', and 'Size'. The table contains one row: 'SLA0044: LIBERTY V2 - Software license agreement', '4.0', and '105 KB'. Under the 'GET SOFTWARE' tab, there is a table with columns 'Part Number', 'Software Version', 'Marketing Status', 'Supplier', and 'Order from ST'. The table contains one row: 'STSW-STM32102', '1.4.0', 'Active', 'ST', and a 'Get Software' button.

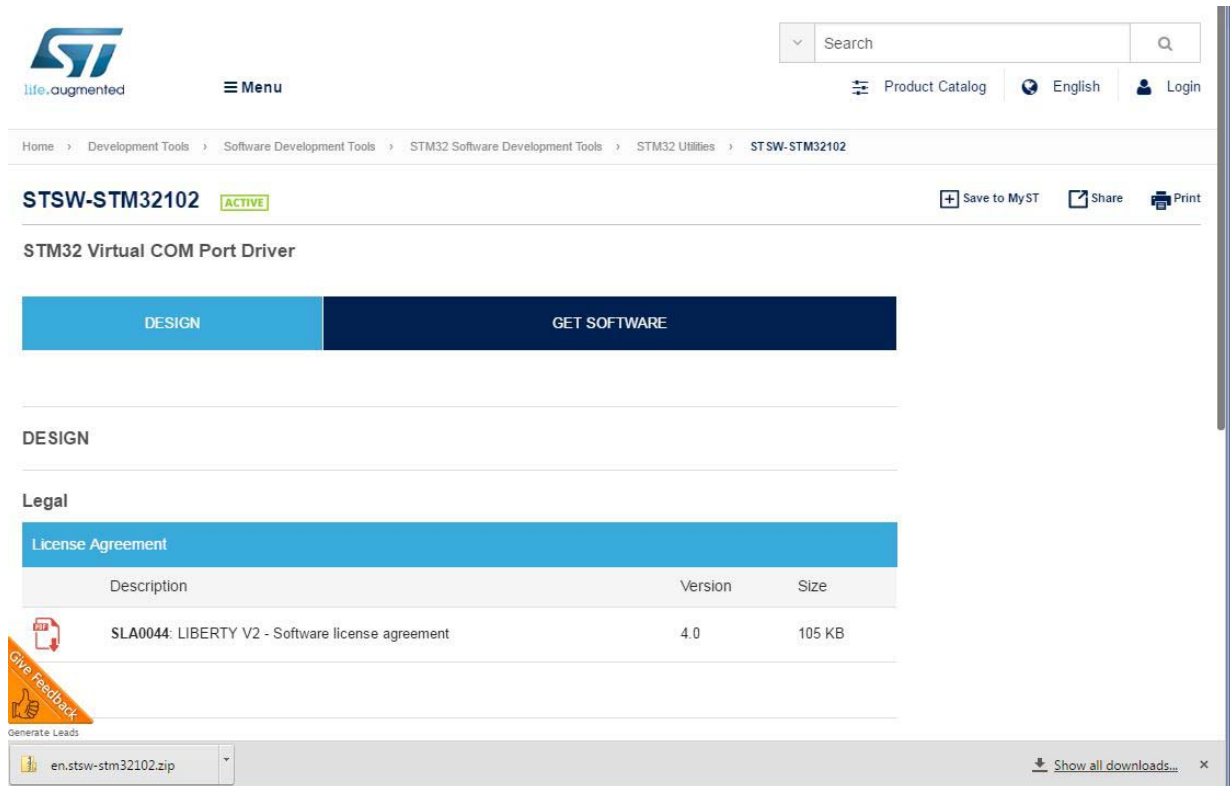
Part Number	Software Version	Marketing Status	Supplier	Order from ST
STSW-STM32102	1.4.0	Active	ST	Get Software

Click “Get Software”

Follow the instructions to sign in or log on.

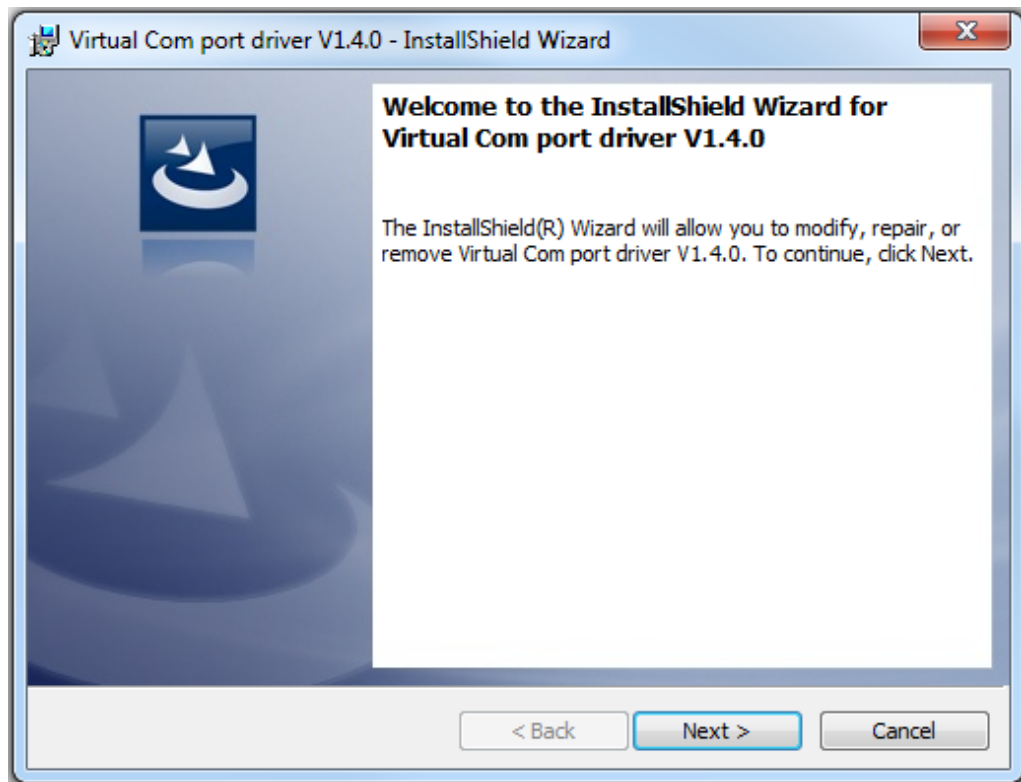
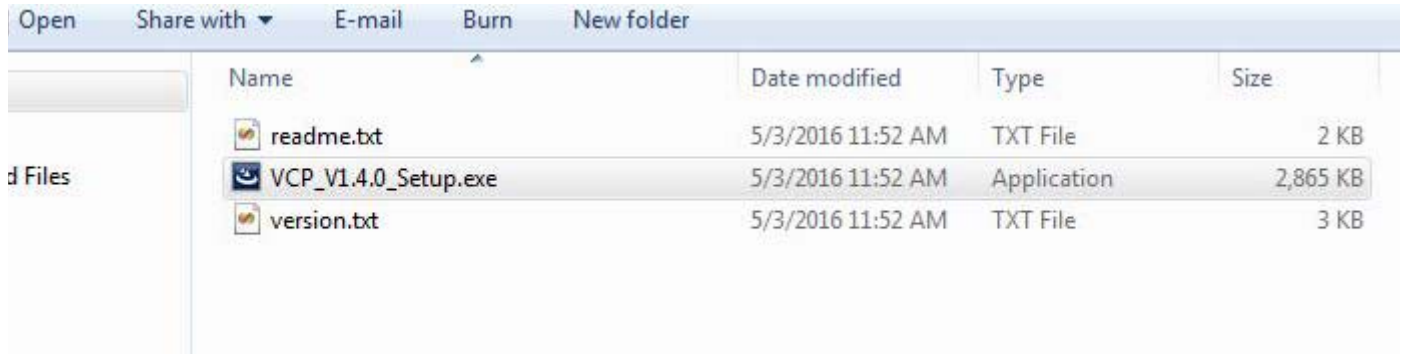


Select "Download". File is downloaded when you see the zipped file in the bottom left hand corner of the screen as seen below.

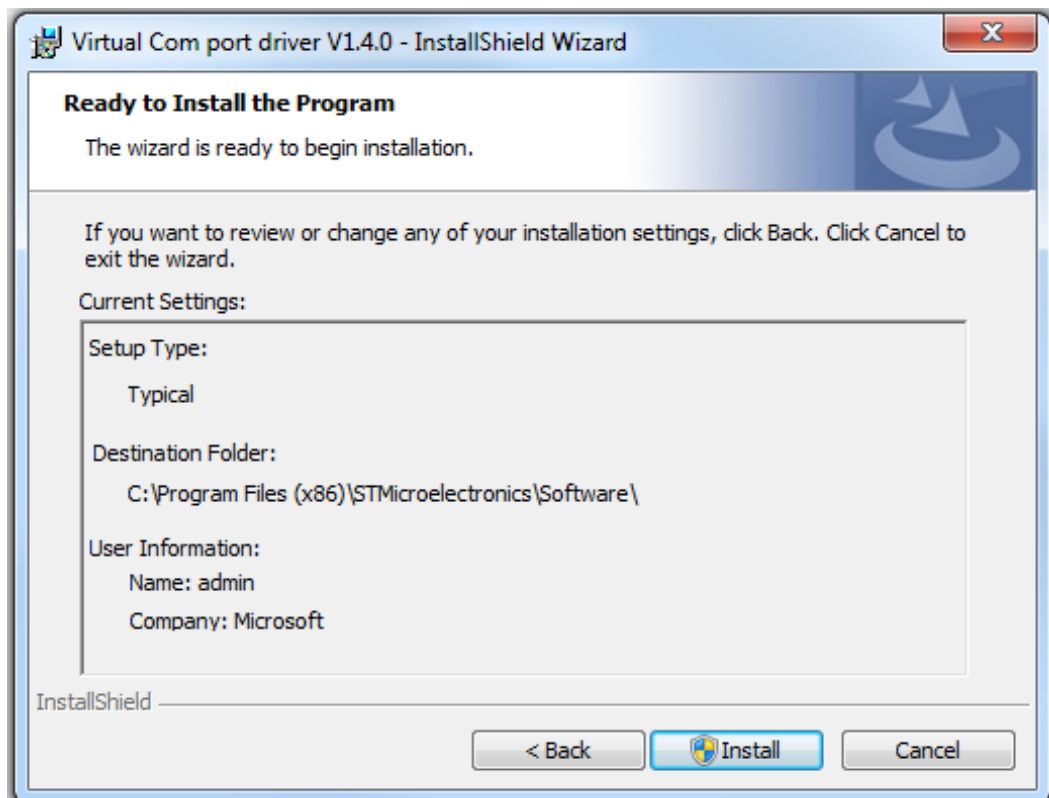


Step 2 Decompress the file, by right clicking on the en.stsw-stm32102.zip file and selecting Extract All.

Step 3 Right click on VCP_V1.4.0_Setup.exe file downloaded on your computer and CLICK on "Run as Administrator".

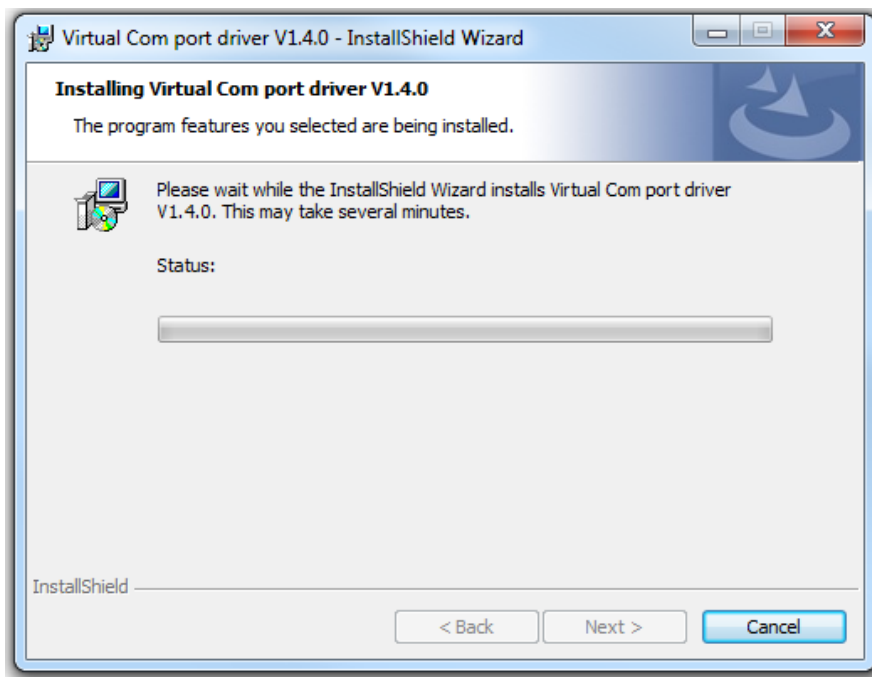


Click Next...



Click "Install".

Installation is in progress as shown below.



A window may pop up which states "Do you want to allow the following program from an unknown publisher to make changes to this computer?" Click Yes. Then click Finish.



CONNECT THE UMIA2 TO THE COMPUTER

Step 4 Plug in the UMIA2 into a USB port on your computer. If the driver is installed properly, the Devices and Printers list will show it. Click start, then Devices and Printers. The device will be displayed in the Unspecified section and is called "STMicroelectronics Virtual COM Port". NOTE: THE COM PORT WILL BE DISPLAYED IN BRACKETS as shown below; it is COM3 in this example.

