

TX3-CX-1 QUICK START

Contents of Kit:

TX3-CX-1
Mounting plate
Screwdriver for terminal block
2 screws for mounting plate
1 screw for securing body to mounting plate
USB flash containing manuals and software
USB cable for configuration

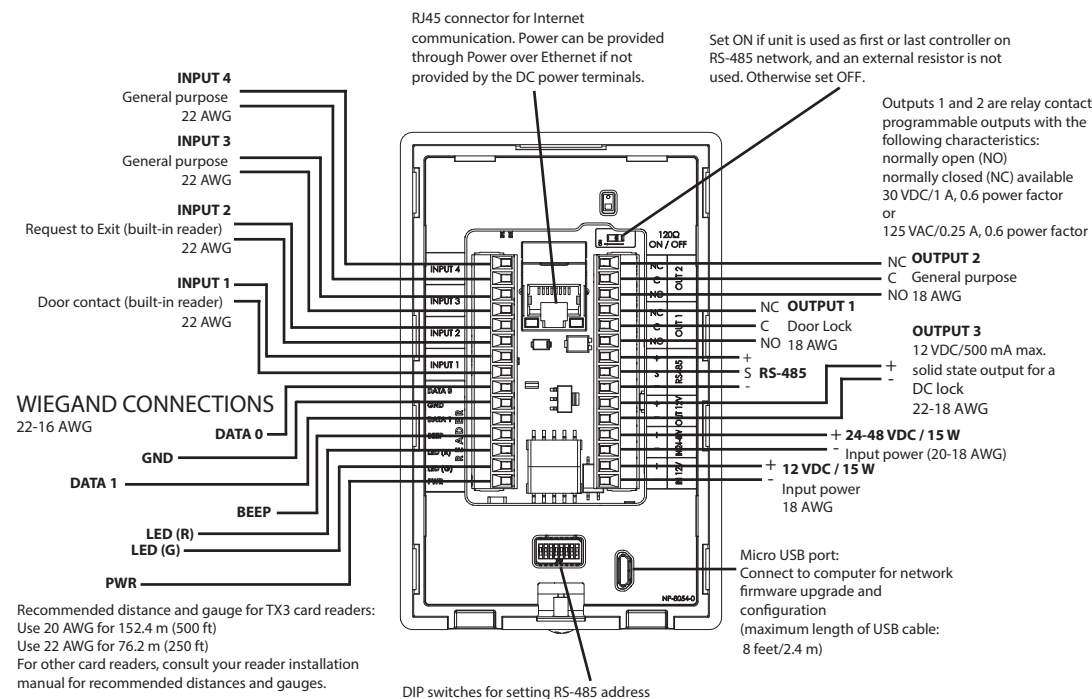
TX3-CX-1 dimensions:

122 mm x 79 mm x 41 mm
(4 25/32" x 3 3/32" x 1 39/64")

WARNING: Disconnect the power before wiring.

RS-485 wiring maximum length: 1219.2 m (4000 ft)
PoE maximum length: 100 m (328 ft)
Wiegand connection maximum length: 152.4 m (500 ft)

Note: TX3-CX-1 has a tamper feature. If it is powered on and not mounted on the mounting plate, a tone sounds. The tone stops sounding when it is mounted.



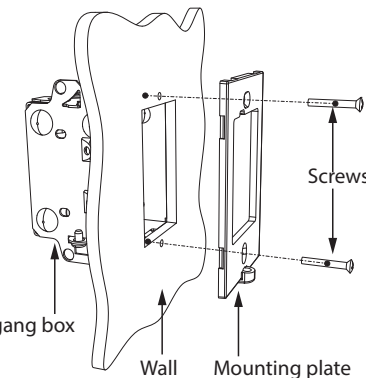
Recommended distance and gauge for TX3 card readers:
Use 20 AWG for 152.4 m (500 ft)
Use 22 AWG for 76.2 m (250 ft)
For other card readers, consult your reader installation manual for recommended distances and gauges.

For more information, see LT-6618 on the USB flash.

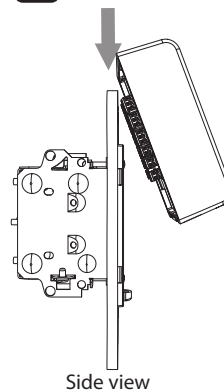
Mircom Tech Support: 1-888-MIRCOM5 (888-647-2665) techsupport@mircom.com

MOUNTING

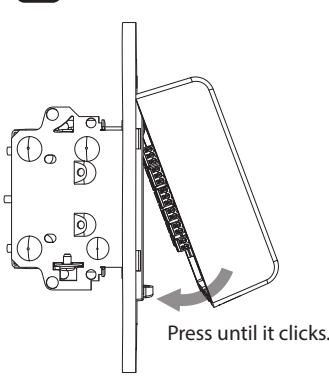
1



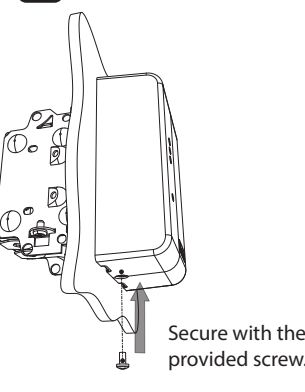
2



3



4



DIP Switches

Use DIP switches 1-6 to set the RS-485 network address. Leave DIP switch 7 off. Set DIP switch 8 off to get an IP address from the DHCP server. Set DIP switch 8 on to set a fixed IP address using the TX3 Configurator software. Switches are numbered 1-8 from left to right.



RS-485

Shielded or unshielded Cat 5 cable

