



**OPEN GRAPHIC
NAVIGATOR**

Open Graphic Navigator

Annunciation Monitoring Control Software



Version 3 Demo Quick Start Guide

Table of Contents

Installation.....	4
Hardware Prerequisites	4
Operation	9
Starting OpenGN	9
Login to OpenGN	9
Main Display Window	10
Main Functions	11
Navigating the Surveillance Area	12
View Option Buttons	13
Using the List Area	14
Action Buttons	15
Login Window	15
Configuration.....	16
The Configuration Window	16
Configuration Function Buttons	18
Tools	18
Placing Devices	19
Troubleshooting / FAQ	20

Installation

Thank you for downloading OpenGN. Follow these steps to get started.

Hardware Prerequisites

- Option 1: Comark Xeon Computer
 - CPU - Intel Xeon E5645@2.4 GHz (12 Cores)
 - RAM - 32 GB
 - GPU - ATI FirePro V (FireGL V) graphics accelerator - 2 GB / 6 GB
 - OS - Windows 7 Pro 64-bit
- Option 2: Generic Xeon Computer
 - CPU - Intel Xeon E31225@3.1 GHz (4 Cores)
 - RAM - 16 GB
 - GPU - NVidia Quadro 2000 - 1 GB / 8 GB
 - OS - Windows 7 Pro 64-bit



Attention: You must be logged in as an administrator to install OpenGN.

To install OpenGN

1. Do one of the following:
 - From the USB key:
 - a. Insert the USB key into the computer.
 - b. Double-click the **OGN-Client** icon.
 - From the downloaded file:
 - a. Double-click the downloaded file to extract it.
 - b. Double-click the **OGN-Client** icon in the extracted folder.
 - If you see a message asking you to install additional software, always choose to install it.

2. On the first screen, click **Install**.

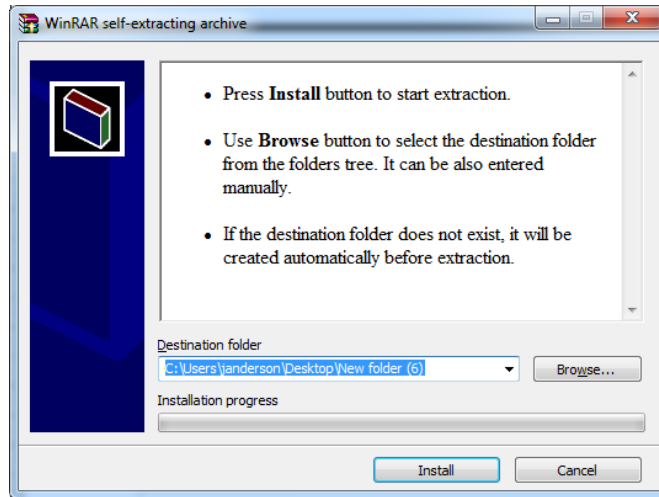


Figure 1 Install screen

The **OpenGN Welcome** screen appears.

3. Click **Next**.

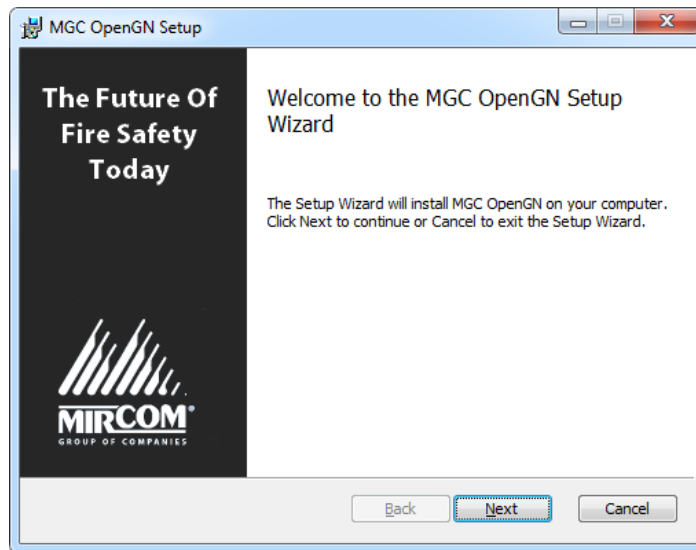


Figure 2 Welcome to the MGC OpenGN Setup Wizard

4. Select the checkbox to accept the agreement, and then click **Next**.

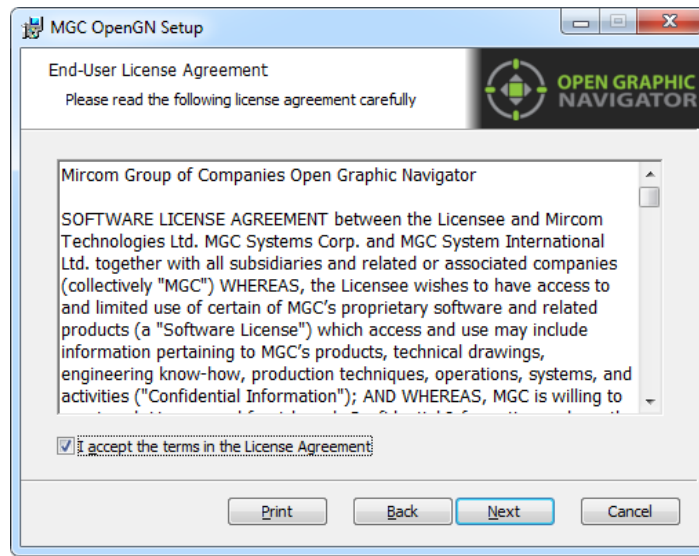


Figure 3 End-User License Agreement

5. In the Demo Options window, select **Main** and select **Install demo database**. Then click **Next**.

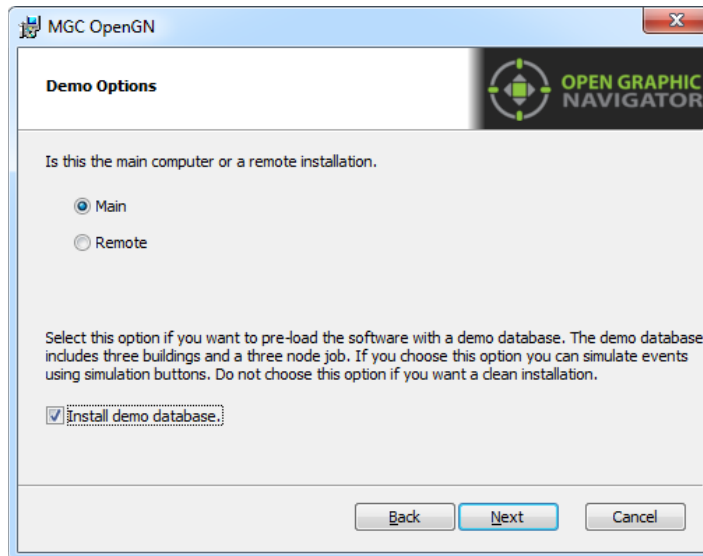


Figure 4 Demo Options

6. In the Choose Setup Type window, click **Typical**.

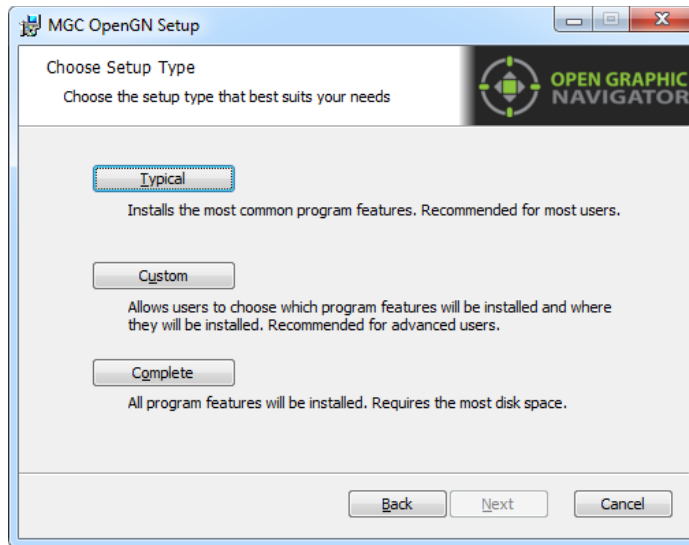


Figure 5 Choose Setup Type

7. Click **Install**.

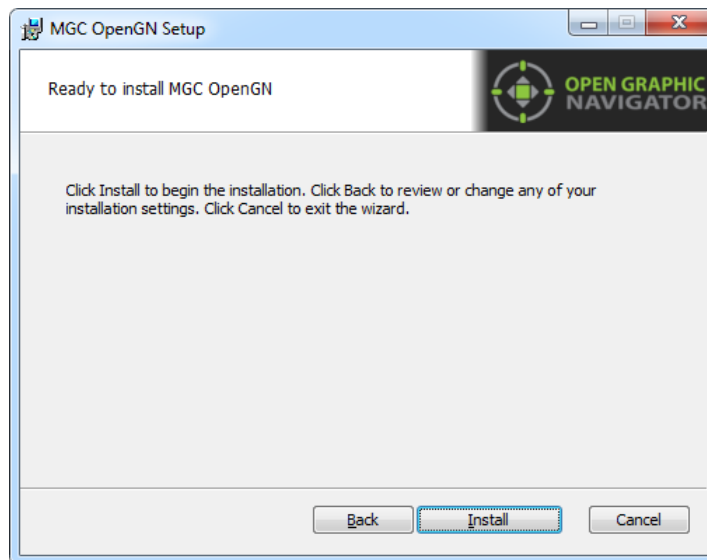


Figure 6 Ready to Install OpenGN

OpenGN is installed.

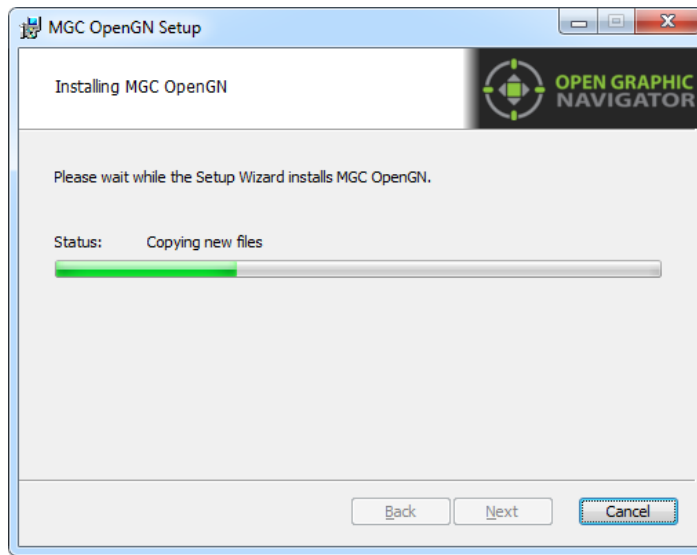


Figure 7 Installing MGC OpenGN

8. Uncheck **Launch Open Graphic Navigator**, and then click **Finish**.

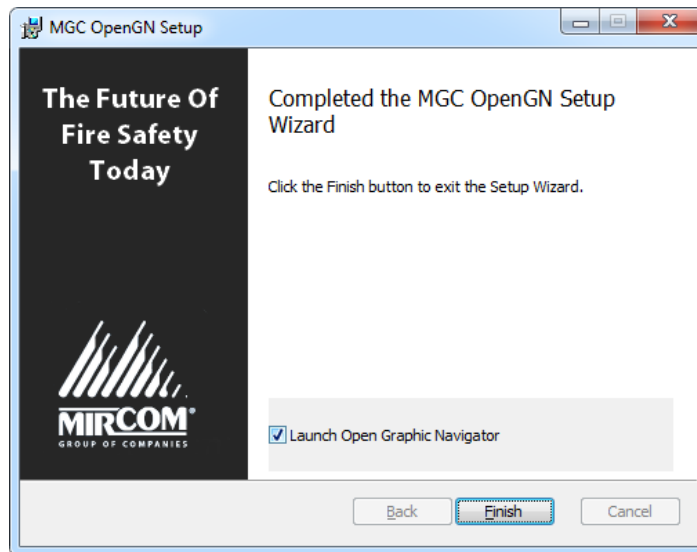


Figure 8 Completed the MGC OpenGN Setup Wizard

Operation

Starting OpenGN



Attention: Before launching OpenGN insert your CodeMeter USB key into a USB port on the computer that is running OpenGN.

If you do not do this, OpenGN will run in a limited functionality DEMO mode. Additionally, do not remove the USB key while OpenGN is running. Issues arising from doing so will not be supported.

To start OpenGN

- Do one of the following:
 - Double-click the shortcut on your desktop
 - Click **Start > All Programs > Mircom Group of Companies > Open Graphic Navigator > OpenGN**
 - Browse to the location where the application was installed, and then double-click **.exe**.

In Windows 7 64 bit, the default location is

C:\Program Files (x86)\Mircom Group of Companies\Open Graphic Navigator

Login to OpenGN

When you start OpenGN, the Login window appears.

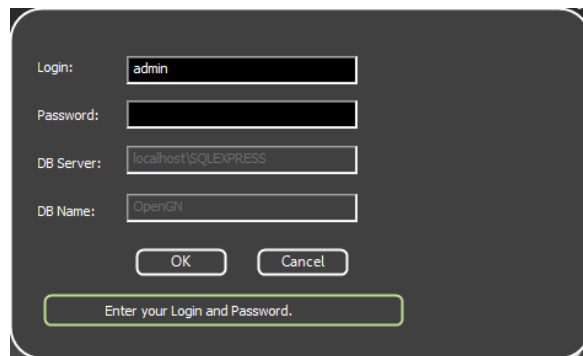


Figure 9 Login Window

To Log in to OpenGN

1. Click a user in the **Login** pulldown menu.
2. Type the password.



Note: If you are starting OpenGN for the first time, the password is blank.

3. Click **OK**.

The Main Display screen appears.



Note: You can change your password only after you have logged into OpenGN.

Main Display Window

After logging in to OpenGN you will see the Main Display window. All networked device information appears in the Surveillance Area, depending on the configuration and viewing mode. The following figure describes the different areas of the Main Display window.

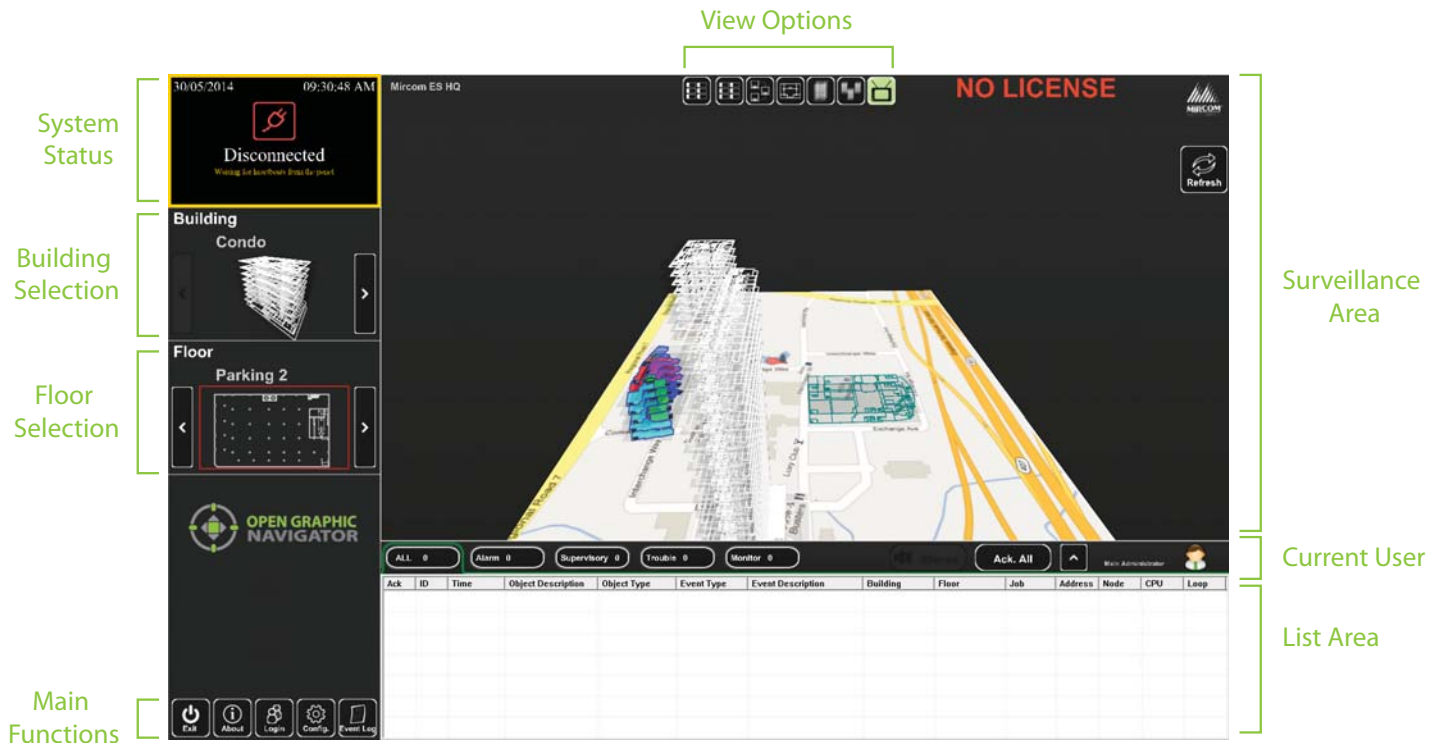







Figure 10 Main Display Screen

- System Status** Displays status information such as the connection state and operation progress.
- Building Selection** Cycles through the buildings in the campus.
- Floor Selection** Cycles through the floors of the selected building, the **Control Switches**, and the **Unplaced Devices**.
- Main Functions** Contains the **Exit**, **About**, **Login**, **Config**, and **Event Log** buttons.
- View Options** Changes how the information appears in the Surveillance Area. The options are **Switches**, **Network**, **2D View**, **Building View**, **Campus View** and **Auto-watch View**.
- Surveillance Area** Displays a close-up of the selected building or floor plan.
- Current User** Displays the current user.
- List Area** Manages all active events.

Main Functions

The following table describes the Main Function buttons located in the bottom left corner of the Main Display window.

Main Function Button	Description
	Exits OpenGN.
	Displays the Version number, License Type, copyright information, CodeMeter stick License Type information, and company contact information.
	Displays the Login window.
	Displays the Configuration window.
	Displays a printable log report.



Attention: Only users with Technician access or higher can use the Exit and Config buttons.

Navigating the Surveillance Area

The Surveillance Area displays a two or three dimensional view of Buildings and Floors. You establish a view in the Surveillance Area by:

- Selecting a building using the **Building Selection** tool.
- Selecting a floor using the **Floor Selection** tool.
- Selecting one of the **View Options**.

You can navigate the Surveillance Area with the pointer, keyboard or touchscreen.

To navigate the Surveillance Area with a pointer

Drag	Click and drag the building or floor plan in any direction.
Rotate	Right-click as you drag the pointer left or right. (Building/Campus view only)
Tilt	Right-click as you drag the pointer up or down. (Building/Campus view)
Zoom	Depending on your mouse, there are two zoom methods: <ul style="list-style-type: none">• Scroll the wheel up or down.• Click the middle mouse button and move the mouse up and down.
Reset View	Right-click the Surveillance Area, and then select Reset View . (2D View only)

To navigate the Surveillance Area with a keyboard

Drag	Press the arrow keys.
Rotate	Hold down the Shift key and press the left and right arrow keys. (Building/Campus view)
Tilt	Hold down the Shift key and press the up and down arrow keys. (Building/Campus view)
Zoom	Press the + and - keys to zoom in or out.
Reset View	Press the Enter key.

To show the rotation sliders on a touchscreen

- Click **Config. > Settings > Display Settings > Show Rotation Sliders**.







To navigate the Surveillance Area with a touchscreen

Tilt	Press the vertical rotation slider.
Navigate screen	Press the screen and drag your finger up, down, left and right.
Rotate	Press the horizontal rotation slider in the direction you want to rotate.

View Option Buttons

Table 1 describes the six View Option buttons located at the top of the Surveillance Area.

Table 1 View Option button descriptions

View Option Button	Description
 Switches	Displays a visual representation of an annunciator. You can place fire control switches here. If it is configured to meet listing agency requirements, then you can perform control functions here.
 Network View	Displays a list of all imported jobs.
 2-D View	Displays a 2D representation of the selected floor of the selected building.
 Building View	Displays a 3D representation of the selected Building.
 Campus View	Displays a 3D representation view of all buildings in the selected Campus.
 Auto-watch View	Displays a rotating three dimensional campus view of all the buildings and floors.

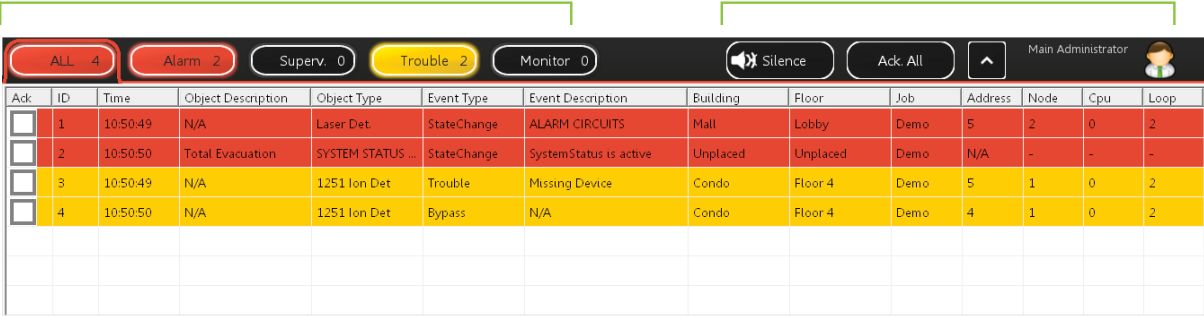
Using the List Area

The List Area displays all active events.

To quickly acknowledge the event

1. Check the corresponding box. For more information on managing events see Chapter 6 of the OpenGN Administration Guide.

Event List Sorting Tabs
Action Buttons and Current User



The screenshot shows the Event List interface. At the top, there are sorting tabs: ALL (4), Alarm (2), Superv. (0), Trouble (2), and Monitor (0). To the right are action buttons: Silence, Ack. All, and a user icon for Main Administrator. Below the tabs is a table with the following data:

Ack	ID	Time	Object Description	Object Type	Event Type	Event Description	Building	Floor	Job	Address	Node	Cpu	Loop
<input type="checkbox"/>	1	10:50:49	N/A	Laser Det.	StateChange	ALARM CIRCUITS	Mall	Lobby	Demo	5	2	0	2
<input type="checkbox"/>	2	10:50:50	Total Evacuation	SYSTEM STATUS ...	StateChange	SystemStatus is active	Unplaced	Unplaced	Demo	N/A	-	-	-
<input type="checkbox"/>	3	10:50:49	N/A	1251 Ion Det	Trouble	Missing Device	Condo	Floor 4	Demo	5	1	0	2
<input type="checkbox"/>	4	10:50:50	N/A	1251 Ion Det	Bypass	N/A	Condo	Floor 4	Demo	4	1	0	2

Figure 11 List Area

Event List

Displays a color coded list of active events with the following information:

- Acknowledge
- Event ID
- Event Timestamp
- Device Description
- Device Type
- Event Type
- Event Description
- Building
- Floor
- Job
- Device Address
- Node
- CPU
- Loop

Event List Sorting Tabs

The event list can be sorted to show events of the following types:





- All
- Alarm
- Supervisory
- Trouble
- Monitor

Action Buttons and Current User

Contains the **Silence\Unsilence, Acknowledge All, Expand\Collapse List** buttons, and displays the Current User.

Action Buttons

Table 2 Action Buttons

Action Buttons	Description
 Acknowledge All	Acknowledges all events under the selected sorting tab. The alarm tone from the computer stops.
 Silence	Silences the alarm tone, if there is an alarm tone. This silences only the alarm on OpenGN, not the alarm on the Fire Alarm Control Panel.
 Unsilence	Makes the alarm tone audible, if it was previously silenced.
 Expand\Collapse List	Expands or collapses the List Area.

Login Window

The Login window lets you switch users or change the password of the current user.

To access the Login window after OpenGN has started

- Click the **Login** button in the Main Functions area of the Main Display window (in the lower left corner of your screen).

To change the current user

1. Select the user from the pulldown menu.
2. Type the password.
3. Click **OK**.

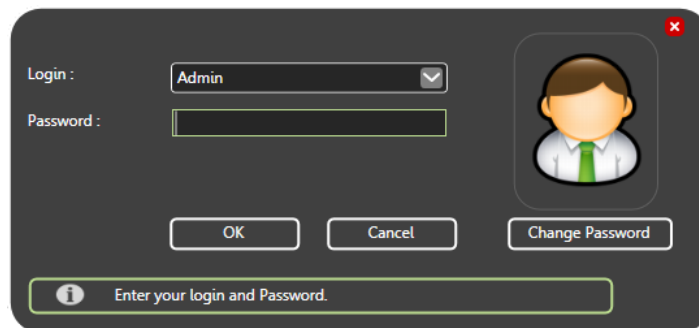


Figure 12 Login Window

Configuration

The Configuration Window

The Configuration window is the area where you set up your buildings and floor plans.

To access the Configuration window

1. Click the **Config** button in the Main Display window.
2. Click **OK**.

In the Configuration window, there are two different views available: the 2D view of the floors and the Campus view. By default, the Configuration window displays the 2D view of the selected Floor and Building.

2D View

In the 2D view, you can place objects by dragging them from the Job Tree to the Surveillance Area. For more information see Chapter 5.0 Configuring Objects and Zones.

Campus View

You can move, rotate, or rescale the Campus View buildings. Use this view to adjust the placement and layout of the buildings that are networked together in your fire protection system.

To...	Do this...
Reposition buildings	Click and drag
Enlarge or shrink a building	Mouse over a building and use the mouse scroll wheel, or click and drag the edge of the building
Rotate a building	Click and drag the corner of the building

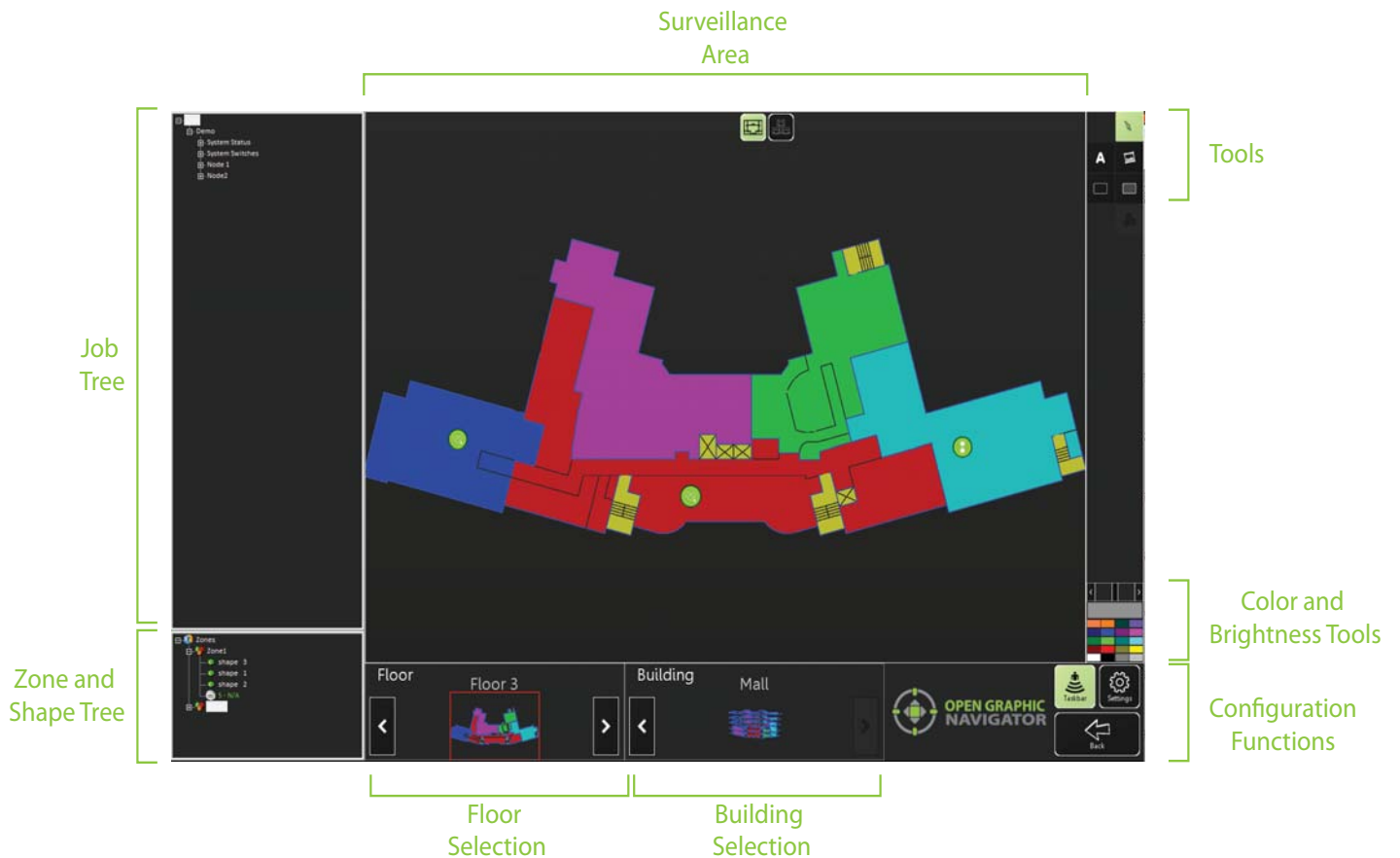


Figure 13 Configuration Window




The Configuration window has the following parts:

- Job Tree** Shows all devices appear in the Job Tree in the following hierarchy: Job > Node > CPU > Loop > Object.
- Zone and Shape Tree** Lists all zones and the shapes assigned by zone. Unassigned shapes are listed in the unassigned tree.
- Floor Selection** Cycles through the floors of the selected building. The first floor in the list shows all unplaced objects.
- Building Selection** Cycles through the buildings in the campus.
- Surveillance Area** Displays the requested information from the **Building Selection**, **Floor Selection** in 2D View. Only 2D navigation functions are available on the Configuration window Surveillance Area.
- Tools** Contains the **Selection**, **Text**, **Icon**, **Filled Rectangle** and **Empty Rectangle** buttons.
- Color and Brightness Tools** Changes the color of a building or zone. The currently selected color is shown in the large box immediately above the group of colors. Use the slider bar to change the brightness and opacity.
- Configuration Functions** Contains the **Taskbar**, **Settings**, and **Back** buttons. For more information see Table 3.

Configuration Function Buttons

The Configuration Function buttons are located in the bottom right hand corner of the Configuration window.

Table 3 Configuration Function button descriptions

Configuration Function Button	Description
 <p>Taskbar</p>	Shows the Windows taskbar.
 <p>Settings</p>	<p>Configures the following settings:</p> <ul style="list-style-type: none"> • Panel Settings • Campus Settings • Display Settings • Icon Settings • Object Type Settings • Event Log Settings • E-mail Notification Settings • Database Settings • Connection Settings • Users Settings <p>For more information on configuring OpenGN, see Chapter 4 of the Administration Guide.</p>
 <p>Back</p>	Takes you back to the Main Display window.

Tools

The Tool buttons are located in the top right corner of the Configuration window.

Table 4 Tool button descriptions

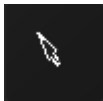


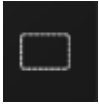

Tool Button	Description
 <p>Selection</p>	Selects items in the Surveillance Area.
 <p>Text</p>	Places new text or edits existing text in the Surveillance Area. You can change the color of the text by clicking the desired color in the Color and Brightness Tools section.
 <p>Add Image</p>	Imports and places an image in the Surveillance Area.

Table 4 Tool button descriptions (Continued)

Tool Button	Description
	<p>Empty Rectangle</p> <p>Lets you draw an empty rectangle that you can assign to a new or existing zone. You can change the color of the rectangle by clicking the desired color in the Color and Brightness Tools section.</p>
	<p>Filled Rectangle</p> <p>Lets you draw a filled rectangle that can you can assign to a new or existing zone. You can change the color of the rectangle by clicking the desired color in the Color and Brightness Tools section.</p>

The following list identifies what features are disabled in the OpenGN demo.

Panel Settings	Delete a job	Disabled for demo
	Import XML	Disabled for demo
Database Setting	Backup	Disabled for demo
	Restore	Disabled for demo
Email Notification	Email Notification	Disabled for demo

Placing Devices

You can define individual devices or groups of devices and their placement on the map.

- Right click on a device, loop or CPU to see the following menu:

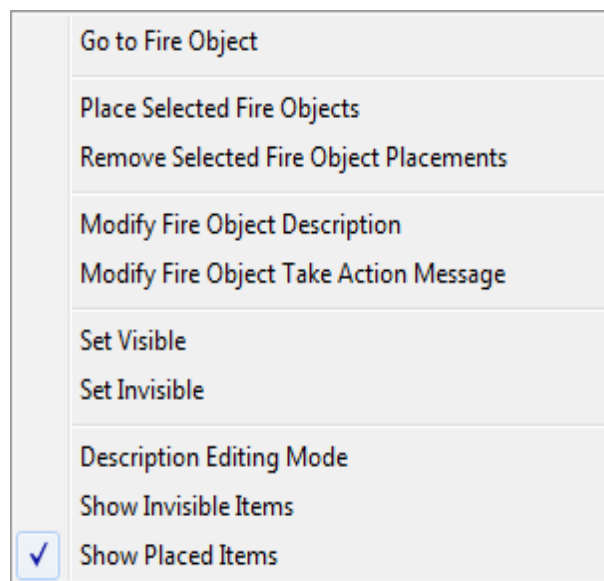


Figure 14 Fire Object Options

Go to Fire Object	Finds a placed or unplaced object.
Place selected Fire Objects	Adds an object to the floor plan. Unplaced objects are red in the job tree, and placed objects are green.
Remove selected Fire Object placements	Removes any object from the floor plan.
Modify Fire Object Description	Modifies the description.
Modify Fire Object Take Action Message	Modifies the Take Action message. This message describes the actions you need to take when an event occurs.
Set Visible	Makes invisible objects visible.
Set Invisible	Makes the object invisible.
Description Editing Mode	Lets you rename multiple objects at once.
Show Invisible Items	Shows all the invisible objects in the Job Tree. Invisible objects are grey in the Job Tree.
Show Placed Items	Reserved for future use.

Troubleshooting / FAQ

Q: How do I resynchronize OpenGN if the system goes down?

A: If the panel goes down or if OpenGN quits unexpectedly, follow these instructions.

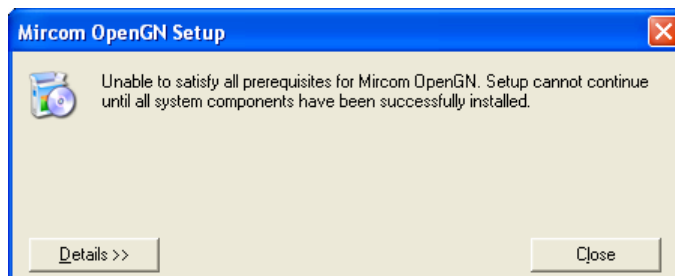
1. Close OpenGN if it is open.
2. Close the XML Adapter.
3. Restart the computer.
4. Start the XML Adapter.
5. Start OpenGN.
6. Perform a network restart on the panel.

OpenGN should reconnect to the panel and receive any events that the panel sent while OpenGN was down.

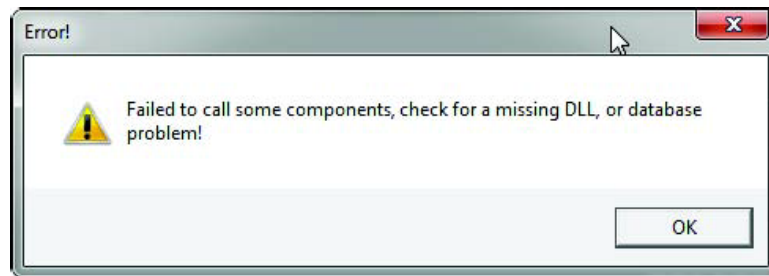
Q: Why is the text on the screen jumbled?

A: This is a known issue with some Intel graphics cards. Update your drivers to solve this issue.

Q: Why does my installation fail and I receive this message?



- A:** Click the **Details** button. If you see the message **Administrator permissions are required**, install the application using a user profile that has Administrator rights.
- Q:** When I attempt to run OpenGN why do I receive the following message?



- A:** Ensure that you are running OpenGN with Administrator rights.
- Q:** Why is OpenGN telling me that I only have a Demo version when I have purchased a licensed version?
- A:** Ensure that your Codemeter USB key has been programmed and is connected to the computer running OpenGN.



OPEN GRAPHIC NAVIGATOR

Canada
25 Interchange Way
Vaughan, ON L4K 5W3
Tel: (888) 660-4655
Fax: (905) 660-4113

U.S.A.
4575 Witmer Industrial Estates
Niagara Falls, NY 14305
Tel: (888) 660-4655
Fax: (888)-660-4113

Technical Support
North America Only
Tel: (888) Mircom5
(888) 647-2665
International
Tel: (905) 660-4655

© MGC 2016
Printed in Canada
Subject to change without prior notice
<http://www.mircomgroup.com/opengn>