

# MD-750 Replacement Core Board

This document describes how to remove the old core board and install the replacement MD-750 core board on the main board.

## A. Power down the main board

1. Disconnect the batteries from the board.
2. Disconnect AC power going to the board.

## B. Remove the old core board

**Caution:** To prevent damage to the boards, always hold them by the edges.

1. Remove the screw on the old core board.

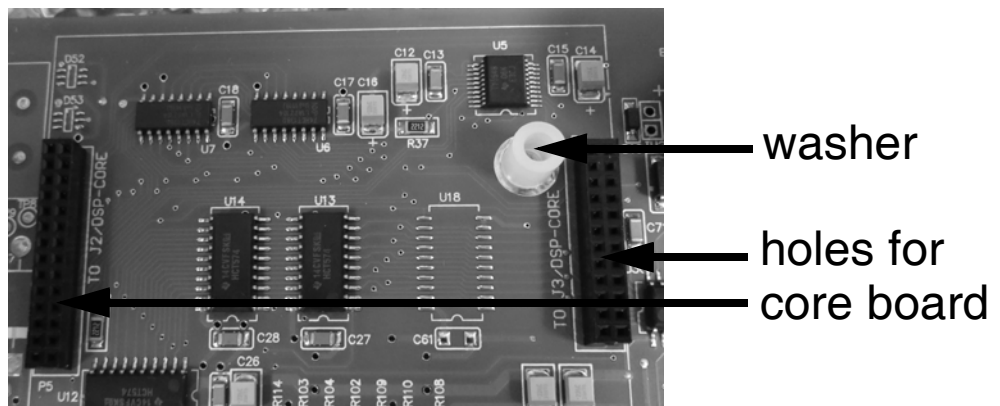


2. Gently wiggle the old core board (pull one side and then the other in a repetitive motion) until it is free of its connectors.

## C. Attach the replacement MD-750 core board

**Caution:** To prevent damage to the boards, always hold them by the edges.

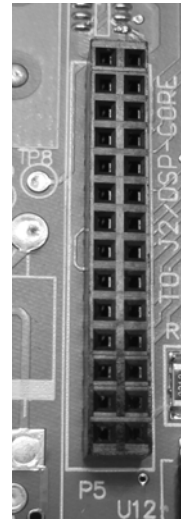
1. Remove the replacement MD-750 core board from the anti-static bag.
2. On the main board, align the washer over the screw hole.



The replacement MD-750 core board has 12 sets of pins on the right side and 14 sets of pins on the left side. These pins go in the holes on the main board.



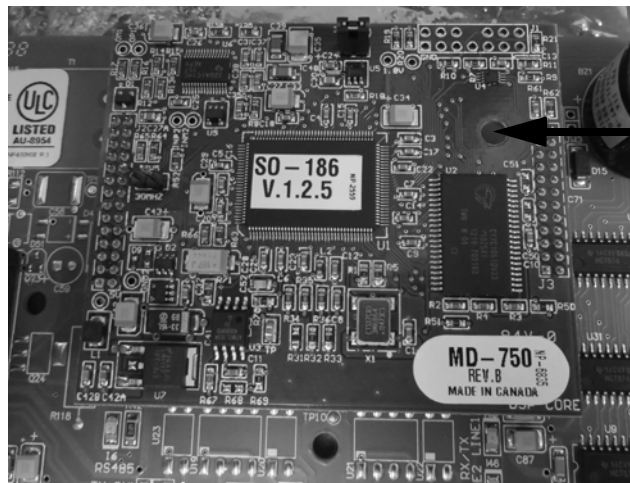
pins on the left side of the MD-750



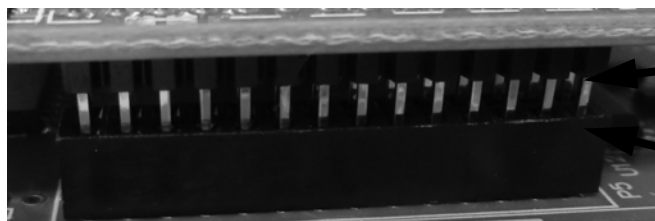
holes on the main board

- Align the replacement MD-750 core board over the main board so that the screw hole and pins on the core board align with the holes on the main board.

The labels on the replacement MD-750 must be the right way up and the screw hole must be on the right.



screw hole on MD-750



pins on MD-750

holes on main board

- Gently push the replacement MD-750 down so that the pins go in the holes.
- Insert and tighten the screw.

#### D. Power up the main board

- Connect AC power to the board.
- Connect the batteries to the board.