

# MGC Network Firmware Update Wizard

The MGC Network Firmware Update Wizard lets you upgrade or downgrade the firmware on a single CPU in a FleX-Net™ or MMX system.

All CPUs in a FleX-Net™ or MMX system must have the same firmware version. If you have a component that cannot communicate with the rest of the system because it does not have the same firmware version as the rest of the system, then you can use the MGC Network Firmware Update Wizard to install the right firmware version on it.

If you want to upgrade the whole FleX-Net™ or MMX system, use the Upgrade Firmware option in the Configurator.

The MGC Network Firmware Update Wizard lets you upgrade or downgrade the firmware on the following CPUs:

- Master CPUs: FX-2000N or MMX-2000N series panels
- Audio controllers, for instance ANC-5000
- Remote annunciators, for instance RAXN-LCD
- Loop controllers, for instance ALCN-792M Quad Loop Adder

You need:

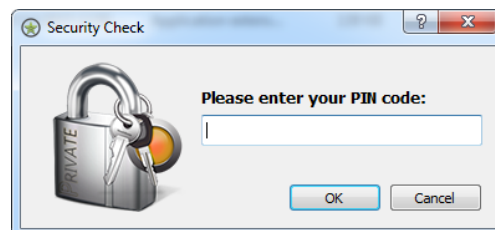
- Windows computer with a serial or USB port
- The MGC Network Firmware Update Wizard software
- Serial cable for updating a remote annunciator or master CPU
- UIMA2 cable and RS-485 adapter for updating a loop adder or audio controller
- Registered CodeMeter key
- A copy of the firmware that you want to load onto the CPU

## Update Firmware



**Attention:** This process erases all the information on the affected CPU. Get the jobs from the panel and back up your configurations before continuing.

1. Insert your FleX-Net™ or MMX CodeMeter key into the computer.
2. Start the MGC Network Firmware Update Wizard.  
The MGC Network Firmware Update Wizard prompts you for your PIN.
3. Type your four digit PIN.



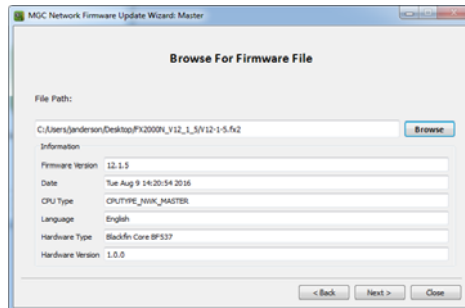


**Note:** To update the firmware, you must use the same ESD number as the organization that configured the panel, unless it is a new blank panel.

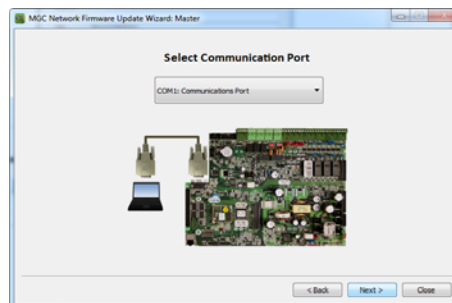
- Click the kind of CPU that you want to upgrade or downgrade.



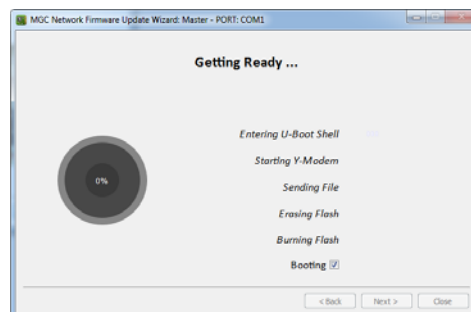
- Click **Browse** and choose the firmware file. The firmware file has the extension **.fx2**.



- Click **Next**.
- Connect the computer to the CPU as shown in the picture that appears in the window. Use either the serial cable or the UIMA2 cable as shown.
- Select the communication port that your computer is using to connect to the CPU.



- Wait while the firmware is upgraded.



When the upgrade is complete, click **Close**.