

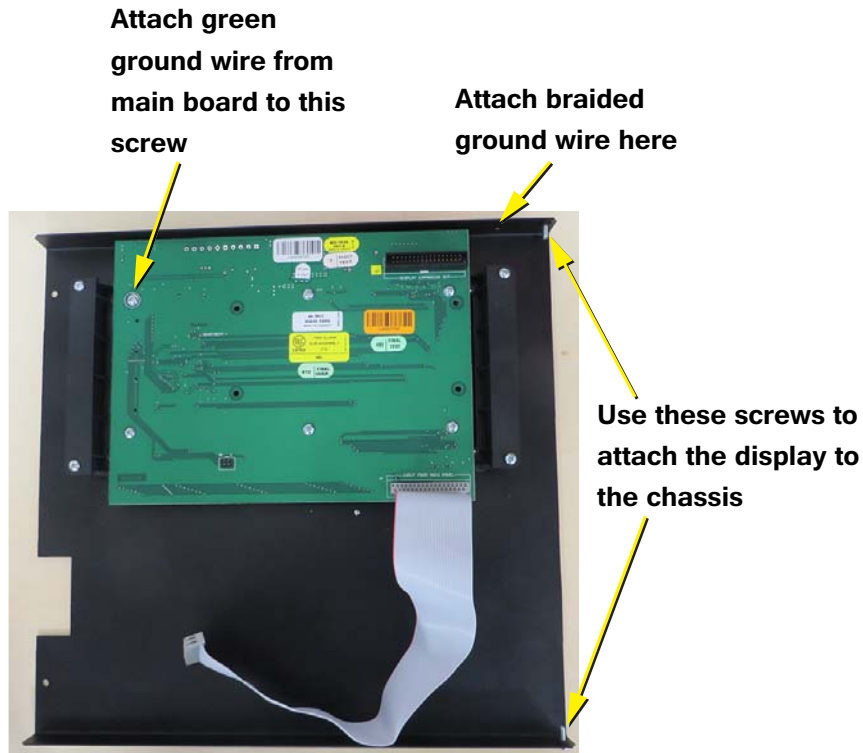
RB-MAM-1000KIT Installation Instructions

1 Power off the Unit and Disconnect AC and Batteries

2 Upgrade the Chip on the Main Board

1. See the upgrade chip instructions (LT-1081) included in this kit.

2 Remove the Old Display Plate and Install the New Display Plate



3 Connect the New Display

1. Connect the ribbon cable from the display to P3 on the main board.



Canada

25 Interchange Way
Vaughan, ON L4K 5W3
Tel: (888) 660-4655

U.S.A

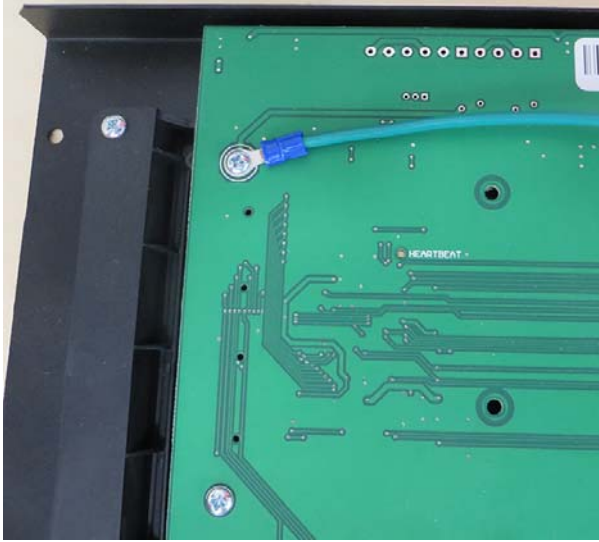
4575 Witmer Industries
Niagara Falls, NY 14305
Tel: (888) 660-4655



www.mircomgroup.com

2 Connect the ground wires

1. Connect the green ground wire from the main board to the upper left screw on the new display.



2. Connect the included ground braid to the hole on the top of the new display plate.
3. Connect the other end of the ground braid to the hole on the chassis.

**Connect included
ground braid to
these holes with the
included screws**

