

OpenBAS

BUILDING
AUTOMATION
SYSTEM

1.0 Establish Initial Communication with the OpenBAS Controller

1.1 DOWNLOAD DRIVERS FROM THE INTERNET

The drivers can be downloaded from the Internet from the site of Microchip as **USB** drivers for **CDC** device in the development libraries.

They are also available on the web page <http://www.rikmed.com> in the section **DRIVER INF**, in a ZIP file named **INF.ZIP**. Download and unzip in any desired directory before connecting the **OPENBAS** for the first time.



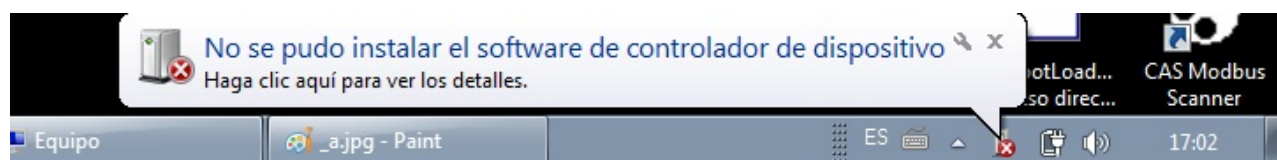
1.2 CONNECT AN OPENBAS CONTROLLER TO ANY USB PORT OF THE PC

To establish communication with the **OPENBAS** control through **USB**, the only thing you that have to do is to connect the USB of the OPENBAS to any USB port of the PC.

- The PC will detect the first time that you must install the drivers, don't allow that Windows detect them automatically canceling the emergent window.

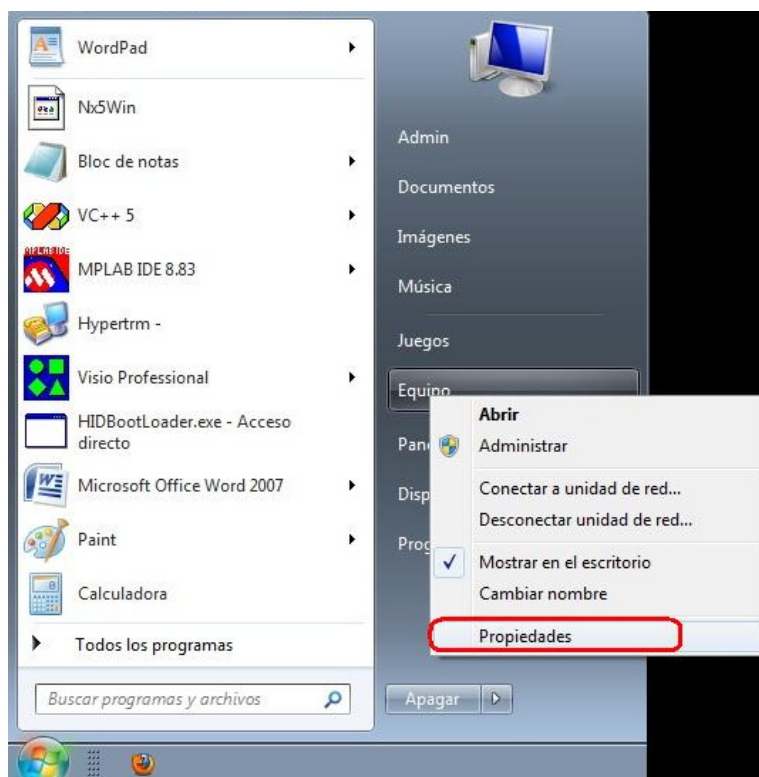


- There will appear a message that the driver didn't install correctly, ignore this for the moment.

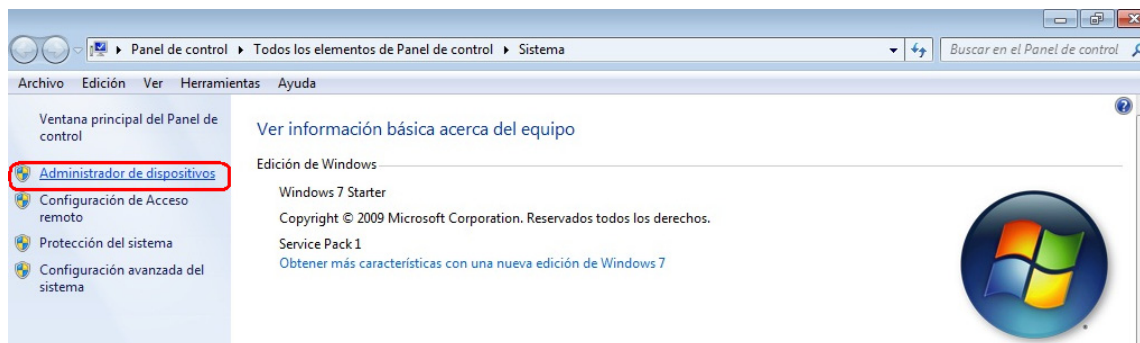


1.3 MANUALLY INSTALL THE DRIVERS

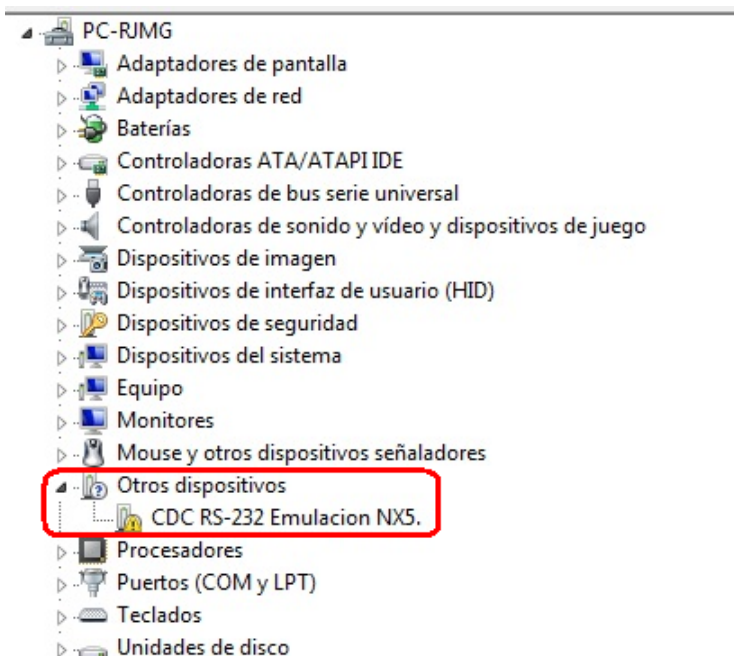
1. From the START menu select COMPUTER and with the right button select PROPERTIES.



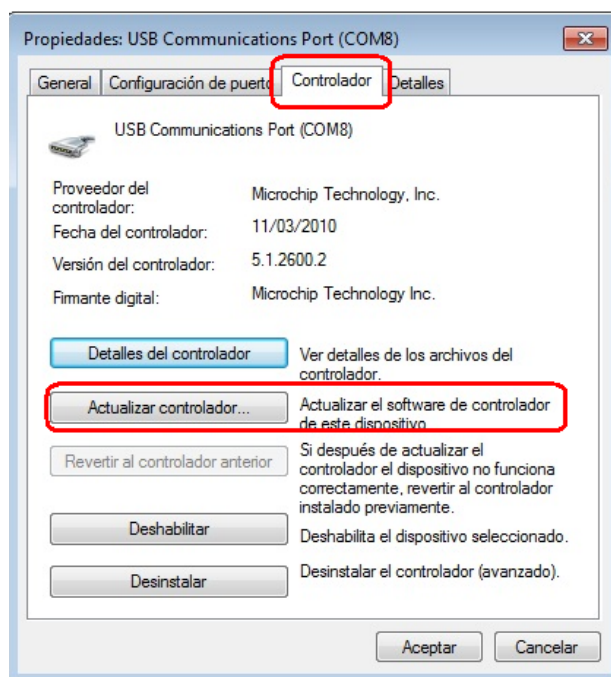
2. Select the DEVICE MANAGER.



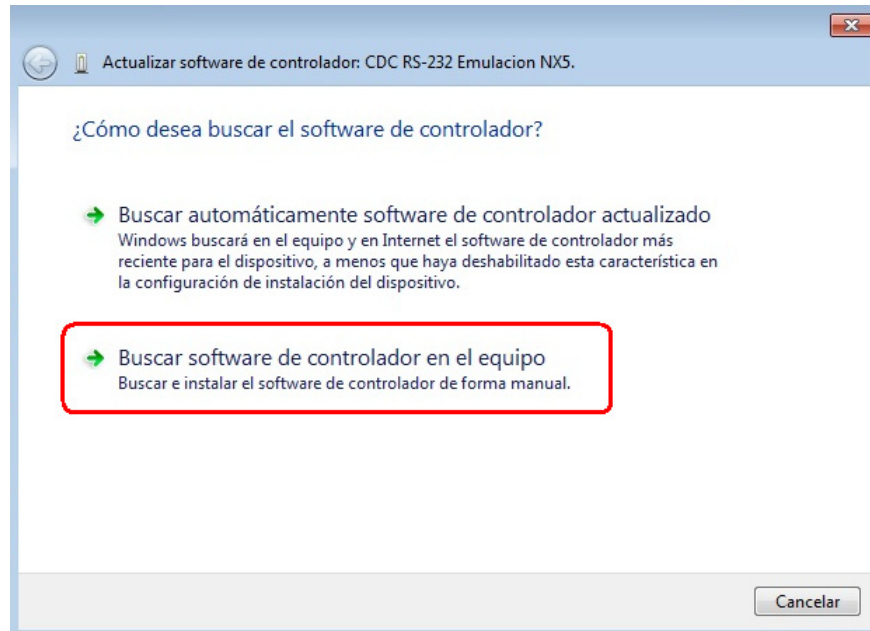
3. There will appear in the device list the controller **CDC-OPENBAS** with a warning symbol showing that are problems loading the drivers. Select with the right button PROPERTIES or make double click in the DEVICE.



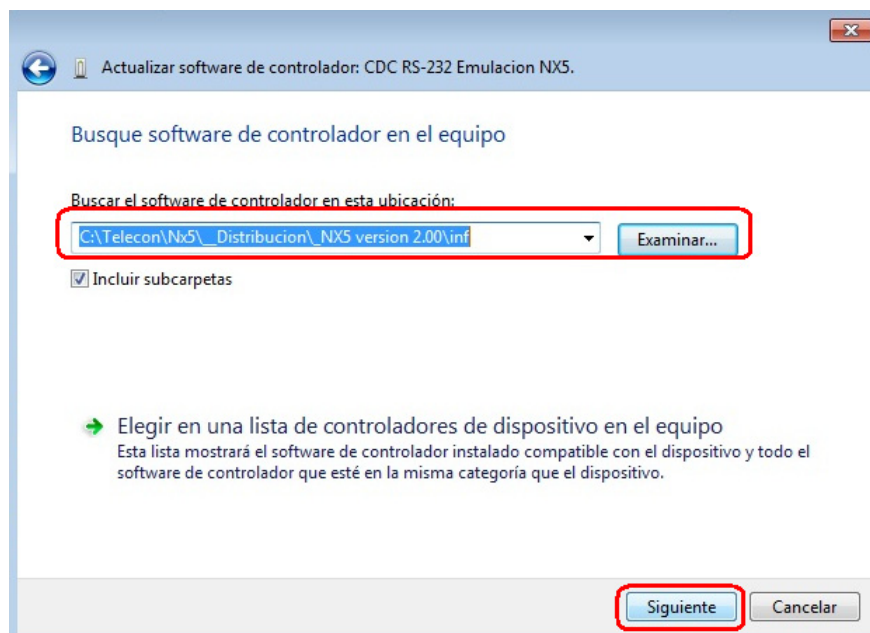
4. Select the tab of DRIVER and then the button of UPDATE DRIVER to start the process.



5. Select the option MANUAL INSTALLATION of the software of the controller in the equipment.



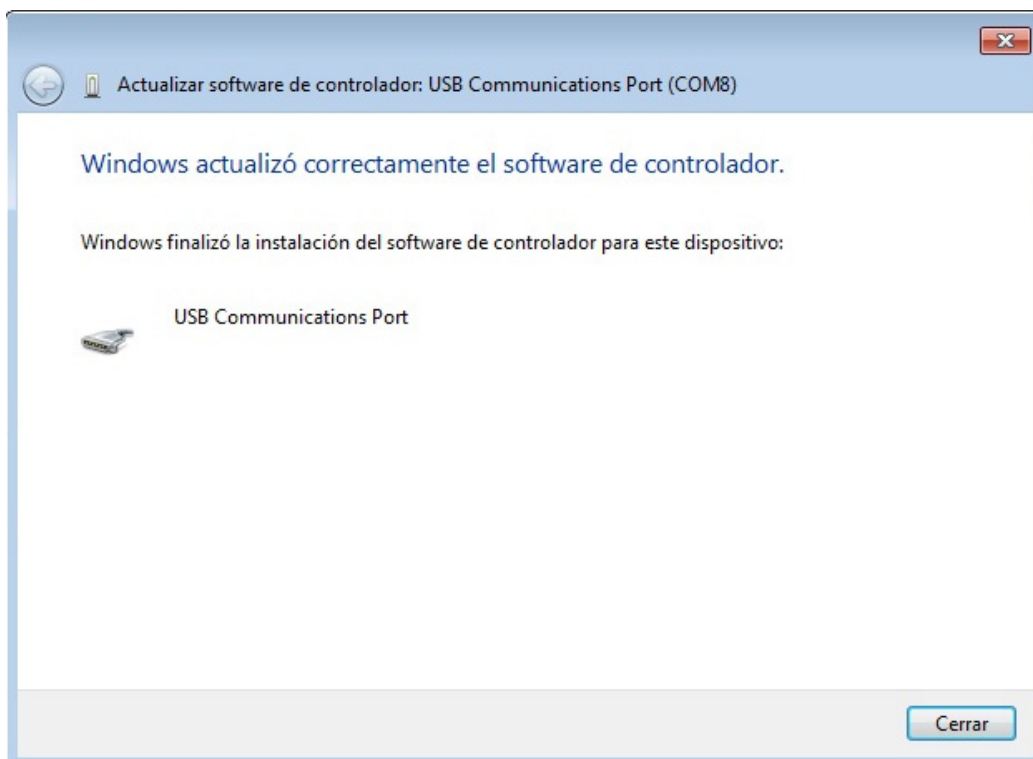
6. Introduce in the PATH field the drivers path in the INF directory depending where you put the downloaded drivers from the Internet in section 1.1, or search for it with the browse button. WHEN it is found then press the NEXT button.



7. Windows will verify for its security the digital firms of the drivers, select the option of TRUST IN MICROCHIP TECHNOLOGY and press INSTALL.

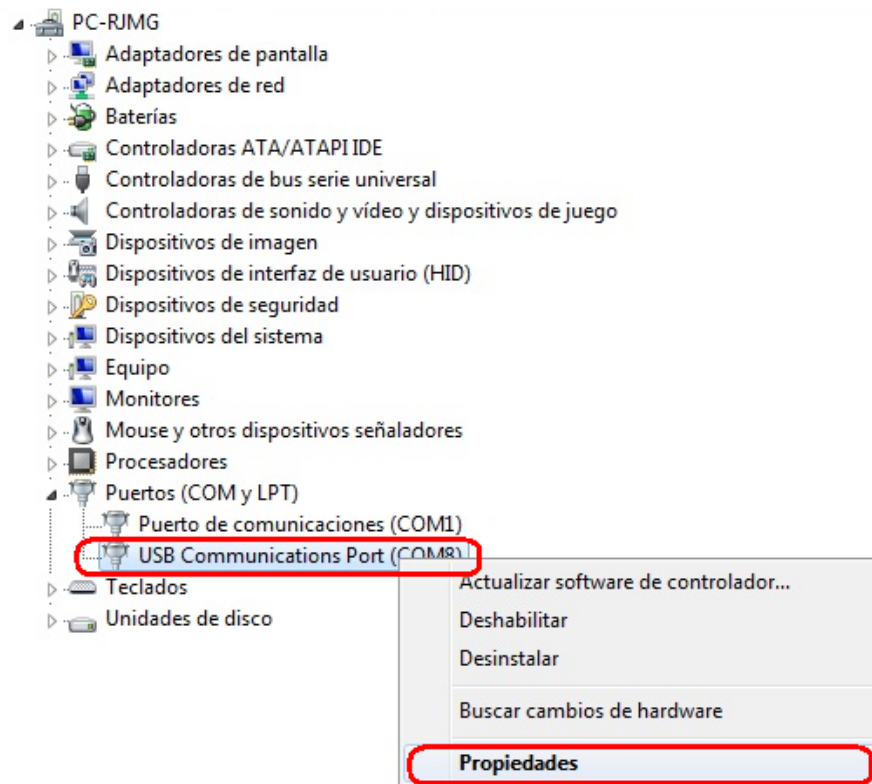


8. After 15-30 seconds depending of the system, there appears a message telling that the CONTROLLERS were installed correctly.

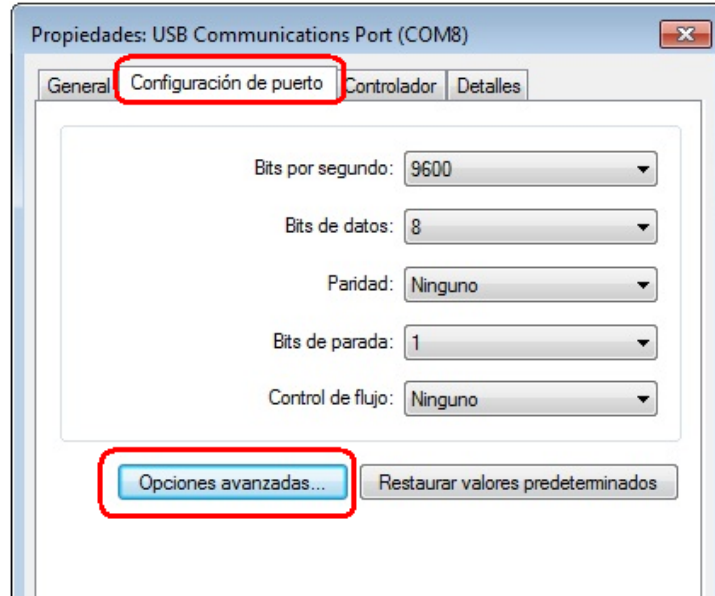


1.4 VERIFY AND CONFIGURE CONTROLLERS

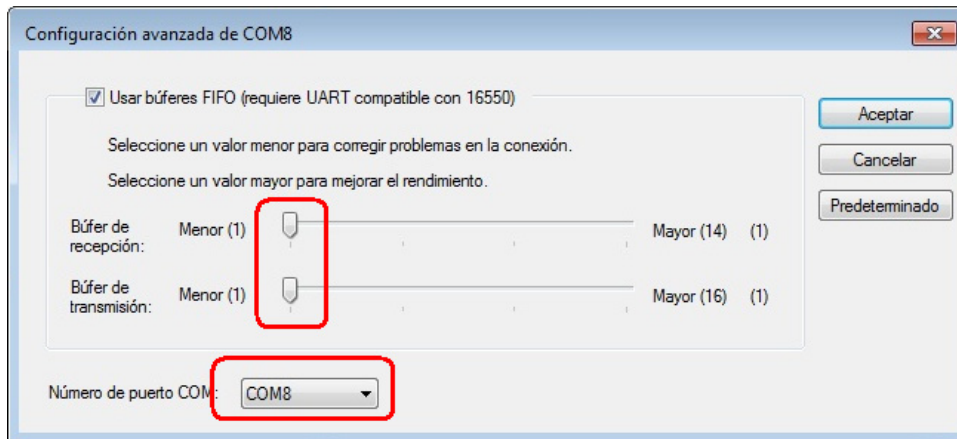
- Once that the controllers are installed successfully, you must verify which port number was assigned by Windows, and configure the transmission buffers / reception for its maximum speed. View instructions on the next page.
- Once the controller is installed, COM port will appear in the PORTS section (COM and LPT) the OPENBAS that is connected by USB, to configure you must select with the right button and select PROPERTIES.



1. Select the TAB of PORT CONFIGURATION and select the button labeled ADVANCED.



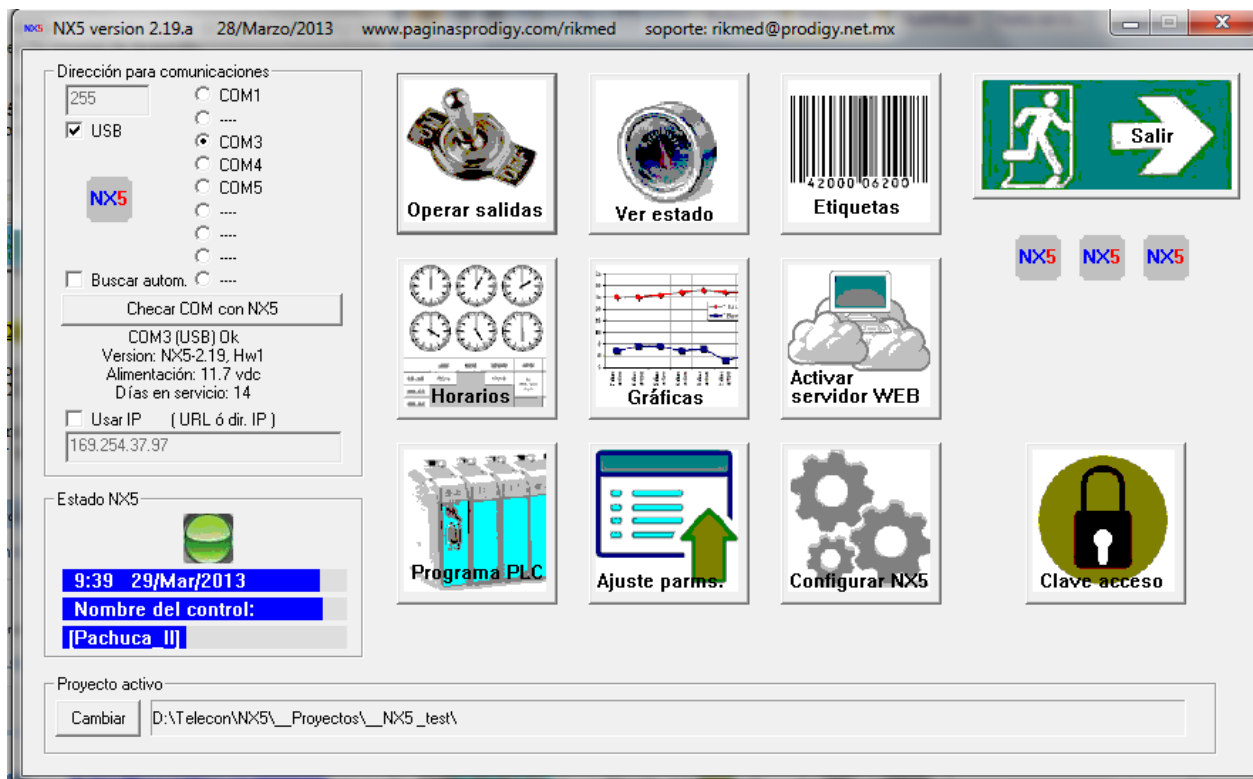
2. Select the **MINIMUM** value for the buffers of RX / TX to have the best response in the communication, and a port number between **COM1 and COM9** to use the software of the **OPENBAS**.



3. Ready, this is all you need to do every time you want to install the CONTROLLERS (Drivers) in a new PC.

1.5 USE THE OPENBAS SOFTWARE

- Now we can use the software of the **OPENBAS** and verify the correct performance of the communication, selecting the port number assigned in the previous step and selecting the communication by **USB**.





CANADA - Main Office
25 Interchange Way
Vaughan, ON L4K 5W3
Tel: (888) 660-4655
(905) 660-4655
Fax: (905) 660-4113

U.S.A
4575 Witmer Industrial Estates
Niagara Falls, NY 14305
Tel: (888) 660-4655
(905) 660-4655
Fax: (905) 660-4113

TECHNICAL SUPPORT
North America
Tel: (888) Mircom5
(888) 647-2665
International
Tel: (905) 647-2665

© Mircom 2017
Printed in Canada
Subject to change without prior notice

www.mircomgroup.com