

TX3-T10TRS Surface Mounted Trim Ring Installation Instructions

TX3-T10TRS supports the following model:

- TX3-T10 Series

Included in kit:

- TX3-T10TRS surface trim ring
- 4 #8 x 0.625 panhead screws
- 1 card reader kit (card reader window, card reader bracket compatible with TX3-CSR-35 and TX3-PCR-35)
- 1 postal lock kit (postal lock window, postal lock metal insert, postal lock switch holder, switch and cable, 2 #4-40 screws and washers)
- 6 x #8-32 nuts for card reader kit or postal lock kit

You need:

- Four fasteners appropriate for the wall, for securing TX3-T10TRS to the wall

Dimensions

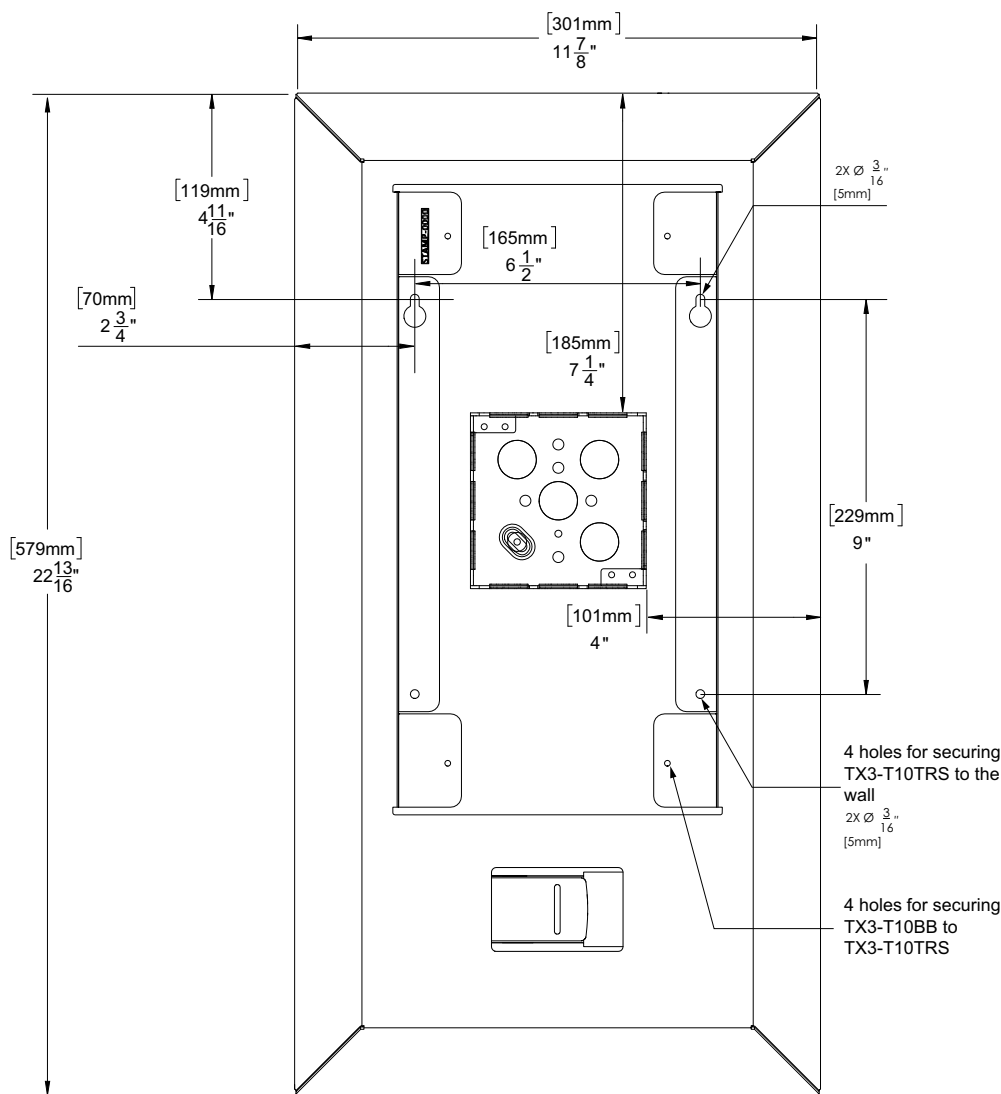


Figure 1. TX3-T10TRS dimensions

Step 1: Secure TX3-T10TRS to the Wall

1. Attach the TX3-T10TRS to the wall using four fasteners appropriate to the wall. The mounting holes are shown in Figure 1.

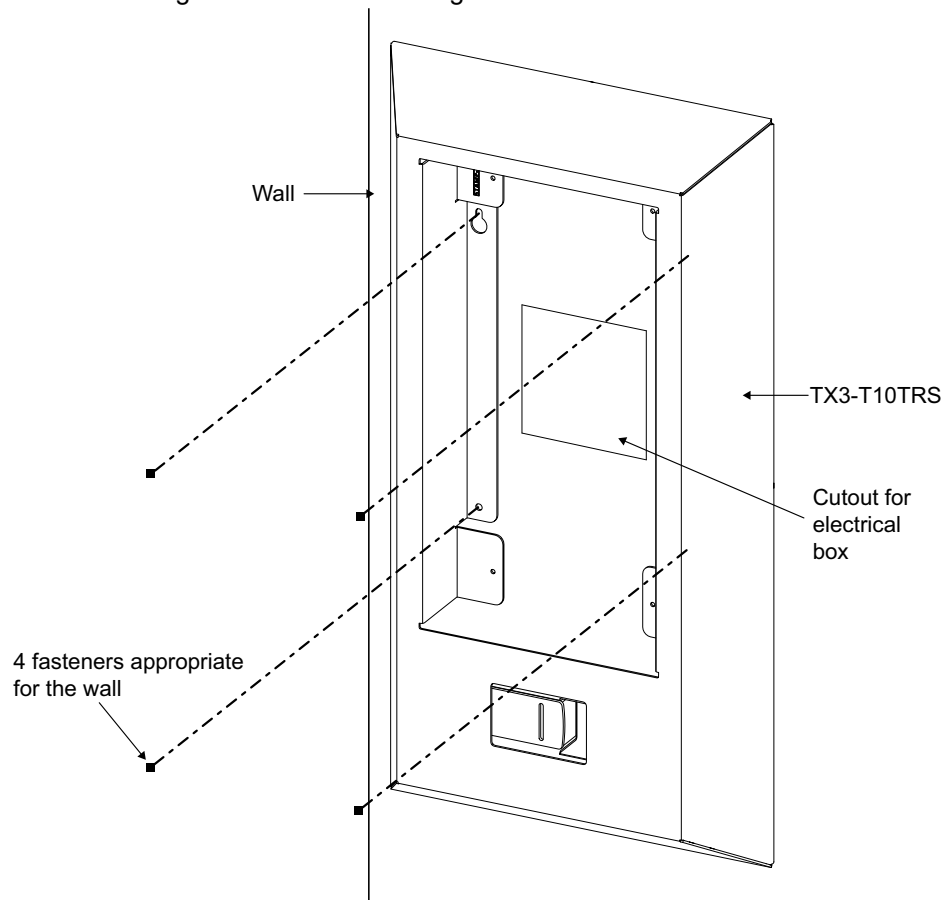


Figure 2. Secure TX3-T10TRS to the wall

Mircom
<http://www.mircom.com>
CANADA - Main Office
25 Interchange Way
Vaughan, ON L4K 5W3
Tel: (888) 660-4655
(905) 660-4655

U.S.A
4575 Witmer Industrial Estates
Niagara Falls, NY 14305
Tel: (888) 660-4655

Subject to change without prior notice.

LT-6829 Rev 1 See <https://mircom.com/> for the latest information

Step 2: Secure TX3-T10BB to TX3-T10TRS

1. Cut an opening in the wall for a 4x4" electrical box based on the dimensions shown on page 1. The electrical box must have a depth of at least 2.27".
2. Route the wiring through the knockout and into the electrical box.
3. Install the ferrites on the network cable and the power cable as described in LT-6766 (TX3-T10 Installation Manual). Place the ferrites in the electrical box.
4. Attach the electrical box to the TX3-T10BB backbox as described in LT-6766.
5. Connect the ground wires as described in LT-6766.
6. Follow the instructions in LT-6766 to attach the electrical box to TX3-T10BB.
7. Secure TX3-T10BB to TX3-T10TRS with the four washers provided with TX3-T10BB and four #8 x 0.625 panhead screws provided with TX3-T10TRS.
8. Follow the instructions in LT-6766 to install TX3-T10 in TX3-T10BB.

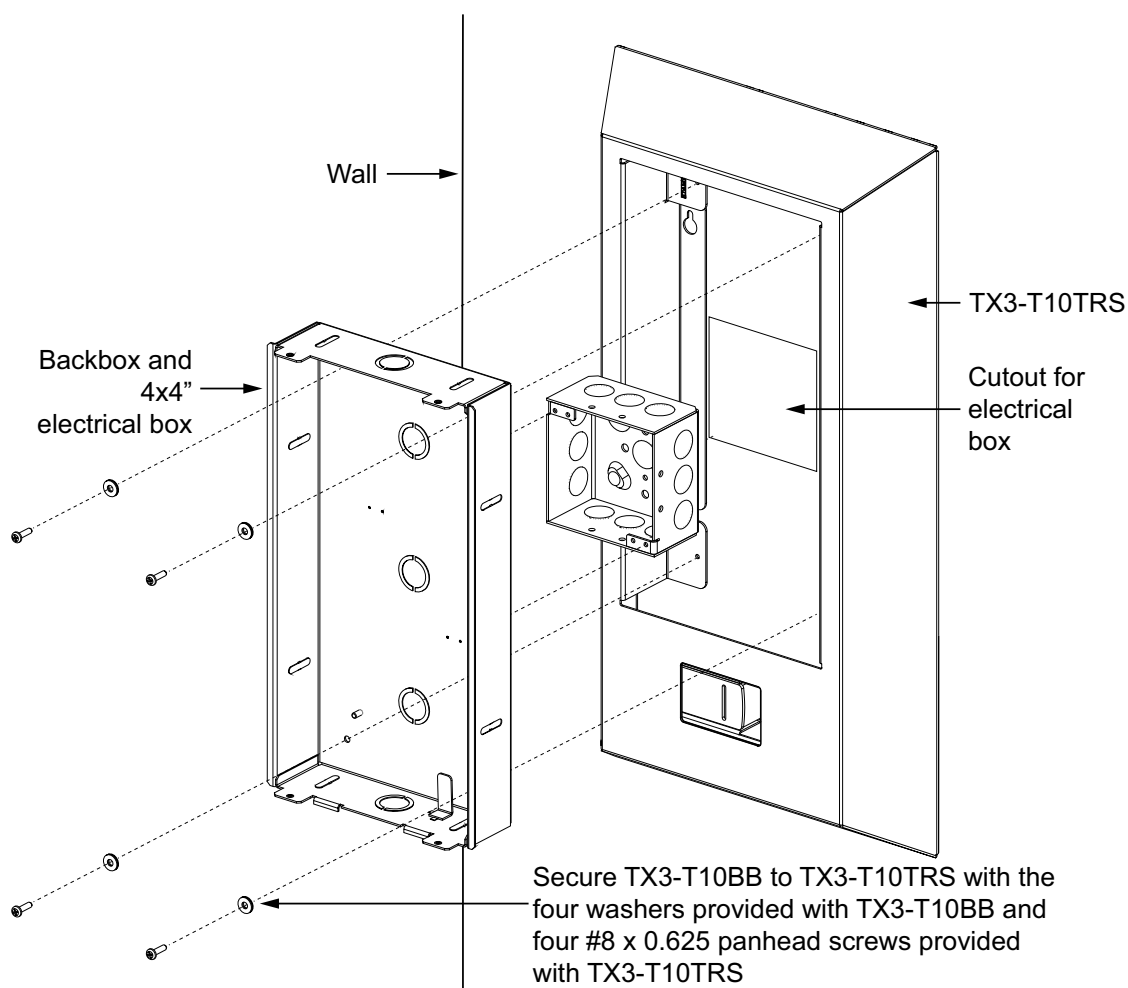
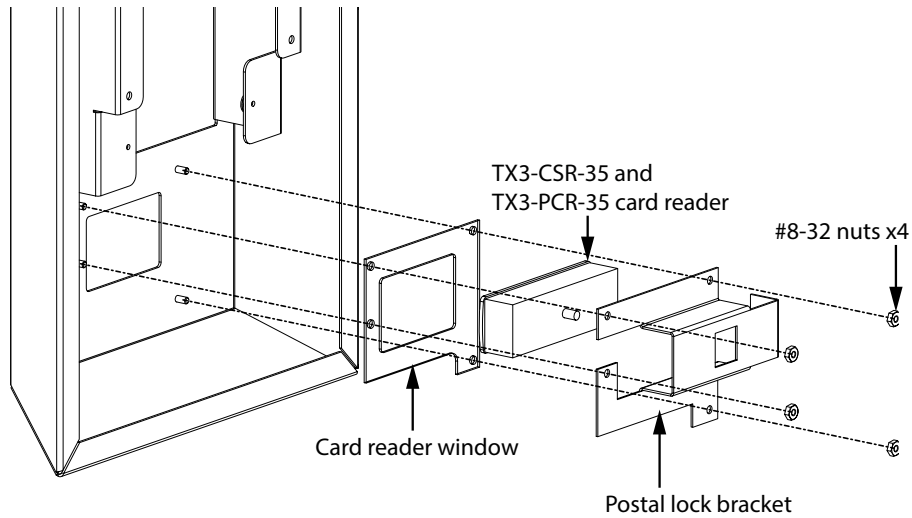


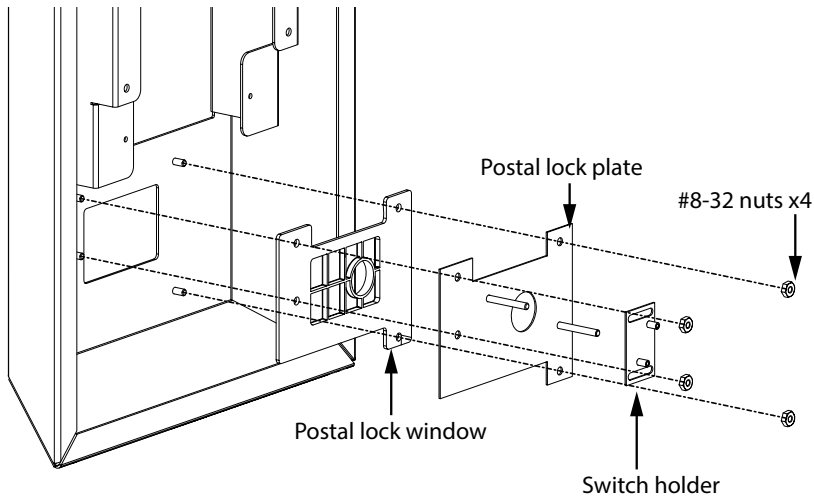
Figure 3. Secure TX3-T10BB to TX3-T10TRS

Install the Card Reader

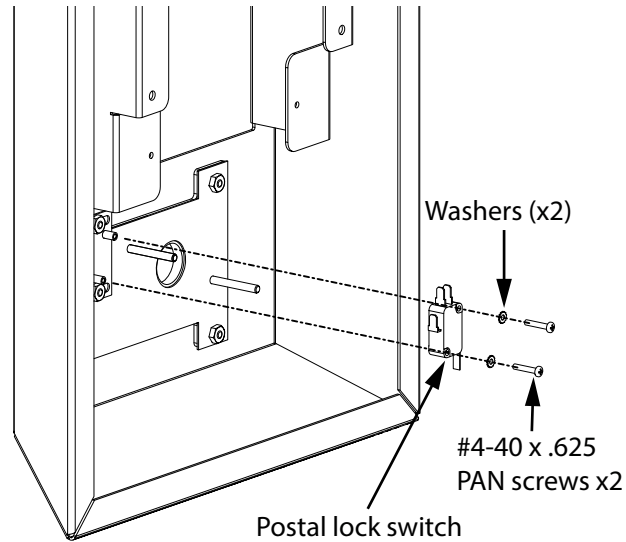


Install the Postal Lock

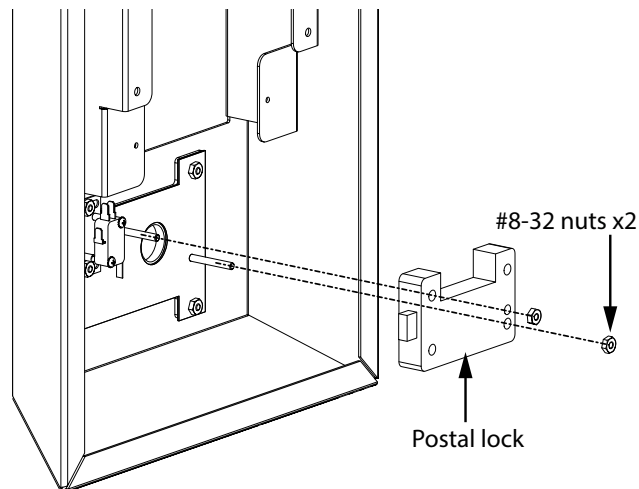
1: Use the 4 Nuts to Secure the Postal Lock Window, Insert, and Switch Holder



2: Attach the Switch



3: Attach the Postal Lock



4: Wire the Switch

Wire the postal lock switch to an input on the TX3-T10 with the included cable.

Note: Do not wire the switch until after the postal lock is installed.