

MOUNTING PLATE

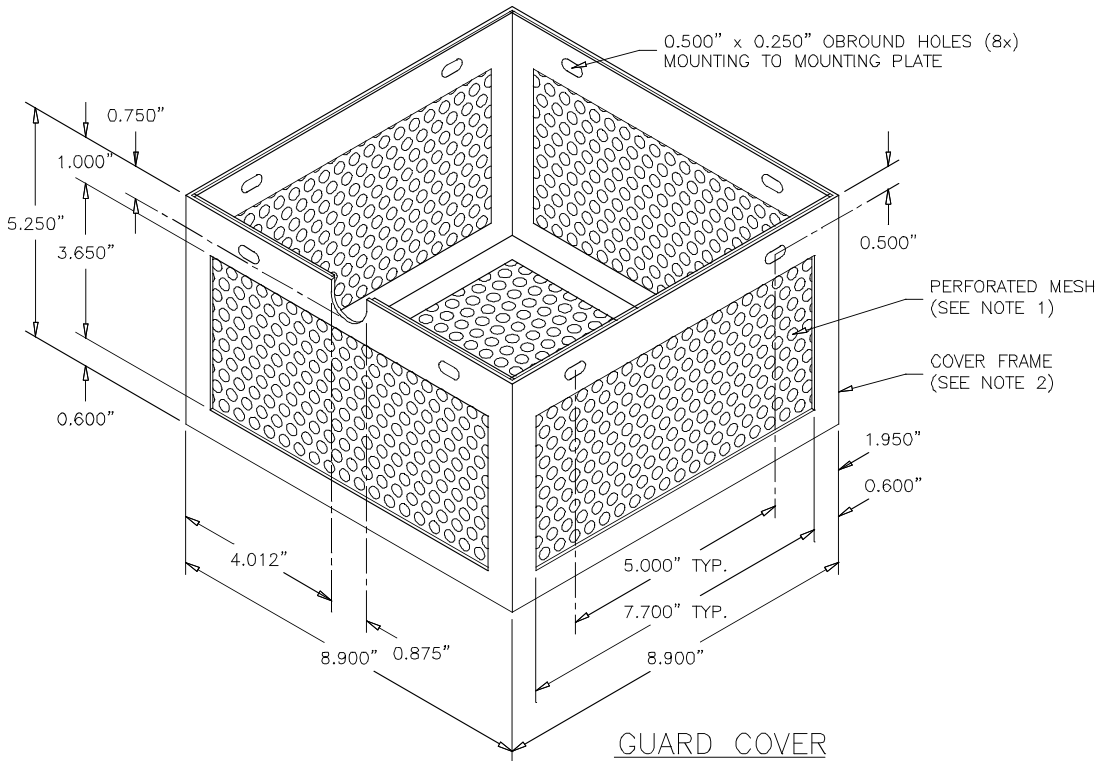
0.170" DIA. HOLES (8x)
TAP #10-32 AFTER PAINTING

NOTES

1. THE PERFORATED MESH IS MADE OF 16 GAUGE COLD ROLLED STEEL WITH 0.250" DIA. HOLES. DISTANCE BETWEEN HOLES ARE 0.312" FROM COLUMN TO COLUMN AND 0.275" FROM ROW TO ROW. THE PERFORATED MESH IS WELDED INSIDE (5 SIDES) OF THE COVER FRAME.
2. THE COVER FRAME AND MOUNTING PLATE IS CONSTRUCTED FROM 14 GAUGE COLD ROLLED STEEL.
3. ALL CORNERS AND EDGES TO BE ROUNDED.
4. THE GUARD COVER AND MOUNTING PLATE IS PAINTED SMOOTH WHITE.
5. EIGHT #10-32 x 1/2" TAMPER-RESISTANT SCREW IS PROVIDED WITH EACH GUARD COVER FOR MOUNTING TO THE CEILING MOUNTING PLATE.
6. THE USE OF THIS GUARD WITH LOW PROFILE SMOKE DETECTORS REQUIRES THE INSTALLATION OF A 1-1/2" DEEP BOX EXTENSION RING ONTO THE FLUSH MOUNTED 4" ELECTRICAL BOX AT THE DETECTOR LOCATION. THE SMOKE DETECTOR MOUNTING BRACKET SHOULD THEN BE INSTALLED ONTO THE EXTENSION RING.

7. THE GUARD WILL BE USED WITH THE FOLLOWING SMOKE DETECTORS WHEN CONNECTED ONLY WITH MIRCUM LISTED FIRE CONTROL PANELS:

- | | |
|------------|-----------|
| MIR-525(T) | MIX-1251A |
| MIR1400-A | MIX-2251A |
| MIR2400-A | MIX-1151A |
| MIX-1551A | MIX-2151A |
| MIX-2551A | |



GUARD COVER

2	RE	REVISED 6JUN2000
1	RE	NOTE 6 ADDED 12APR2000
REV. BY		REMARKS

MIRCUM TECHNOLOGIES LTD.			
TOLERANCE: .X ± .050 IN. .XX ± .020 IN. .XXX ± .010 IN.		TITLE: SMOKE DETECTOR GUARD (MD-674)	
SCALE: 1:1	DRAWN: 24FEB2000	USED ON: SDG-100	PART NO.: LT-854
		APPROVED:	