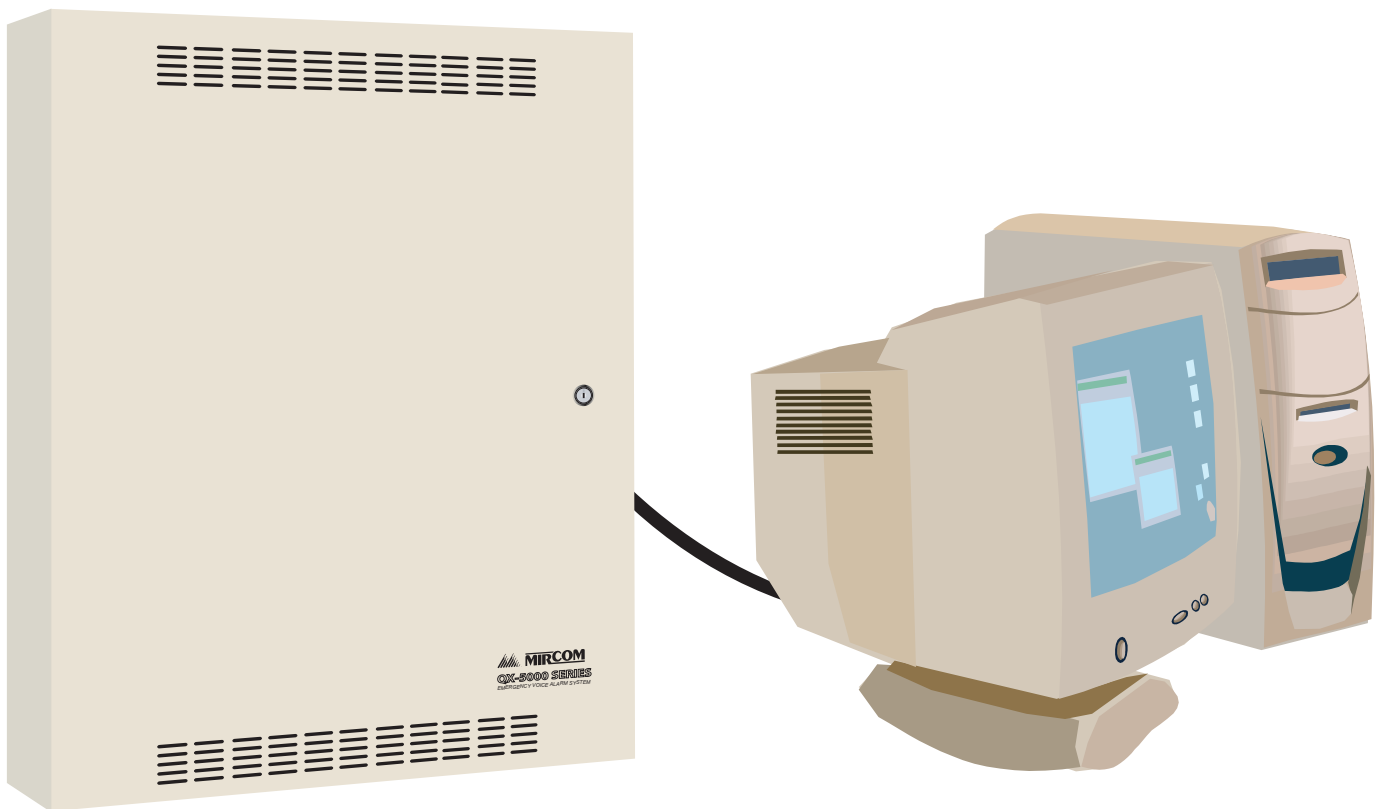


QX-5000 Series

Windows Configuration Utility



Contents

Part I: Getting Started

Introduction	3
About this Manual	3
Installing the Configuration Utility.....	3
Technical Support.....	3
Understanding the Configurator Work Area.....	4
The Main Window	4
Toolbar Buttons.....	5
Status Bar	5
The Main Menu	6
Changing the Main Window Layout	8
Changing the Configuration Utility Settings	8
Using Shortcuts.....	9
Working with Job Configuration Files	10
Backward Compatibility.....	10
About Configuration File Names and Job Names	10
Creating a New File	10
Opening a File.....	11
Saving a File	11
Reloading a File	11
Changing the Job Name and Description	11
Validating the Job Configuration	11
Copying and Pasting Lists to a Text Editor	11
Copying and Pasting the Components Summary Report to a Text Editor	12
Sorting Lists	12
Copying and Pasting the System Configuration Information to a Text Editor	13
Searching for System Devices with Similar Functions.....	13

Part II: Configuring the System

Connecting to the Panel	14
Connecting to the Panel.....	14
Disconnecting from the Panel	14
Serial Port Settings	15
Sending and Getting a Job	15
Communication Errors	15
Configuring the System.....	19
Accessing the System Configuration Window	19
Adding and Configuring Amplifiers/Zones.....	20
Understanding the Amplifiers/Zones List	20
Adding Amplifiers	21
Deleting Amplifiers	21
Editing Amplifier Properties.....	22
Adding and Configuring Inputs	23
Understanding the Inputs List	23
Adding Inputs	24
Editing Input Properties.....	24
Adding and Configuring the QDV-1000.....	25
Understanding the QDV-1000 List	25
Editing Manual Switch Messages	26
Adding and Configuring a QIF-1000.....	27
Adding a QIF-1000.....	27

Editing the QIF-1000 Properties.....	28
Setting a Local QIF-1000	28
Appendix A: Setting Delimited Text Format Preferences.....	29
Appendix B: Copying and Pasting Into Excel	30
Procedure 1: Pasting Directly into Excel.....	30
Procedure 2: Importing a Text File Into Excel	31

Part I: Getting Started

Introduction

The QX-5000 Windows Configuration Utility configures the QX-5000 Emergency Voice Alarm System. This utility is designed to run in all versions of Windows.

About this Manual

This user guide provides information on using the QX-5000 Configuration Utility to configure the QX-5000 Emergency Voice Alarm System. Specifically, with this manual you will learn about

- How to use the work area
- How to connect your PC to the panel and transmit data
- How to work with configuration files
- How to configure the QX-5000 Emergency Voice Alarm System

Installing the Configuration Utility



Note: Installing the current QX-5000 Configuration Utility does not overwrite earlier versions.

To install the Configuration Utility:

1. Insert the QX-5000 CD into your CD-ROM drive. The start up page displays.
2. Double-click the file “setup.exe”.
3. Follow the on-screen installation instructions.

Technical Support

For all technical support inquiries, please contact Mircom’s Technical Support Department between 8 A.M. and 5 P.M. (EDT) Monday through Friday, excluding holidays.

Local Phone: 905-695-3535 **Toll-Free Phone:** 1-888-449-3535

Local Fax: 905-660-4113 **Toll-Free Fax:** 1-888-660-4113

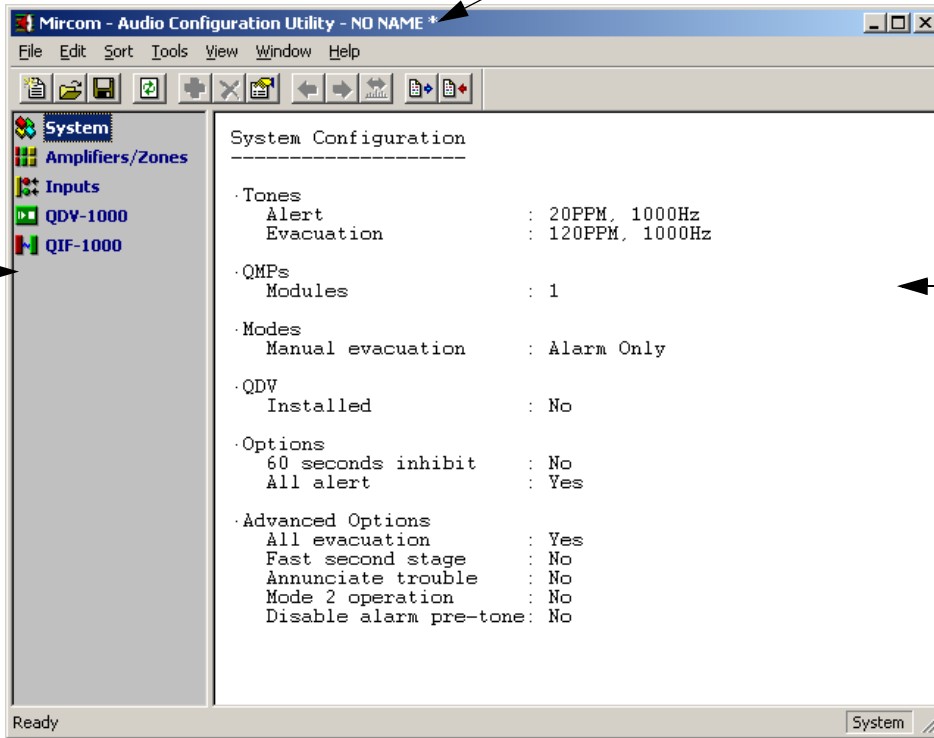
Email: techsupport@mircom.com.

Understanding the Configurator Work Area

The Main Window

This asterisk (*) means that the file changes have not been saved

Left pane lists system components that can be configured















Right pane displays the configuration that is selected in the left pane

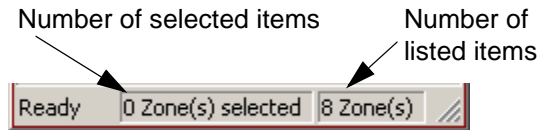
The Main Window consists of two panes. The left pane displays a list of the system components that can be configured. When selecting an item from the list, the application will display the corresponding configuration in the right pane.

The window's title bar shows the application name, the configuration name and, optionally, the configuration file path. If changes were made to the configuration file and weren't saved, the title bar will show an asterisk (*) beside the configuration name (the save command is enabled only if you make any changes to the configuration).

Toolbar Buttons

Button	Description
	Creates a new configuration (same as File-->New).
	Opens an existing configuration file (same as File-->Open).
	Saves the changes to the configuration file (same as File-->Save).
	Reloads the configuration (same as File-->Reload).
	Adds a new item (same as Edit-->Add).
	Deletes a selected item (same as View-->Delete).
	Edits the properties of the selected item (same as Edit-->Properties).
	Shows the previous relevant item (same as View-->Previous).
	Shows the next relevant item (same as View-->Next).
	Edits the next/previous settings (same as View-->Next/Previous Settings).
	Sends the job to the panel (same as Panel-->Send Configuration).
	Gets the job from the panel (same as Panel-->Get Configuration).

Status Bar



The status bar runs across the bottom of the Window. The left-most area shows actions in progress. The area to the right shows the number of selected and listed items respectively.

The Main Menu

File Menu

Menu Item	Description
New	Creates a new job configuration file. The new file will be immediately created in memory and the Main Window's title bar will indicate that it has changed (shows the asterisk (*)).
Open...	Opens an existing configuration file. The application will prompt you to specify a file name to open. It checks if the specified file name is a valid configuration file. The working file changes will <i>not</i> be lost if the configuration utility cannot open the new file.
Save	Saves the loaded job configuration file. The option will only be enabled if the job configuration has changed.
Save As...	Saves the loaded job configuration to a different name. Once saved, any changes you make will be to the newly named file.
Properties...	Edits the properties of the job configuration file. You will be prompted to specify a name for the job and a description. The configuration name displays in the application title bar.
Components Summary	Displays the components summary. The summary will report all hardware components used in the job configuration. You can copy the report contents to the a text editor (e.g. Notepad).
Reload	Reloads the loaded configuration file. You will be warned that any changes made will be lost.
Load Layout	Loads the application layout. If there is no saved layout, nothing will change. The layout is applied immediately after been loaded.
Save Layout	Saves the application layout.
Exit	Exits the application. You will be warned that any changes will be lost if you do not save the file.

Edit Menu

Menu Item	Description
Add...	Adds a new item. You will be prompted to enter the new item information. The item information depends on the selection you have made in the left pane.
Delete	Deletes the selected items. The option will only be enabled if you select one or more items from the list.
Properties	Edits the properties of the selected item. This option will be available if there is only <i>one</i> item selected from the list.
Select All	Selects all items from the list. The option will be enabled only if there is one or more items in the list.
Copy	In general, this option copies the contents of the right pane. When viewing zones, you can select and copy them individually. The column headers will be copied as well. If you made no selection from the list, all listed items will be copied. You can then paste this copied information into a text editor (e.g. Notepad).

Sort Menu

The sort menu is created dynamically according to the displayed list.

Tools Menu

Menu Item	Description
Validate	Validates the job configuration data and ensures its integrity. The validation process will automatically start before saving, transmitting the data to the panel, or generating the components summary. If the validation fails in any of these operations, the requested operation will not be terminated.
Send Configuration	Sends the loaded job configuration to the panel. The serial settings have to be configured before you can transmit the job configuration. If you haven't configured the settings and have attempted to transmit to the panel, you will be prompted to do so.
Get Configuration	Gets the configuration from the panel.
Serial Port Settings	Edits the serial port settings. The serial port settings have to be configured before transmitting data to and from the panel.
Settings	Edits the application settings.

View Menu

Menu Item	Description
System	Views the System configuration.
Amplifiers/Zones	Views the Amplifiers/Zones configuration.
Inputs	Views the Input configuration.
QDV-1000	Views the QDV-1000 configuration.
QIF-1000	Views the QIF-1000 configuration.
Next	Works as part of the Next/Previous Settings. When you select an item in the amplifiers/zones list and then select this option, the utility will move the selection to the next item in the list that matches the criteria specified in the Next/Previous Settings.
Previous	Works as part of the Next/Previous Settings. Works the same way as the Next option, but the search is upwards.
Next/Previous Settings...	Allows you to edit the next/previous search criteria.
Toolbar	Shows or hides the toolbar.
Status bar	Shows or hides the status bar.

Window Menu

Menu Item	Description
Split	Allows you to adjust the size of the left and right panes of the Main Window. When you select this option, the cursor will jump to the vertical splitter frame and you can use the right and left arrows or the mouse to move it. Press SHIFT + ENTER to set the new size, or ESC to cancel.
Next	Sets the control to the next pane. When selected, the next pane in the panes' chain will be activated and all keyboard input will be sent to it.

Help Menu

Menu Item	Description
About	Displays the application version information and copyright.

Changing the Main Window Layout

You can customize the Main Window layout to suit your needs:

- Resize the Main Window by clicking and dragging its right corner
- Move the toolbar by clicking and dragging it to another area of the screen
- Change the toolbar and status bar visibility state through the **View** menu
- Change the width of columns in a list by clicking the edge of a column heading and dragging it left or right
- Change the location of columns by clicking and dragging them left or right

To save the Main Window layout, select **File-->Save Layout** from the main menu.

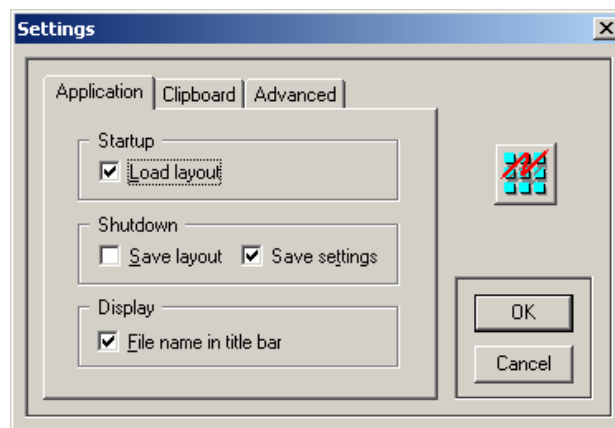
To restore the Main Window to a previously saved layout, select **File-->Load Layout** from the main menu. For details on setting the Main Window Layout options, see *Changing the Configuration Utility Settings* below.

Changing the Configuration Utility Settings

To change the configuration utility settings, select **Tools-->Settings** from the main menu. The Application, Clipboard, and Advanced tabs are described below.

Application Tab Description

The Application tab contains the application settings.

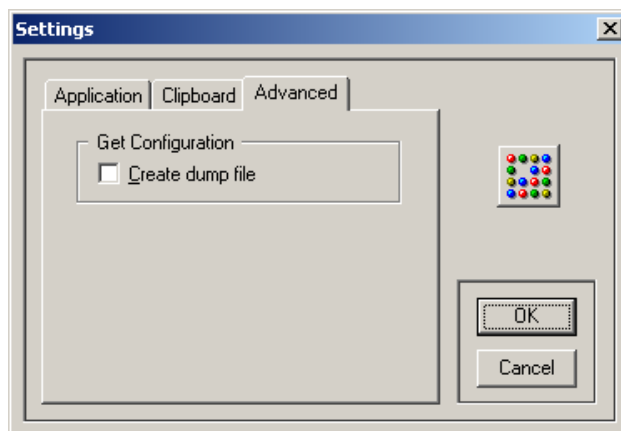


- Checking the **Load Layout** checkbox will load the stored layout when you start the configuration utility.
- Checking the **Save Layout** checkbox tells the configuration utility to store the current layout when the utility is shutting down.
- Checking the **Save Settings** checkbox tells the utility to save all settings in the Settings Window.
- The **File name in title bar** checkbox toggles between displaying and hiding the configuration filename in the Main Window title bar.

Clipboard Tab Description

See *Appendix A* on page 29 for details.

Advanced Tab Description



When the Create dump file checkbox is checked, any data received from the panel will be stored to a file in the TEMP directory. This is useful for troubleshooting configuration and download problems. The file name will be composed of the current date and time using the following format: "QX5 ddmmyy hhmmss.DMP".

Using Shortcuts

Along with using the menu and toolbar buttons to perform tasks, you can also use the keyboard and/or the mouse.

To add an item when viewing the amplifiers/zones list

- Double-click in an empty area in the list, or
- Press the **Insert** key, or
- Right-click in the list and select **Add** from the popup menu, or
- Select **Edit-->Add** from the main menu.

To edit an item when viewing the amplifiers/zones list

- Double-click it, or
- Select it and press ENTER, or
- Right-click it and select **Properties** from the popup menu, or
- Select the item, then select **Edit-->Properties** from the main menu.

To delete an item when viewing a list

- Select the item(s) and press the **Delete** key, or
- Right-click the item(s) and select **Delete** from the popup menu, or
- Select **Edit-->Delete** from the main menu.

To toggle control between panes

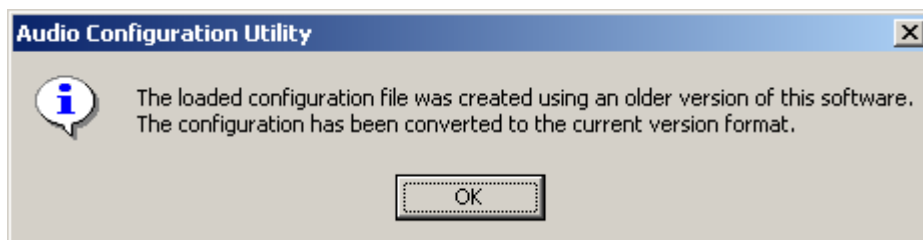
- Click the mouse in the desired pane, or
- Press Ctrl+Tab.

Some other menu items have shortcut keys for fast accessibility. These shortcuts are displayed to the right of their menu item names.

Working with Job Configuration Files

Backward Compatibility

The current configuration utility is backward compatible with all old QX-5000 configuration files. Some older versions of this software use configuration files with the extension **LDB**. The new configuration file extension is **QX5** (example: **AUDIO.QX5**). When you open an old configuration file in the current configuration utility, the utility will convert the file to the new format and will display the window below.



When you attempt to save the converted file for the first time, the utility will ask you to specify a new file name.

About Configuration File Names and Job Names

The **configuration file name** is the name of the configuration file that is **stored on your PC**. You can open or save this file using the configuration utility. Configuration files have the extension QX5 (example: TEST.QX5).

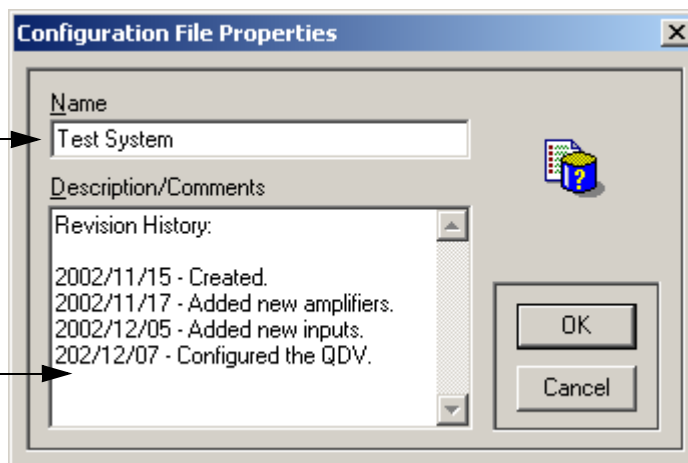
The **job name** is the name you give to a job configuration whenever you create a new file (see below). This name appears in the Main Window title bar, and it is **stored on the panel** when you send a job configuration to it.

Creating a New File

1. Select **File-->New** from the main menu. The Configuration File Properties Window displays.

This is the **job name**. This name is stored on the panel when you send a job configuration to it.

You can enter a description of the job here. This is useful for tracking changes. This is also saved on the panel.



2. Enter a job name and description. You can use the description/comments field to keep track of job version numbers and to track changes.
3. Click OK to continue.
4. Select **File-->Save** or **File-->Save As** to save the new file.

Opening a File

1. Select **File-->Open** from the main menu. If there is a file that is already open and it has been changed, you will be prompted to save the changes before proceeding. The Open Configuration Window displays.
2. Navigate through the directories to locate the desired file.
3. Select the file name, then click Open.



Note: To open an old version configuration file (has the extension .LDB), select All Files from the Files of type list at the bottom of the Open Configuration Window, then select the required file. Click Open to continue.

Saving a File

Select **File-->Save** from the main menu to save the current file.

Select **File-->Save As** from the main menu to save the current file with a different file name.

Before saving, the utility will validate the configuration and will not save it if there are errors. The **Save** option will only be enabled if the loaded file has been changed.

Reloading a File

The reload option allows you to restore a job configuration to the last time you saved it. This will overwrite any current changes. To reload, select **File-->Reload** from the main menu.

Changing the Job Name and Description

You can change the job name and description by selecting **File-->Properties** from the main menu. The Configuration File Properties window opens (see previous page). From here you can change the name of the job and the job description.



Note: Changing the name in the Configuration File Properties window will not change the name of the configuration file (the .QX5 file) (see the screen shot on the previous page for details).

Validating the Job Configuration

When you save a job configuration, transmit it to the panel, or generate the components summary report, the configuration utility will validate the data to ensure its integrity. The utility will not perform the requested operation if the validation fails. You can also run the validation test manually by selecting **Tools-->Validate** from the main menu.

The validation test goes through several checks:

- Ensures all inputs are using valid (existing) zone switches.
- Ensures all QIF-1000 IDs are contiguous and that there is at least two of them: one local and one remote.
- Ensures that, if a QDV-1000 is installed and the alarm pre-tone is enabled, QDV Channel-4 Part-1 has a message that is set to the maximum value repeat time (255). (see *Advanced Options* on page 19 for more information).

Copying and Pasting Lists to a Text Editor

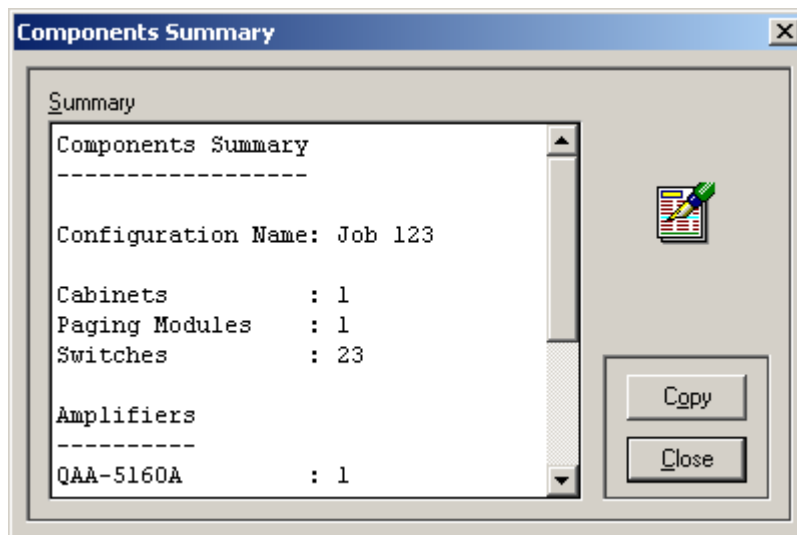
To copy list information to a text editor (e.g. Notepad),

1. Select the desired configuration category from the left pane.
2. Select the desired list items.
 - To copy all listed items, un-select all selected items by clicking the white space below the zones list.
 - To copy specific list items, SHIFT + click or CTRL + click the desired items from the list.
3. Select **Edit-->Copy** from the main menu.
4. Paste the text into any text editor. Most text editors allow you to paste by selecting **Edit-->Paste** from the main menu. To best view the report, use a fixed-width font like "Courier" or "FixedSys".

Copying and Pasting the Components Summary Report to a Text Editor

The utility can generate a summary report for all components used in the configuration.

1. Select **File-->Components Summary** from the main menu. The Components Summary Window displays.



2. Click Copy.
3. Paste the text into any text editor (e.g. Notepad). Most text editors allow you to paste by selecting **Edit-->Paste** from the main menu. To best view the report, use a fixed-width font like "Courier" or "FixedSys".

Components Summary Tips

- The number of reported cabinets in the summary is calculated using the zone list. If there are no zones defined in the list, the number of cabinets will be zero.
- The number of reported switches is the highest switch number used in the job configuration.
- The number of reported QIF-2000 is the highest used ID number.

Sorting Lists

You can sort lists in either in ascending or descending order.

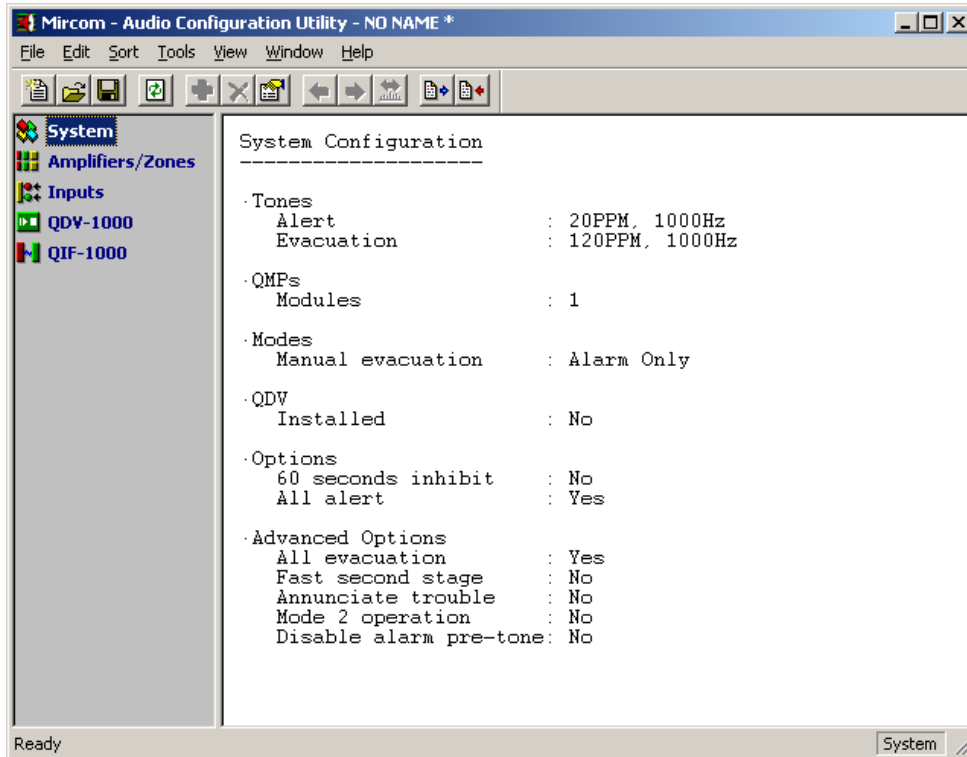
To sort a list, select a configuration from the left pane.

- Click any one of the column headers to toggle the sort direction, or
- Select **Sort** from the main menu, then select the desired column to sort by. The red up and down arrows in the menu indicate the subsequent sort order that will be performed (⬇️ Ascending, ⬆️ Descending). The blue right arrow (➡️) indicates the last used sort category.

Copying and Pasting the System Configuration Information to a Text Editor

The configuration utility allows you to copy the System Configuration information to a text editor (e.g. Notepad).

1. Click “System” in the left pane. The system configuration information displays.



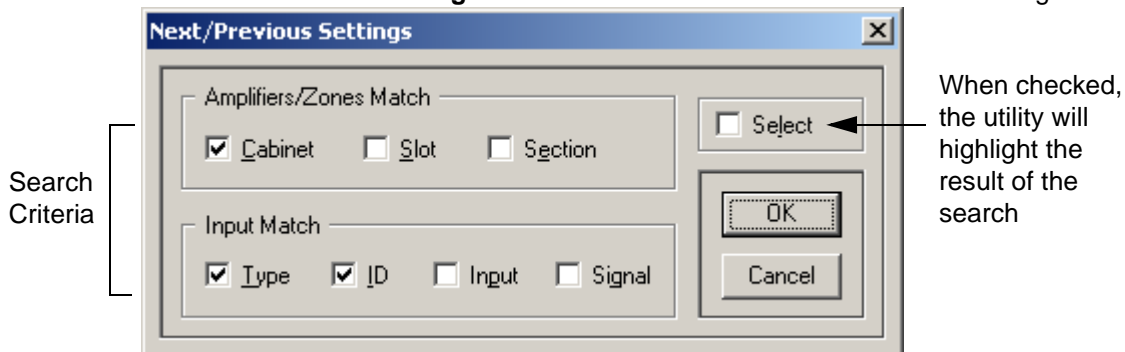
2. Select **Edit-->Copy** from the main menu to copy the configuration information.
3. Paste the text into any text editor. Most text editors allow you to paste by selecting **Edit-->Paste** from the main menu. To best view the report, use a fixed-width font like “Courier” or “FixedSys”.

Searching for System Devices with Similar Functions

You can search for zones, amplifiers, and inputs that have similar functions using the Next/Previous Settings.

To search,

1. Click “Amplifiers/Zones” or “Inputs” in the left pane. The list displays in the right pane.
2. Select **View-->Next/Previous Settings** from the main menu. The Next/Previous Settings Window displays.

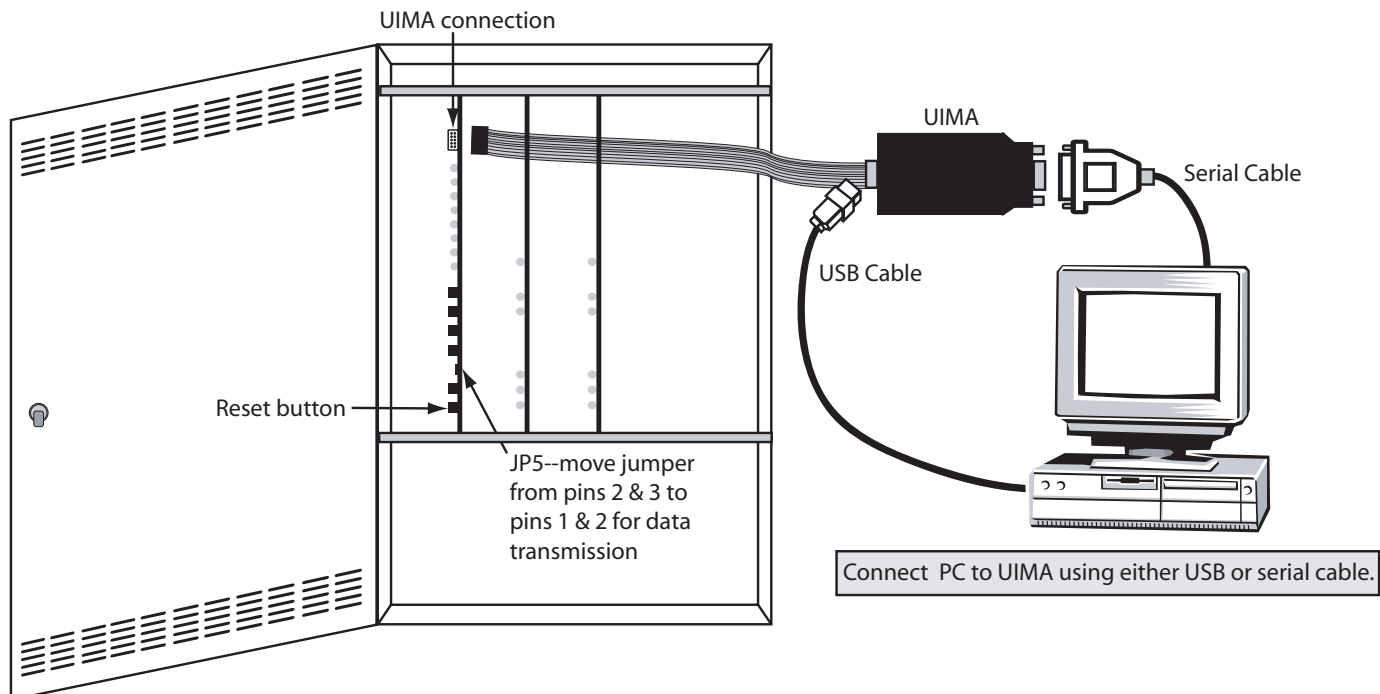


3. Select the desired search criteria by checking the appropriate boxes.
4. Click OK to continue. The utility returns to the Main Window.
5. Click a zone, amplifier, or input to select it.
6. Select **View-->Next** or **View-->Previous** from the main menu to find a zone, amplifier, or input matching the criteria you specified in the Next/Previous Settings Window. The utility will indicate the next/previous matching zone.

Connecting to the Panel

Connecting to the Panel

1. Connect your USB or serial cable to the UIMA.
2. Connect the UIMA to the programming port.



3. Move jumper JP5 from the top two jumper pins (pins 3 & 2) to the bottom two (pins 2 & 1).
4. Press the reset button. The panel will restart in configuration mode. The green AC ON LED will flash when the panel is ready for data transmission.

Disconnecting from the Panel

To disconnect from the panel,

1. Unplug the UIMA cable from the panel.
2. Move jumper JP5 from the bottom two jumper pins (Pins 2 & 1) to the top two (pins 3 & 2).
3. Press the reset button. The panel will restart in normal mode.

Serial Port Settings

To transmit data to and from the panel, the serial port settings must be configured. To configure the serial port settings, select **Tools-->Serial Port Settings** from the main menu.

The configuration utility uses a serial port on the computer to transmit the job configuration to the panel. The typical serial settings are: **9600 Baud, No Parity, 8 Data Bits and One Stop Bit**.



Note: Changing settings other than the port number will cause a failure in sending and/or getting the configuration.

Serial Port Settings Backward Compatibility

In old versions of the configuration utility, the serial port settings were stored in the configuration files. In the current software version, the settings are stored in the user profile.

When you configure the serial port for backward compatibility, the utility will follow this procedure to retrieve the serial port settings:

1. If there are settings stored in the user profile, it will use them; otherwise it will go to step 2.
2. If there is a loaded configuration, it will try to get the settings from there; otherwise it will go to step 3.
3. The last resort will be to use default values: **Port: COM1, Baud: 9600, Parity: No, Data Bits: 8, Stop Bits: 1**.

Sending and Getting a Job

In the main menu of the Configurator, select **Tools-->Send Configuration** or **Tools-->Get Configuration** from the main menu. If you have not yet configured the serial port settings, you will be prompted to do so at this time (see *Serial Port Settings* on page 15 for details).

Both when sending and getting a job, the configuration utility will validate the job configuration before beginning data transmission. It will not transmit it if there is an error.

Communication Errors

Sending the configuration

The configuration utility is expecting an acknowledgment back from the panel after the configuration has been sent. An error will occur if:

- The panel rejects the configuration. The message "The panel rejected the configuration." displays.
- The panel did not respond back within a determined period of time. The message "The panel did not respond back after sending the configuration." displays.
- The panel response is not recognized. The message "The panel response is unrecognized." displays.

Receiving the configuration

- If the panel did not respond to the configuration utility for a determined period of time, the message: "Serial communication timeout." displays.
- If the panel sends the configuration (or the configuration utility received some data), and the data was corrupted, the message "Invalid configuration." displays.
- If the received data size exceeds the expected one, the message "Serial data overflow." displays.

Serial port errors

- "Serial communication error.", indicates a failure in reading-from or writing-to the serial port.
- "Serial control command error.", indicates that the control command that was sent to the serial port has failed.

Part II: Configuring the System

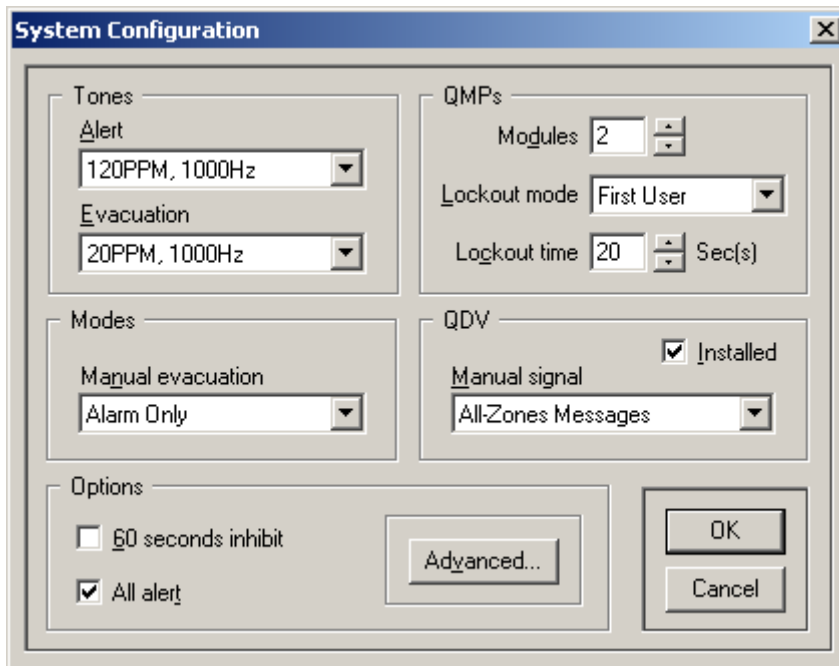
Configuring the System

Through the System Configuration Window you can

- Set alert and evacuation tones
- Select the manual evacuation mode
- Set the panel options
- Add QMPs and QDVs and set them up

Accessing the System Configuration Window

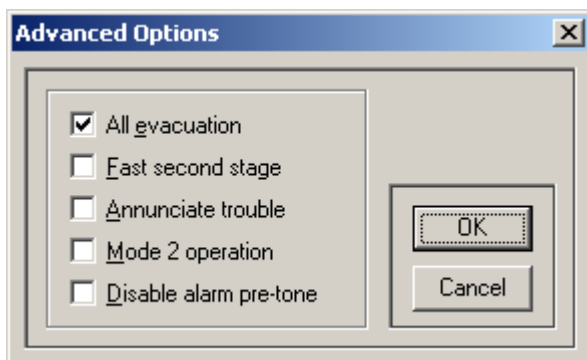
1. Select “System” from the left pane. The right pane displays the system configuration.
- Select **Edit-->Properties** from the main menu or double-click in the right pane. The System Configuration Window displays.



Note: If the QDV Installed checkbox is not checked, the QDV-1000 configuration will not be transmitted to the panel; however, you can still build the QDV configuration.

Advanced Options

You will rarely need to change the Advanced Options. To open the Advanced Options Window, click the Advanced button in the System Configuration window.



- If the All Evacuation checkbox is checked, the panel will ignore all General Alarm inputs in the Input Configuration section.
- If the Disable alarm pre-tone checkbox is *not* selected (which means that the pre-tone is enabled), and a QDV is installed, then QDV Channel-1, Part-1, *must* have a message and its repeat must be set to its maximum value (255).

Adding and Configuring Amplifiers/Zones

Understanding the Amplifiers/Zones List

To access the Amplifiers/Zones configuration list, select “Amplifier/Zones” from the left pane. The right pane displays the system zones/amplifiers.

Cab-Slot-Sec	Amplifier	PG Switch	EV Switch	AL Switch	Name
1-2-1	QAA-5160A	001	005	009	Lobby
1-3-1	QAA-5230AS	002	006	010	Floor 1
1-3-2	QAA-5230AS	003	007	011	Floor 2
1-4-1	QAA-5230A	004	008	012	Floor 4
1-4-2	QAA-5230A	013	017	021	G1
1-5-1	QAA-5230AS-525	014	018	022	Floor 3
1-5-2	QAA-5230AS-525	015	019	023	Floor 4
1-6-1	QAA-5415A				<BACKUP>
1-6-2	QAA-5415A	016	020	024	G2
1-6-3	QAA-5415A	025	029	033	Mezzanine
1-6-4	QAA-5415A	026	030	034	Party Room

Amplifier/Zones List Description

- The first column “**Cab-Slot-Sec**” shows the cabinet number, the slot number and the section number of the zone.
- The second column shows the **Amplifier** model installed in this location.
- The third, fourth and fifth columns show the **Paging, Evacuation** and **Alert Switch** numbers assigned for that amplifier section (zone).
- The last column shows the **Name** of the zone.

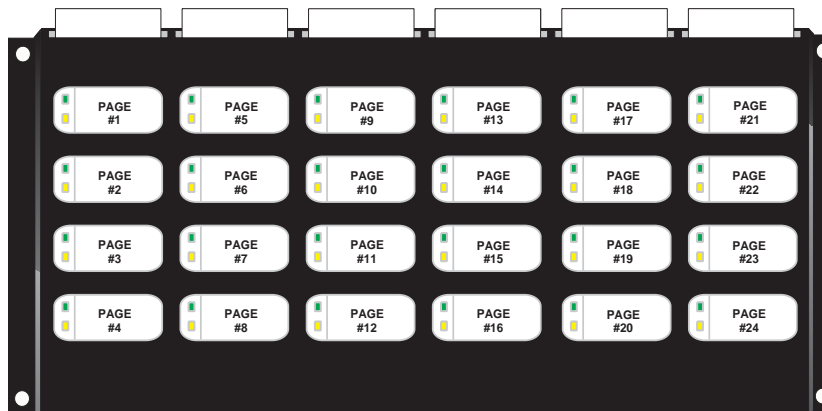
List Color Coding

Zones in the list display in colors according to their amplifier model. The backup amplifier will have a red symbol instead of the green/brown one.

Amplifier Model	Item Color
QAA-5160	Red
QAA-5230A	Brown
QAA-5230-AS	Dark Blue
QAA-5230AS-525	Light Blue
QAA-5415A	Green

Setting up the Switches

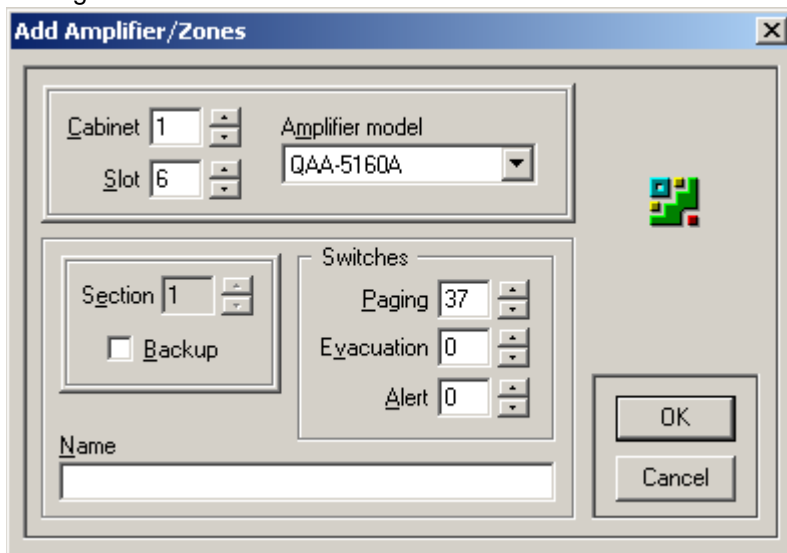
Switches are numbered according to the following diagram.



Adding Amplifiers

To add an amplifier and configure its zones,

1. Select “Amplifiers/Zones” from the left pane. The right pane displays the Amplifiers/Zones list.
2. Select **Edit-->Add** from the main menu. The Add Amplifier/Zones Window displays.
3. Edit the amplifier settings then click OK.



Add Amplifiers/Zones Window Description

- You can scroll through the amplifier sections through the Section up and down arrow buttons.
- When adding a new amplifier, the utility will automatically set all sections' paging switches to the next available un-used switches. If there are no free switches, the previously used paging switches will be used instead. The sections' Names will be empty. You are able to use one paging switch for several zones.
- A specified Paging/Evacuation/Alert Switch must not be used by the QDV-1000, a QIF-1000 or a switch input in the Inputs Configuration Window. The configuration utility will check the specified switches and display an error if they cannot be used. Note that the QDV Installed checkbox in the System Configuration Window (see page 19 for details) has no effect on this restriction.
- Paging switches can be shared amongst zones, but the Evacuation and Alert switches must be unique.

About the Backup Amplifier

There can only be *one* backup amplifier per system and it must be the *first* section on any amplifier board (some physical considerations might affect the selection decision, but this is not controlled by the utility). You can select the backup amplifier location either while adding a new amplifier or while editing an existing one. In all cases, the Backup checkbox will only be available if there is no backup amplifier in the system and you are editing the first section.

If you would like to change the backup amplifier, uncheck the Backup checkbox for the current backup amplifier before assigning another one.

Deleting Amplifiers

To delete an amplifier, Select **Edit-->Delete** from the main menu. The utility will ask you to confirm your request.

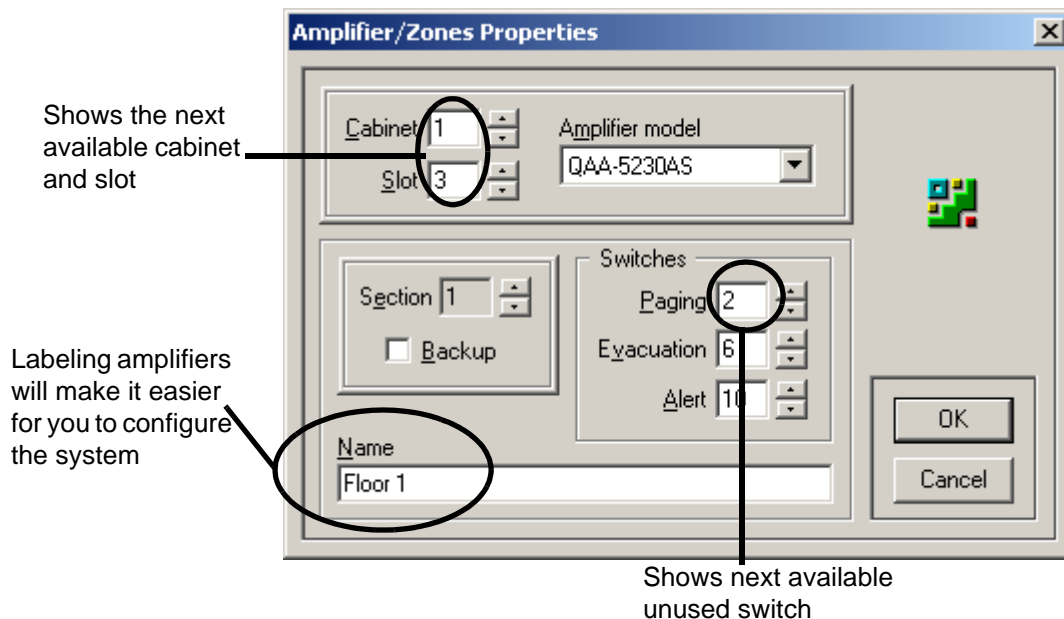


Note: When you select a zone (amplifier section) to delete, all amplifier sections in that slot will be deleted. This means that if the selected amplifier has four sections (as in the QAA-5415 model), and you delete any of its sections, all four sections will be deleted.

Editing Amplifier Properties

To modify an amplifier and its zones (sections),

1. Select "Amplifiers/Zones" from the left pane. The right pane displays the Amplifiers/Zones list.
2. Select a zone, then
 - Select **Edit-->Properties** from the main menu, or
 - Double-click it. The Amplifiers/Zones Properties Window displays.










3. Edit the Amplifier/Zones properties:
 - You can scroll through the amplifier sections through the **Section** up and down arrow buttons.
 - You can change the **Amplifier Model** (which might change the number of sections), and the **Cabinet** and **Slot** number.
4. Click OK to save the changes and return to the Main Window. The configuration utility will check the amplifier information when you click OK.

Adding and Configuring Inputs

Understanding the Inputs List

To access the Inputs configuration list, select "Inputs" from the left pane. The right pane displays the system inputs list.

Type	Signal	Switches	Description
 GA	Evacuation	04, 13, 14, 15, 16, 25, 26	General Alarm
 PGM [03]	Alert	02, 03, 04, 14, 15	
 QIF2K [01-01]	Alert	01, 02, 13, 15, 16, 25, 26	Fire on Floor 2
 QIF2K [01-01]	Evacuation	03, 04, 14	Fire on Floor 2
 SW [27]	Alert	02, 03, 04	Programmable Switch
 SW [27]	Evacuation	13, 14, 15, 16	Programmable Switch
 SW [27]	Message	01, 25, 26	Programmable Switch

Inputs List Description



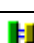

- The first column displays the input **Type**.
- The second column displays the **Signal** that the input will generate.
- The third column displays the paging **Switches** assigned for that input.
- The fourth column displays the **Description**.



Note: The switches column indicates the *paging* switch numbers that you designate to the listed input when you set up the amplifier properties (see previous page).

List Color Coding and Symbols

Items in the list display in colors according to their signal type.

Signal	Item Color	Symbol	Input Type
Evacuation	Red		General Alarm
Alert	Brown		Programmable
Paging	Blue		QIF-2000
Message	Green		Switch

About Switch Inputs

When adding a new amplifier, the utility will automatically set all sections' switches to the next available un-used switches. If there are no free switches, the value of 1 will be used instead.

When adding new switch inputs, the utility will automatically show the next available un-used switch. If there are no available switches, the utility will display the value of 1. The specified switch must not be used by the QDV-1000, a QIF-1000, or a zone. The utility will check the specified switch and prompt you if it cannot be used. The QDV Installed checkbox in the System Configuration Window (see page 19 for details) has no effect on this restriction.



Note: Only switches 1 to 72 are allowed to be used as input switches.

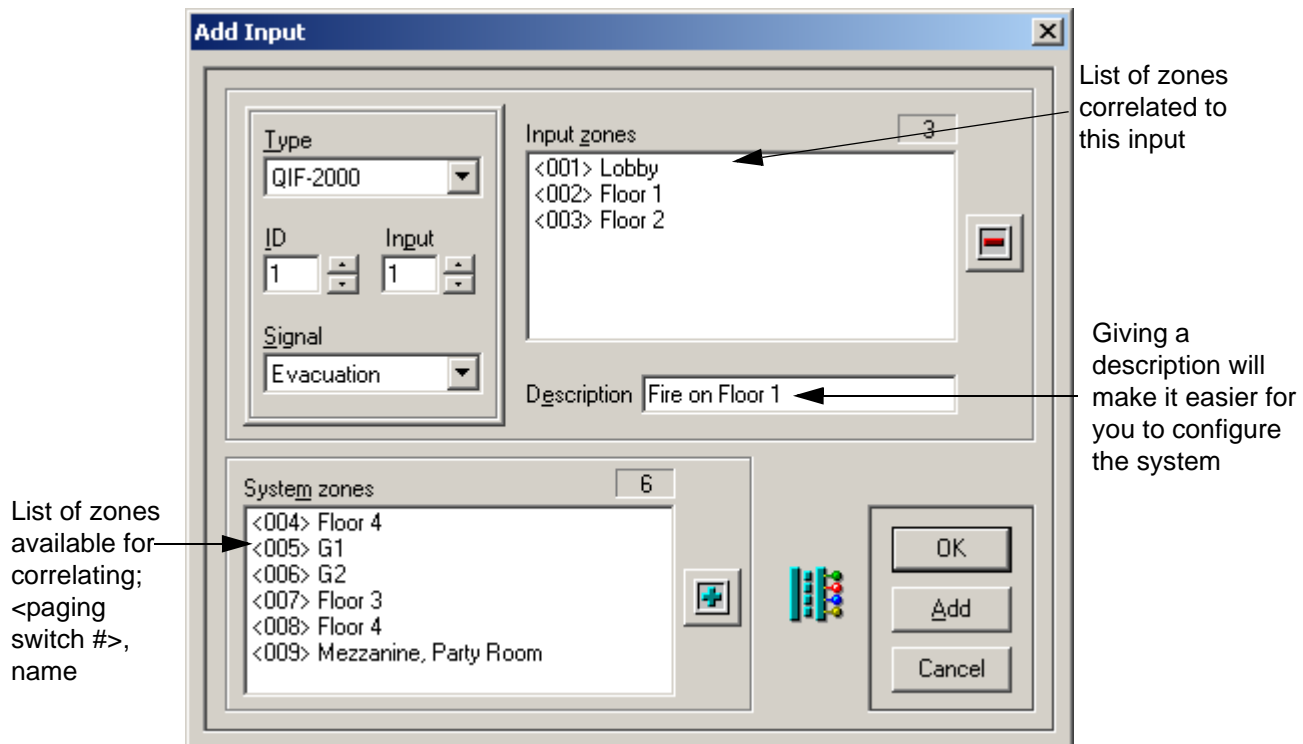
About Programmable Input #4



If there is a QDV installed and any of its messages repeat time is not set to 255 (forever), Programmable Input #4 cannot be used. This is because of the physical connection between that input and the QDV. Although the utility will allow you to configure this input, the validation process will reject it if the above condition is true.

Adding Inputs

To add an input,

1. Select "Inputs" from the left pane. The right pane displays the Inputs list.
2. Select **Edit-->Add** from the main menu. The Add Input Window displays.
3. Edit the input settings.



- To **add** zones to the input, either select the desired zone names from the System Zones list and click the  button, or double-click the desired zone.
 - To **delete** zones from the Input Zones, either select the zone names from the Input Zone list and click the  button, or double-click the desired item. The zones to be removed will be moved back to the System Zones list.
4. When you have finished editing the settings,
 - Click Add to add the current input module and begin configuring another one, or
 - Click OK to save your settings and return to the Main Window.

Editing Input Properties

You can change any input parameter by selecting the input from the Input list in the Main Window and selecting **Edit-->Properties** from the main menu.

Adding and Configuring the QDV-1000

Understanding the QDV-1000 List

To access the QDV-1000 properties list, select "QDV-1000" from the left pane. The right pane displays the QDV-1000 properties list.

Type	Part 1	Part 2	Part 3	Repeat	Switch	Description
Channel 01						Paging Channel
Channel 02	002-001			001		Evacuation Channel
Channel 03	003-001			001		Alert Channel
Channel 04	004-001			001		Message Channel
SW Msg 01	001-001	004-001		001	028	
SW Msg 02	005-001	006-001		005	031	
SW Msg 03						
SW Msg 04						
SW Msg 05						
SW Msg 06	008-001			001	032	
SW Msg 07						
SW Msg 08						
SW Msg 09						
SW Msg 10						
SW Msg 11						

Annotations for SW Msg 06:
 - Arrow from "message part number" points to "008" in "008-001".
 - Arrow from "number of times message repeats" points to "001" in "008-001".

QDV-1000 List Description

The first four rows list the messages for channels 1 through 4, and the remaining rows list the manual switch messages. Used channels are highlighted in blue; Unused channels are grayed out.

The list displays 7 columns:

- The first column displays the message **Type**
- The second to fourth columns display **Parts 1, 2, and 3** of the message
- The fifth column displays the number of times the entire message **repeats**
- The sixth column displays the manual **switch** number
- The seventh column displays the message **description**

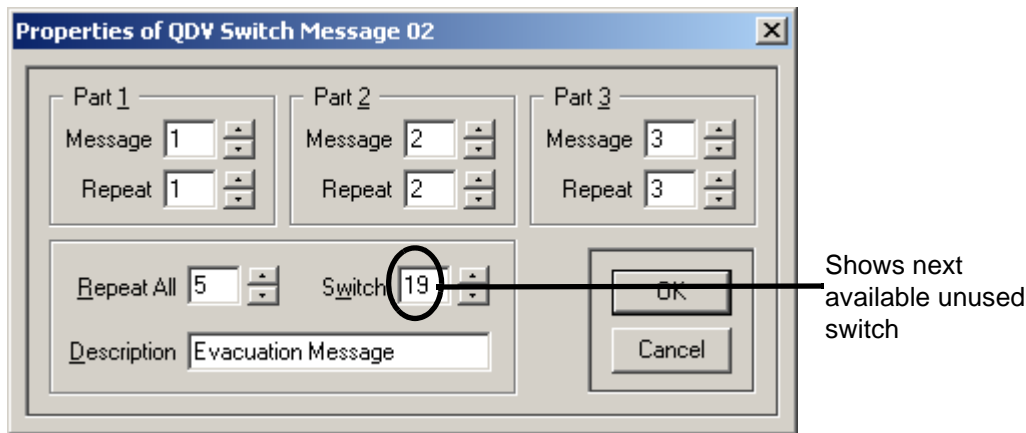
Part 1, Part 2 and Part 3 columns have the following format: **xxx-yyy**, where **xxx** is the message part number, and **yyy** is the part repetition times.

Channel messages do not have switches assigned to them and you cannot change their description.

Editing Manual Switch Messages

To edit a message,

1. Select "QDV-1000" from the left pane. The right pane displays the QDV-1000 message list.
2. Click on a message in the QDV-1000 list and select **Edit-->Properties** from the main menu. The Message Properties Window displays.



3. Enter a message number in Part 1. Continue to set up Parts 2 and 3 (if necessary), as well as the other switch settings.
4. Click OK to save your settings and return to the Main Window.

Tips for Editing Manual Switch Messages

- The QDV-1000 configuration will be sent to the panel only if the QDV Installed checkbox is checked in the System Configuration window. Even if this checkbox is not checked, you will still be able to setup the QDV-1000 configuration at all times.
- The list will show all QDV messages even if they are not configured. Deleting a message will only clear its contents (resets it). Setting Part 1 Message to 0 will also clear the message.
- When editing a new switch message, the configuration utility will automatically show the next available un-used switch. If there are no available switches, the utility will display the value of 1. The specified switch must not be used by a switch Input, a QIF-1000 or a zone. The utility checks the specified switch and tells you if it cannot be used. Note that checking or unchecking the QDV Installed checkbox in the System Configuration Window (see page 19 for details) has no effect on this restriction.

Adding and Configuring a QIF-1000

To access the QIF-1000 properties list, select “QIF-1000” from the left pane. The right pane displays the QIF-1000 properties list.

ID	Switch	Description
01	035	QIF #1
02		<LOCAL>
03	036	QIF #3

QIF-1000 List Description

The list displays three columns:

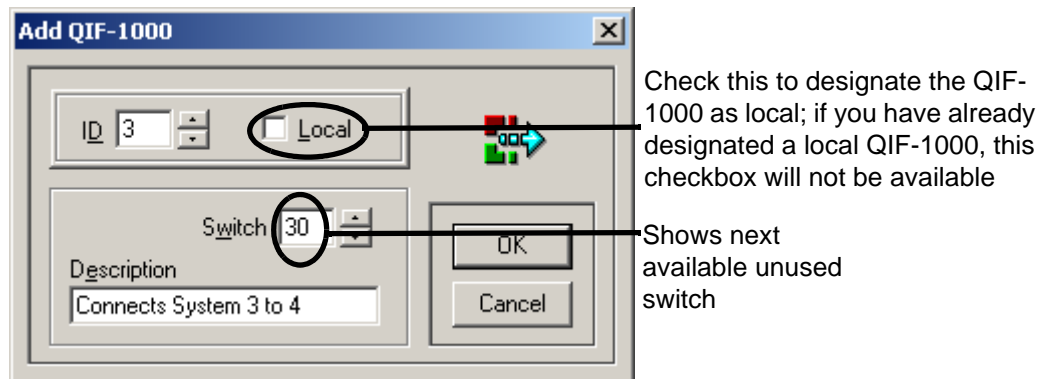
- The first column displays the **ID**.
- The second column displays the assigned **Switch**.
- The third column displays the **Description**.

Unlike other listed items, the local QIF-1000 item has a red symbol and its text is blue.

Adding a QIF-1000

To add a QIF-1000,

1. Select “QIF-1000” from the left pane. The right pane displays the QIF-1000 message list.
2. select **Edit-->Add** from the main menu.



3. Edit the QIF-1000 settings as desired. Click OK to save your settings and return to the Main Window.

Tips for Adding a QIF-1000

- The Local checkbox will only be available if the current device is designated as local or no local ID has been added.
- The utility checks if the ID you specified already exists. If it does, you will be prompted to change it. When adding a new QIF-1000, the utility will automatically display the next available un-used switch. If there are no available switches, the utility will display the value of 1.
- The switch number you specify for the QIF-1000 must not be used by any input, zone, or the QDV. The configuration utility will check the switch number you chose and tell you if it cannot be used. Checking or unchecking the QDV Installed checkbox in the System Configuration Window has no effect on this restriction.
- Although the utility allows you to change and configure QIF-1000 IDs as desired, they must start at 1 and they must be contiguous. The validation process checks the integrity of the QIF-1000 local and remote IDs.



Note: If you are adding any QIF-1000 to the system, there should be at least *two*: one local and one remote.

Editing the QIF-1000 Properties

To edit a QIF-1000,

1. Select "QIF-1000" from the left pane. The right pane displays the QIF-1000 message list.
2. Select **Edit-->Properties** from the main menu. The QIF-1000 properties window displays. The Local checkbox will only be available either if the edited device is designated as local or no local ID is been added.
3. Edit the QIF-1000 settings as desired. Click OK to save your settings and return to the Main Window.

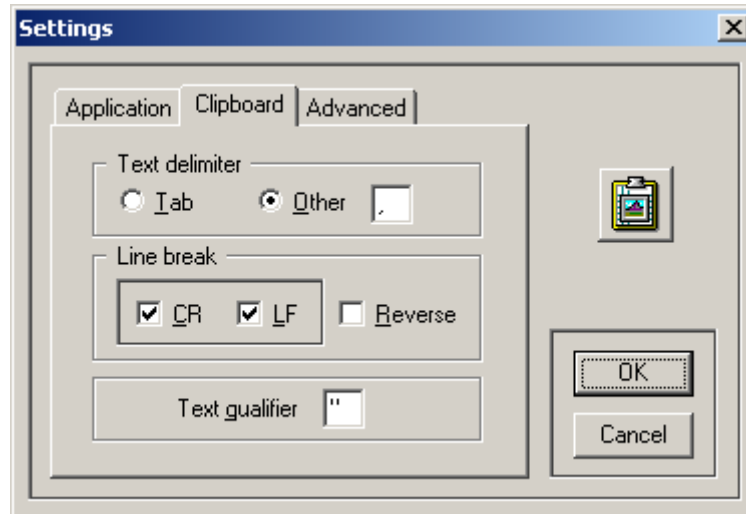
Setting a Local QIF-1000

To set a QIF-1000 as local,

1. Select "QIF-1000" from the left pane. The right pane displays the QIF-1000 message list.
2. Select **Edit-->Properties** from the main menu. The QIF-1000 properties window displays. The Local checkbox will only be available either if the edited device is designated as local or no local ID is been selected. If another QIF-1000 was already designated as local, you must un-select the checkbox from the other QIF-1000 and check it in the new one.

Appendix A: Setting Delimited Text Format Preferences

You can set the delimited text format preferences when copying text from the configuration utility to the Windows Clipboard. To set these preferences, select **Tools-->Settings** from the main menu, then select the Clipboard tab.



Clipboard Settings Window Description

- The **Text Delimiter** is the character used to separate the list columns.
- The **Line Break** is a format used to terminate each row in the list. The standard line-break format is Carriage-Return + Line Feed (CR\LF). Some operating systems use a reversed line-break format (LF\CR), in this case select the **Reverse** option. All Microsoft operating systems use the CR/LF sequence and *not* the reversed one.
- The **Text Qualifier** is the character used to encapsulate each column item. If a text qualifier is needed, it must be a character that is not used in the text of the list.

The following example shows some copied zones using the above settings:

```
"Type", "Signal", "Switches", "Description"
"PGM [03]", "Evacuation", "02, 04, 06, 08, 09", ""
"QIF2K [01-01]", "Alert", "01, 04, 06, 08, 09", "Fire on Floor 2"
"QIF2K [01-01]", "Message", "05", "Fire on Floor 2"
"QIF2K [01-02]", "Alert", "01, 04, 07, 08, 09", "Fire on Floor 1"
```

The first line is the columns' header. The text delimiter is a comma, the text qualifier is a quotation mark, and the line-break is CR\LF (not visible in the example).

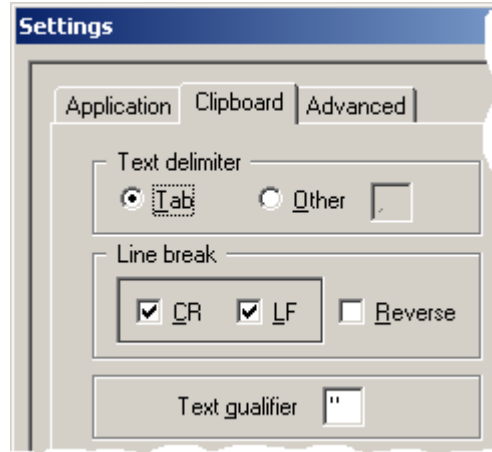
Appendix B: Copying and Pasting Into Excel

If you want to copy list items to Microsoft Excel, follow either Procedure 1 or 2 below.

Procedure 1: Pasting Directly into Excel

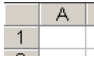
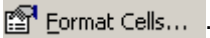
In the QX-5000 Configuration Utility...

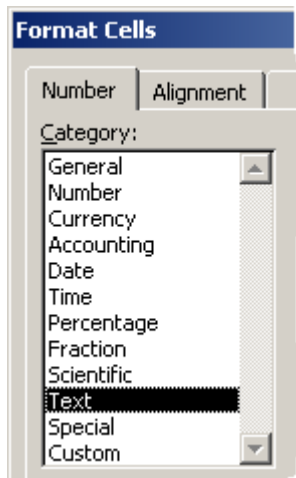
1. Select **Tools-->Settings**, then click the Clipboard tab.
2. Set the application clipboard settings to use Tab for the Text Delimiter, " for the Text Qualifier, and set the Line Break to CR/LF, as shown below:



3. Follow steps 1 and 2 in *Copying and Pasting Lists to a Text Editor* on page 11 to copy the desired items.

In Excel...

4. Select all columns and rows by clicking the upper-left corner of the sheet  or by pressing Ctrl+A.
5. Right-click on the selected cells, and select **Format Cells** from the popup menu .
6. Select the Number tab, then select Text in the Category list. Click OK to continue.

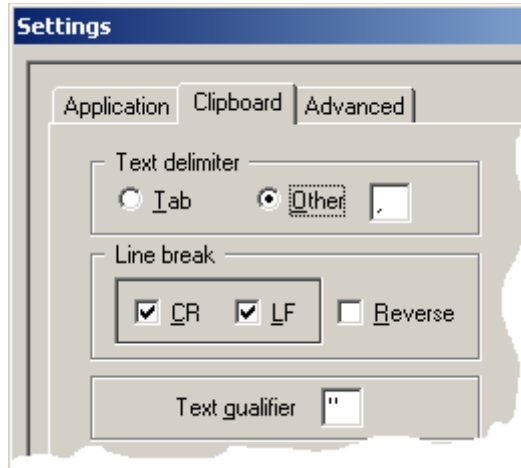



7. Un-select all cells and select the cell in which the pasted information will start.
8. Select **Edit-->Paste** from the main menu. The copied list displays in the spreadsheet table.

Procedure 2: Importing a Text File Into Excel

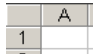

Copying and Pasting into Notepad

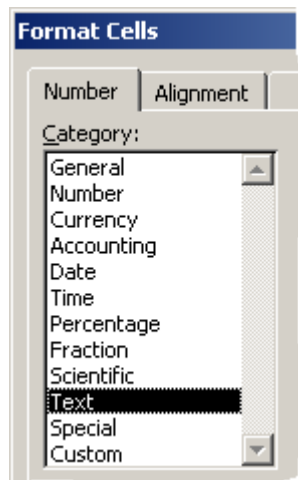
1. Select **Tools-->Settings**, then click the Clipboard tab.
2. Set the clipboard settings to use Comma for the Text Delimiter, Quotation Mark for the Text Qualifier, and set the Line Break to CR/LF.



3. Follow steps 1 and 2 in *Copying and Pasting Lists to a Text Editor* on page 11 to copy the desired items.
4. Paste the copied information in Notepad  (notepad.exe) and save it with the name QX5000_config.txt (or another name if you'd prefer).

Importing the Text File into Excel

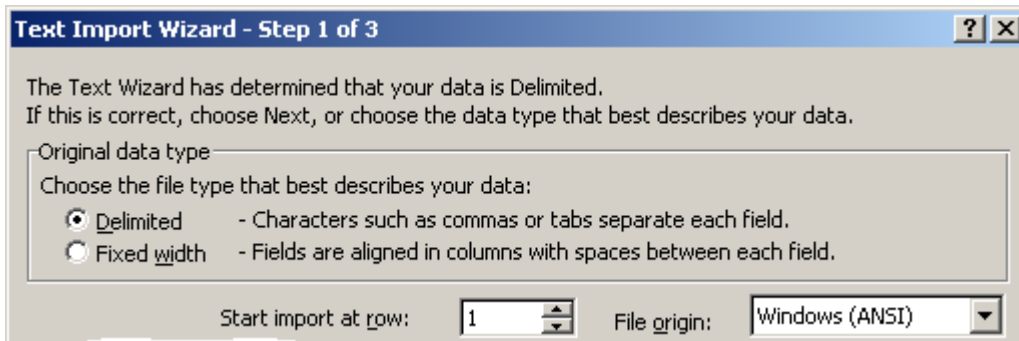
5. Open Excel.
6. Select all columns and rows (by clicking the upper-left corner of the sheet  or by pressing Ctrl+A).
7. Right-click on the selected cells, then select **Format Cells** from the popup menu .
8. Select the Number tab, then select Text in the Category list. Click OK to continue.



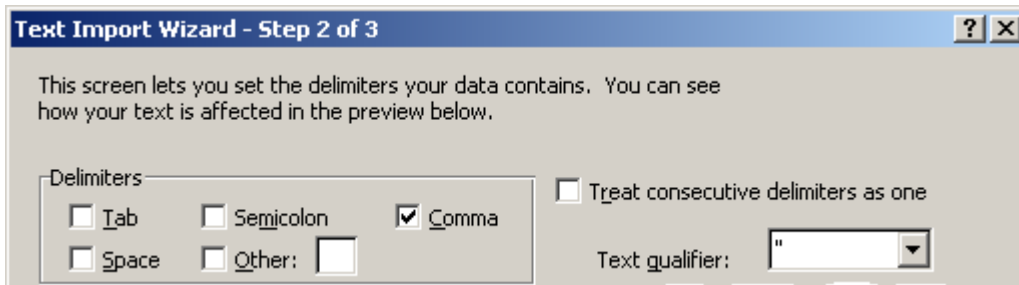
9. Un-select all cells and select the cell in which the pasted information will start.
10. Select **File-->Open**. The Open Window displays.
11. Go to the Files of Type drop-down list at the bottom of the Open window and select Text Files.
12. Locate the text file you saved in Notepad (e.g. QX5000Config.txt). Click OK to continue. The Text Import Wizard Window displays.

Formatting the Imported Text

13. Select the following options to format the imported text:
a) Original data type: Delimited. Click Next to continue.



- b) Delimiters: Select *only* the Comma option.
c) Text qualifier: Select “, and then click Finish.



Notes

Notes
