

PRODUCT UPDATE BULLETIN

PUB-BAS-001

May 11, 2020



OPENBAS SYSTEM DESIGN STUDIO

Mircom is releasing upgraded Configurator software.
The new version number follows:

CONFIGURATOR SOFTWARE	COMPATIBLE FIRMWARE	VERSION
System Design Studio	All OpenBAS NX controllers and OpenBAS-HV-LEARN	1.0.2

*Note: Please read this **entire document** before upgrading systems to ensure all compatibility issues are addressed and to ensure correct upgrade procedures are followed.*

New Features

- Get back to work faster with the ability to import and export IP connection lists
- Connect from more places with Hostname and Port support
- Easily find answers to your questions with the new LT-6675 System Design Studio User Guide (within your C:\OpenBAS\Documents\SDS Documents directory after installation)
- Work more efficiently with Notepad++ integration (syntax highlighting, multiple tabs, advanced find & replace and many more)
- Wait less while configuring controllers from script with Quick Configuration

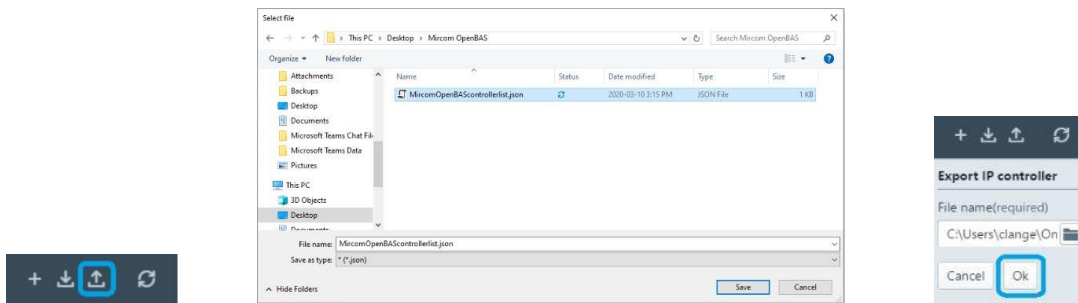
Enhancements

- Rapidly test and debug logic with significant workflow improvements to the Values and trends->Names table
- Loading time has improved (specially connecting to slave controllers)

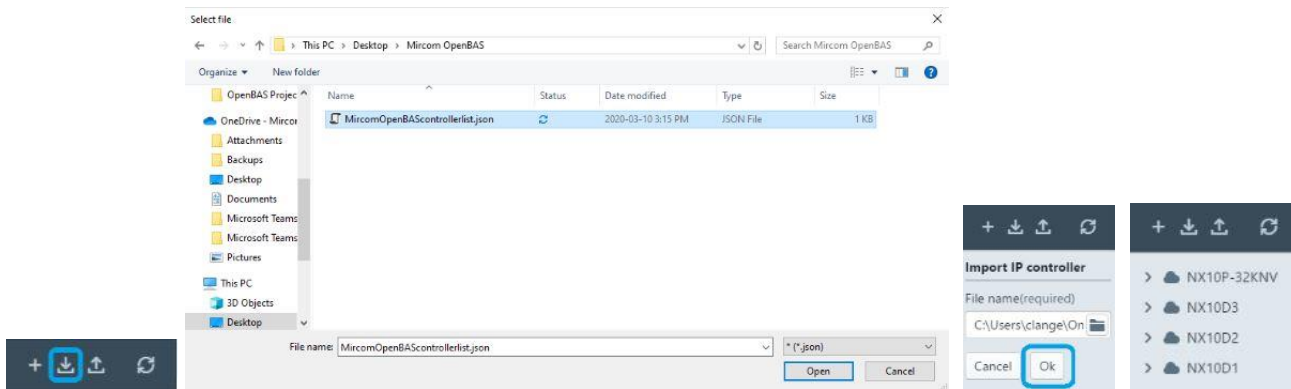
Import and export IP connection list

After connecting to multiple controllers over IP, the up-arrow button located at the top of the side panel can be used to save a *.json file to disk that allows for quick and easy reconnection to the same set of controllers at a future time, or from another computer with the System Design Studio installed.

1. To export a list of the current IP based connections, click the up-arrow button, browse to an appropriate directory, enter a descriptive file name and click Save followed by Ok. The file will be created appropriately.



2. To import and connect to controllers previously exported to an IP connection list, click the down-arrow button, browse to the appropriate *.json IP connection list file, and click Open followed by Ok. The System Design Studio will attempt to connect to all controllers, populating the side panel with each controller that is responding.



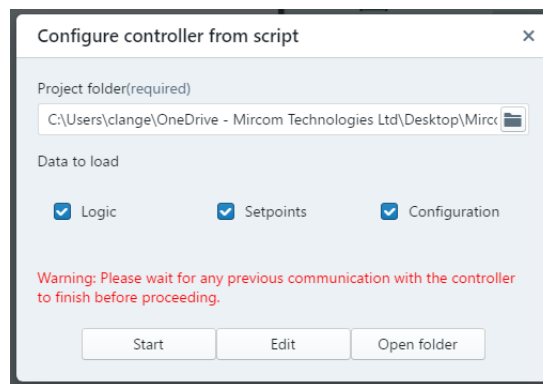
3. USB connections are not included in the exported IP connection list file and any existing USB connections will remain in the side panel after importing an IP connection list file.
4. Existing IP based connections will remain in the side panel after importing an IP connection list file.

Edit script with Notepad++

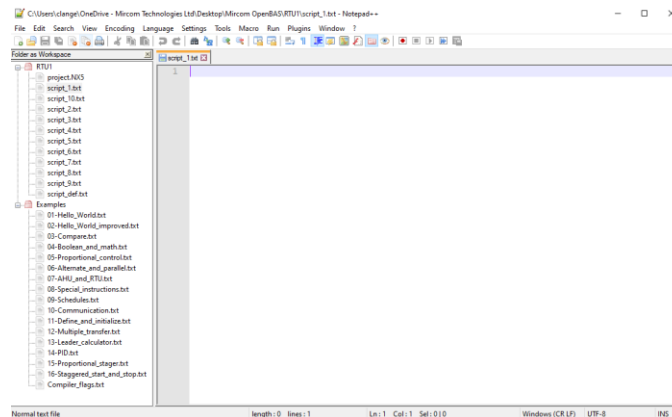
Scripts can be written in any software that can read and write *.txt files however installing Notepad++ comes with many advantages such as syntax highlighting, multiple tabs and advanced find & replace features to name a few.

Open project folders in Notepad++

- If needed, download and install Notepad++ from <https://notepad-plus-plus.org/>
- After connecting to a controller within the System Design Studio, right click the controller in the side panel and select *Configure from script*.
- Under project folder, browse to an existing project folder, or create a new project folder, and click *Select folder*.
- Close any open Notepad++ instances and click *Edit*.

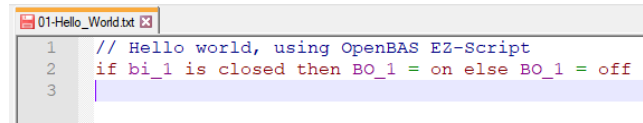
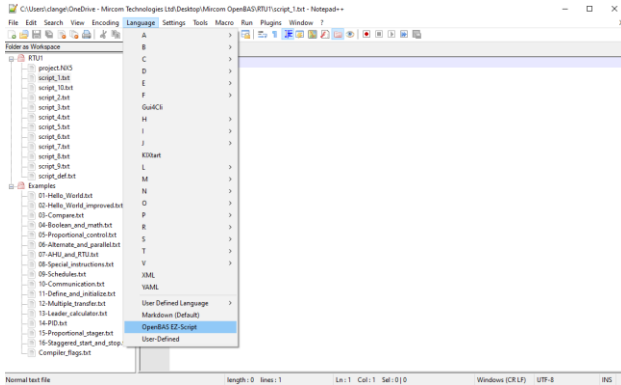


- The System Design Studio will create empty script files if they do not exist within the selected project folder and then will open the project folder as a workspace in Notepad++ along with an “Examples” workspace.



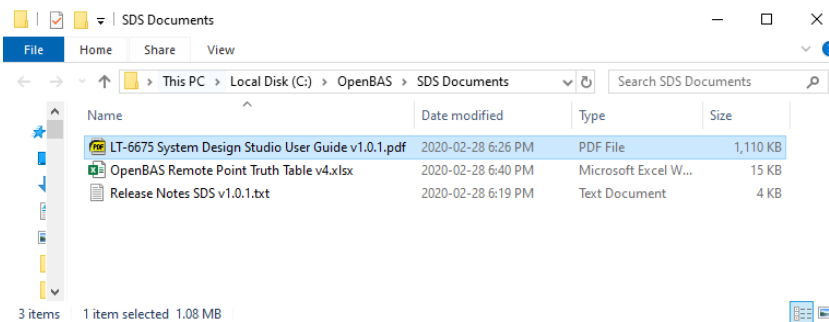
Enable syntax highlighting within Notepad++

- The System Design Studio will automatically install a custom language file into the Notepad++ installation folder however the user needs to select the OpenBAS EZ-Script language before it will be used.
- Open any script file such as script_1.txt and then click Language->OpenBAS EZ-Script.



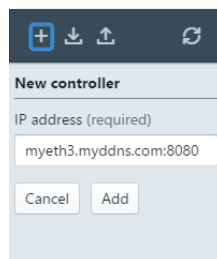
System Design Studio user guide

After installing the System Design Studio 1.0.2, many commonly needed documents and files are placed into an OpenBAS folder within the root of your C:\ drive, including the user guide. Using Windows Explorer, browse to C:\OpenBAS\Documents\SDS Documents and double click the PDF file named "LT-6675 System Design Studio User Guide v1.0.2" to open the user guide in your default PDF viewer. Be sure to enable the bookmark window in your PDF viewing software to make searching through the user guide easier.



Hostname and Port Support

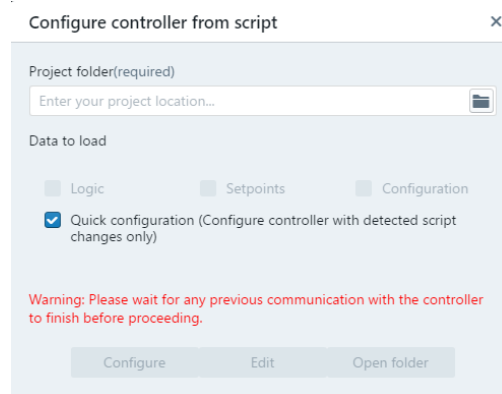
When entering an IP address, you can now enter a Hostname and Port number (optional) if needed. Hostnames allow for the use of DDNS services and specifying a port number allows for the use of port forwarding. When entering an IP address or hostname, do not include "HTTP://", "HTTPS://", or "HTTP://", "HTTPS://" at the beginning.



EZ-Script - Quick Configuration

After right clicking a controller in the side panel and selecting the *Configure from script* option, there is now a *Quick configuration* check box under *Data to load*. When configuring a controller with the *Quick configuration* option checked, the script will be analyzed for changes (as well as previous changes not successfully configured on the controller) and only the changed sections of the script will be configured on the controller. This significantly decreases the time it takes to configure a controller when only making small changes.

Note: This functionality relies on files that are created and stored within the selected project directory which may cause some unintended consequences if using the same project folder on multiple controllers. In this case, deselect Quick configuration and check the appropriate sections as needed.



Compatibility Chart

Below table shows the System Design Studio compatibility with OpenBAS hardware.

SYSTEM DESIGN STUDIO	SUPPORTED CONTROLLERS	FIRMWARE VERSION
1.0.2	All "NX" controllers (OpenBAS-xx- NX xxxx) and OpenBAS-HV-LEARN	3.04.0+
1.0.1	All "NX" controllers (OpenBAS-xx- NX xxxx) and OpenBAS-HV-LEARN	3.04.0+
1.0.0	All "NX" controllers (OpenBAS-xx- NX xxxx) and OpenBAS-HV-LEARN	3.0.0+

Did You Know?

You can download OpenBAS software:

<https://mircom.com/technical-support/documents-firmware-software-downloads/openbas-downloads/>

We have FAQ's (Frequently Asked Questions) to troubleshoot our products:

<https://mircom.com/technical-support/mircom-frequently-asked-questions/>

We Want Your Feedback

We are always looking for your feedback on our Products and Solutions.

- Suggestions, Ideas, Needs, Problems
- Project Wins & Losses
- Case Studies & Installation Photos
- Sales & Marketing Tools
- Anything else that help our business grow together

If you have any questions or comments, please contact us directly at: pm@mircomgroup.com