

2022 PRODUCT RELEASES



Mircom®

PUB-MGC-23-001

NEW PRODUCTS RELEASED IN 2022

TABLE OF CONTENTS

MIX-4003-S SOUNDER BASE	3
MIX-4003-R RELAY BASE	3
MPS-800 SERIES CONVENTIONAL MANUAL PULL STATIONS	4
MPS-800 SERIES ADDRESSABLE MANUAL PULL STATIONS	4
DSPL-2440DS GRAPHIC DISPLAY MODULE	5
FDX-008W/KI FAN DAMPER MODULES	5
INX-10A & INX-10AC INTELLIGENT BOOSTER POWER SUPPLY	6
FIRE-LINK3 WIRELESS NETWORK SYSTEM	7
FX-MNS-6000 FIRE ALARM AND EMERGENCY COMMUNICATION SYSTEM	8
OPEN GRAPHIC NAVIGATOR - VERSION 3.7	9
TX3-TOUCH-S22-E TOUCH SCREEN TELEPHONE ACCESS	10
TX3 TOUCH SOFTWARE - VERSION 2.13.11	10
TX3-PL-ENCL POSTAL LOCK ENCLOSURE	11
3012E ELEVATOR RESTRICTION RELAY CARD	11
TX3 PRODUCTS WITH -256 SUFFIX	12
TX3-CONFIGURATOR - VERSION 2.13.11	12
SYSTEM DESIGN STUDIO - VERSION 1.3.0	13
SYSTEM MANAGEMENT STUDIO - NIAGARA 4.10U4	14





FIRE DETECTION & ALARM

MIX-4000 SERIES INTELLIGENT DEVICES AND PROTOCOL



MIX-4003-S SOUNDER BASE

The MIX-4003-S sounder base provides localized alarm sounding capability for the MIX-4000 family of fire detection devices.

It can be used in place of external sounders to minimize installation cost and footprint while allowing individual control of signal rate and on-off state for each device.

The MIX-4003-S must be used with a compatible MGC control panel. Operational mode and levels are selected at the fire alarm panel through the MGC MP configuration tool.

Features:

- Multiple options of tone patterns
- Three-pulse temporal pattern fire alarm signal required by NFPA 72
- Two volume levels: low and high

[MORE DETAILS](#)

MIX-4003-R RELAY BASE

The MIX-4003-R relay base provides one form C (SPDT) contact rated at 2A at 30Vdc, or 0.5A at 125Vac and a compatible panel can switch discrete contacts by command.

Circuit connections to the relay contacts are not supervised by the base. The MIX-4003-R supports group activation capability for fast reaction time.

The MIX-4003-R must be used with a compatible MGC control panel. The device can control one independent circuit while using one address.

Features:

- Compatible with isolated and non-isolated detectors
- Designed to meet UL268/ULCS529 requirements for smoke detectors
- Designed to meet UL521/ULC S530 requirements for heat detector

[MORE DETAILS](#)



FIRE DETECTION & ALARM

MPS-800 SERIES MANUAL PULL STATIONS



Mircom's MPS-800MP(U) Series Fire Alarm Manual Pull Stations provide manual fire alarm activation. In compliance with the Americans with Disability Act (ADA), the pull station can be operated with a closed-fist and uses raised symbols and icons instead of printed text for universal recognition.

Constructed of high-quality polycarbonate resin thermoplastic "LEXAN", these devices can support high temperatures without deforming.

The pull stations can be mounted on a single gang backbox with wiring accessible from the front, making it easy to install.

CONVENTIONAL MANUAL PULL STATIONS

- Available as single stage dual action
- Completely made of LEXAN material
- Temperature range from -40°C ~ 66°C (-40°F ~ 150°F)
- Closed-fist operation (ADA – Americans with Disability Act)
- Symbols are raised to be recognized by touch
- Mounts on a single gang backbox
- Accessible from the front for wiring while mounted making it easy to install
- Indoor/Outdoor use



[MORE DETAILS](#)

ADDRESSABLE MANUAL PULL STATIONS

- Available as single or two stage dual action
- Compatible with FX-400 Series and Flex-Net FX-4000N Fire Alarm Panels
- Completely made of LEXAN material
- Temperature range from 0°C ~ 49°C (32°F ~ 120°F)
- Closed-fist operation (ADA – Americans with Disability Act)
- Symbols are raised to be recognized by touch
- Mounts on a single gang backbox
- Accessible from the front for wiring while mounted making it easy to install
- Alarm LED is viewable from the front for easy trouble shooting
- Indoor use only



[MORE DETAILS](#)



FIRE DETECTION & ALARM

INTELLIGENT MODULES

DSPL-2440DS GRAPHIC DISPLAY MODULE



The DSPL-2440DS Main Display Module provides 24-line x 40-character backlit LCD display for the Flex-Net Series.

This module was designed with high resolution and improved contrast, making it easily readable in different lighting conditions.

This main display offers a user-friendly menu, displaying all messages for service and common control buttons with selector switches and LEDs for System Reset, Signal Silence, Fire Drill, Acknowledge, General Alarm, Lamp Test, A.C on, Pre-Alarm and Ground Fault.

Features:

- For service, display shows all messages
- Backlit display and user-friendly Menu
- Common Control buttons with selector switches and LEDs
- Four Status Queues: Alarm, Supervisory, Trouble and Monitor



[MORE DETAILS](#)

FDX-008W/KI FAN DAMPER MODULES

Connected to the main display or remote shared display, the fan damper modules provide automatic control of fans and/or dampers based upon smoke detector inputs. LEDs can be setup to monitor the progress of the smoke in the same manner as on a standard fire alarm display.

Features:

- FDX-008W provides switch control and LED indication of 8 fan damper zones
- FDX-008WKI provides switch control of 7 fan damper zones with terminals for a key switch
- Compatible with Flex-Net & FX-2000 Fire Alarm Control Panels
- Tested and approved under the following standards UL 864, ULC S527, NFPA 72, 101, 90A, 92, (Smoke Control Category)



[MORE DETAILS](#)



FIRE DETECTION & ALARM

INTELLIGENT BOOSTER POWER SUPPLY



NYC
Fire Dept



INX-10A & INX-10AC

The INX-10A(C) extends the power capabilities of existing notification appliance circuits as well as provides power for other ancillary devices.

Features:

- Works as NAC expander of any UL/ULC listed 24VDC conventional fire alarm control panel
- 10 Amp output
- 120V 60Hz / 240V 50Hz operation
- Five Class B (Style Y) or Class A (Style Z) synchronized output circuits
- 2.5 Amp max. current per output
- INX-10AC Mounts into the BB-5008 or BB5014 enclosure

Enhancements:

- Works on the addressable initiating circuit (SLC/ DCL) of the listed compatible Intelligent fire alarm control panels
- Compatible with the following panels: FX-4000N Series, FX-2000N Series, FX-2000 Series, FX-401, FX-400, FX-3500 & FX-3318
- Supports multiple intelligent protocols, MGC Protocol and Classic Loop Interface Protocol (CLIP)



[MORE DETAILS](#)



FIRE DETECTION & ALARM

WIRELESS NETWORK FIRE ALARM

FIRE-LINK3



Mircom's Fire-Link3 offers a fast, clean and cost-effective wireless fire alarm audible signaling solution for multi-residential buildings that are in need of a fire alarm audibility upgrade.

Inter-device communications is accomplished wirelessly using an extremely robust and secure mesh network technology. The two main system components are the Zone Controller (ZC) and the Wireless Input-Output unit (WIO). The Zone Controllers can be daisy chained and installed one per floor in the building. Zone Controllers can be connected using either addressable loops or NAC (bell) circuits to the Fire Panel.

Features:

- Compatible with the following Mircom fire alarm control panels FleX-Net, FX-2000, FX-3500, FX-3318, FX-4000N, FX-400/401 and Secutron MMX, MR-3500 and MR-3318 that have addressable SLC loops using addressable devices in CLIP mode only
- Connects to any fire alarm panel with conventional contacts
- Wireless connection to notification devices
- Supports Single and Two stage notification
- Battery backup
- Configurable Trouble, AC Fail, and alarm relay outputs
- UL 864 / ULC S527 Listed



[MORE DETAILS](#)



FIRE DETECTION & ALARM

NETWORK FIRE ALARM & EMERGENCY COMMUNICATION

FX-MNS-6000

Mircom's FX-MNS-6000 Network Fire Alarm and Emergency Communication system offers modular components for network systems providing a wide variety of applications. This fire alarm and audio system provides zoned emergency multi-channel digital audio with emergency paging and fire evacuation.

Features:

- Supports up to 10 audio cabinets (1 main plus 9 expansion audio cabinets) per node
- Maximum of 575 Watts per expansion cabinet and total wattage of an audio cabinet per node is up to 5575W (400W + 9 X 575W)
- Up to 100 audio zones per node, 4788 audio amplifiers per Network system
- Based upon proven technology of FleX-Net and utilizes many FleX-Net modules
- Introduces digital amplifiers for a clearer and crisper sounding audio
- Flexible modular 25 Volt and 70 Volt amplifiers with options of audio wattage combinations per amplifier (1 X 100W, 2 X 50W, 1 X 75W + 1 X 25W, 4 X 25W)
- More powerful per amplifier module of up to 100W per amplifier module compared to 60W per amplifier module in Mircom's QX-5000 audio systems
- Distributed audio system for brand new systems as well as existing systems' expansion
- Distributed audio allows the customer to distribute audio expansion cabinets throughout the fire alarm system without adding an additional node
- Four audio Channels EVAC, Alert, Paging and External Audio
- Supports 24-hour background music from external audio source and each amplifier can play back on a separate audio channel



NYC
Fire Dept



[MORE DETAILS](#)



FIRE DETECTION & ALARM

GRAPHICS SOFTWARE SYSTEMS

OPEN GRAPHIC NAVIGATOR - VERSION 3.7



Open Graphic Navigator (OpenGN) is a centralized building management software that provides building or campus monitoring. As a powerful integration tool, OpenGN allows operators to monitor and control multiple fire and security networks remotely.

With unparalleled graphical experience in 2D and 3D modeling, OpenGN quickly identifies the event location by building and floor, and allows for precise route planning for first responders.

Enhancements:

- Flex-Net FX-4000N 1.2.4 support
- Flex-Net FX-2000N 12.2.30 support
- Standardized Industrial Computers
- Integrate with Legacy Fire Control Panels



[MORE DETAILS](#)



COMMUNICATION & VOICE ENTRY

TX3 SERIES VOICE ENTRY & ACCESS CONTROL



TX3-TOUCH-S22-E TOUCH SCREEN TELEPHONE ACCESS

Mircom's 22" Touch Telephone Access System is designed to provide a visually stunning and intuitive user-experience.

Features:

- 22" full color touch display provides ultra-wide viewing angles, sure to impress visitors and occupants alike
- 2000 name capacity
- TCP/IP capability to remotely program & maintain the system
- Built-in HD web camera for video communication to the suite
- Built-in Wiegand proximity reader; 125 kHz
- Optional high-definition AXIS IP Camera
- Provision for postal lock
- Wheelchair Accessible – Lowered control keys make the keyboard easier to reach, complying with ADA requirements



[MORE DETAILS](#)

TX3 TOUCH SOFTWARE - VERSION 2.13.11

The TX3 Touch software version 2.13.11 is updated to support “-256 no IP” lobby board that is installed inside the TX3 Touch unit.

The latest TX3 Touch software version 2.13.11 is compatible with the following TX3 Touch Panels:

- TX3-TOUCH-S15B-WR
- TX3-TOUCH-S15S-WR
- TX3-TOUCH-F22-E
- TX3-TOUCH-S22-E
- TX3-TOUCH-F15-D
- TX3-TOUCH-S15-D

Enhancements:

- Added Network Firmware upgrade support for “-256 no IP” lobby board that is installed inside the TX3 Touch unit.

[MORE DETAILS](#)



COMMUNICATION & VOICE ENTRY

TX3-PL-ENCL POSTAL LOCK ENCLOSURE

TX3 Postal Lock Enclosure permits the postal worker to use their key to enter the building when used with a Post Office supplied postal lock.

TX3-PL-ENCL mainly serves as an outdoor model, compatible with TX3 Touch Panels, TX3 Nano and TX3 Telephone Entry Panels.

Features:

- A built-in rain hood, piano hinges at the bottom of the door and has provisions for a postal lock to be installed
- Constructed of a heavy gauge stainless steel
- Built for both outdoor and indoor applications



[MORE DETAILS](#)

3012E ELEVATOR RESTRICTION RELAY CARD

The 3012E Elevator Restriction Relay Card plugs into the Backplane portion of the TX3-ER-8-B Elevator Restriction Unit.

A total of eight 3012E Elevator Restriction Relay Cards mount into each TX3-ER-8-B Unit for a total of 96 elevator restriction relays. Each relay is assigned to a specific floor selection button.

Each relay can be configured as Normally Closed or Normally Open. By default, the relays are normally open. In addition, each relay can be configured individually for AC or DC operation. By default, the relays are configured for DC.

Enhancements:

- The new 3012E model has a higher relay contact rating and it has the capability to be wired to both AC and DC circuits.
- Each 3012E has 12 Form C relay contacts with the following ratings:
 - 220 VDC @ 0.24 A
 - 250 VAC @ 0.25 A
 - 30 VDC @ 2 A



[MORE DETAILS](#)



COMMUNICATION & VOICE ENTRY

TX3 PRODUCTS WITH -256 SUFFIX

Due to the pandemic, the global supply chain has been impacted in ways not experienced by the world in the past. Essential raw materials are difficult to obtain and there is a pronounced shortage of workers in manufacturing centers and logistic companies. The impacts we face include slow, postponed and short deliveries from supply partners.

One part that has been a particularly difficult sourcing challenge for Mircom is a critical microchip used in a number of our TX3 products. As a result, affected items (Old Model Numbers) have been placed on temporary hold for indeterminate period.

The alternative part numbers with -256 suffix (New Model Numbers) are available for ordering. Please refer the Product Update Bulletin and Manual for more info.

[MORE DETAILS](#)

TX3-CONFIGURATOR - VERSION 2.13.11

TX3 Configuration and Monitoring Utility is a powerful configuration and monitoring tool for both TX3 series Voice Entry and Card Access systems.

Features:

- Multiple control panels in the same job file
- Both Voice Entry and Access Control database in the same job file
- Auto backup
- Free upgrades
- English and French language support

Enhancements:

- Added support for "-256 no IP" panels
- Added support for external IP Gateway unit



[MORE DETAILS](#)



SMART BUILDINGS

BUILDING AUTOMATION SOFTWARE SYSTEM DESIGN STUDIO - VERSION 1.3.0

The System Design Studio is a powerful Windows based configuration tool for OpenBAS controllers.

Features:

- Ability to configure every aspect of an OpenBAS system including Communication settings, PLC logic, Schedules and Trends
- The PLC logic can be configured with both a drag and drop, ladder logic style interface as well as an English based scripting language
- Works with the OpenBAS building automation systems to provide more: Control, Value and Efficiency

Enhancements:

- Save time and view live values directly in the logic tab
- Improve your workflow with offline logic editing and upload all your changes at once
- Newly added debug point feature (break point feature)
- Optimize your fieldbus with newly added Fieldbus Statistics window
- Added standalone OPENBAS-NWK-ETH3 support including the logic tab (ladder editor)
- Script compiler improvements:
 - New Declare keyword preventing point names from saving on the controller
 - New Online keyword for remote point status detection
- FX-3500 and Flex-Net printer protocol support on OPENBAS-NWK-ETH3



[MORE DETAILS](#)



SMART BUILDINGS

SYSTEM MANAGEMENT STUDIO - NIAGARA 4.10U4

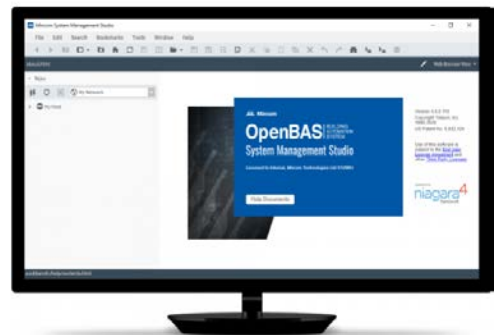
The System Management Studio (Powered by Niagara framework) is an industry standard Building Management System framework that enables facility managers to manage their buildings at an enterprise level.

Features:

- Allows multiple gateways, controllers and 3rd party IP based field controllers to be networked together using common protocols such as BACnet/IP and MODBUS TCP
- Comes with a powerful dashboard and graphic design tools and serves them through any web browser which gives the ability to quickly respond to issues & optimize their systems
- System analytics, advanced trending and alarms & advanced scheduling

Enhancements:

- Windows 11 support is now available
- System Database Support for Tag-based Px which dramatically decreases the amount of time to integrate remote Niagara Network stations into a Supervisor.
- Improved Graphics Performance on the JACE to achieve faster graphics load time and enable instantaneous feedback on changing values
- HTML-5 Tag Manager provides features such as bulk tagging via a browser, context sensitive tagging, seamlessly viewing direct and implied tags, exporting all tags to a spreadsheet for templating and ongoing management, drag-n-drop functionality, and more!



[MORE DETAILS](#)